

BTN

BUSINESS TRAVEL NEWS March 26, 2018



2018 CORPORATE TRAVEL INDEX

BUSINESS TRAVEL PER DIEMS FOR 200 CITIES WORLDWIDE



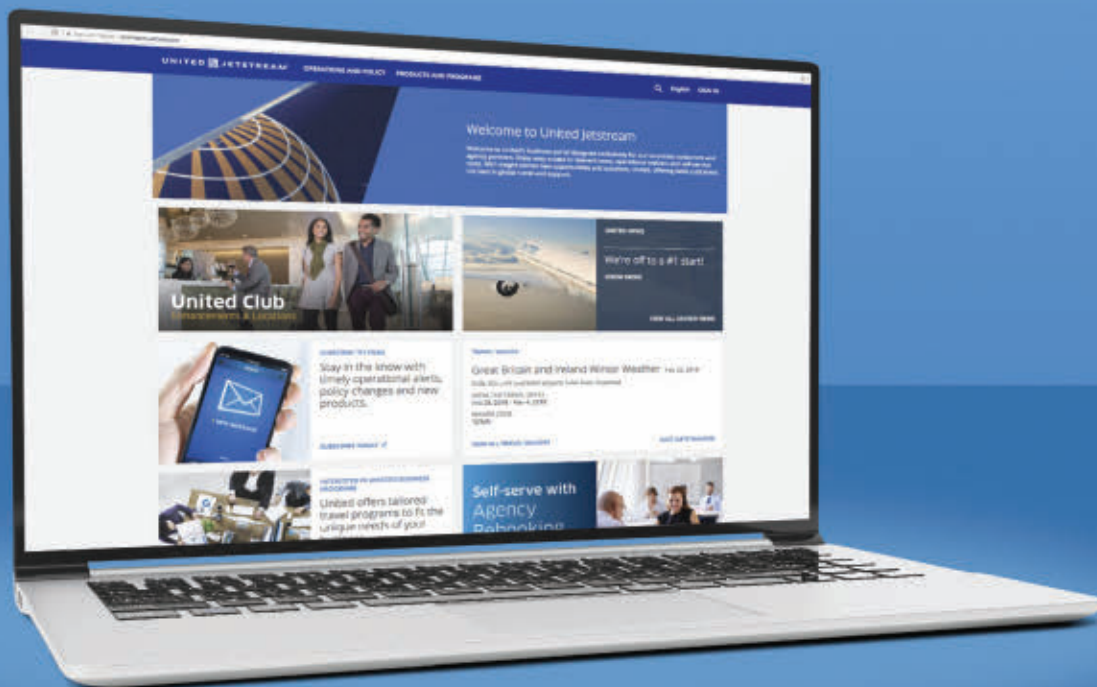
Sponsored in part by



A STAR ALLIANCE MEMBER

1-800-THIS-WOULD- BE-FASTER-ONLINE- AND-YOU-KNOW-IT.

With United Jetstream, you can manage traveler amenities like United ClubSM and MileagePlus[®] Premier[®] memberships directly from your computer. So you don't need to pick up the phone, unless you really miss the sound of our voice. See for yourself at jetstream.united.com.



UNITED  JETSTREAMTM

2018 CORPORATE TRAVEL INDEX

ANALYSIS

Editor's Note **4** • U.S. **5** • Americas **6** • Asia/Pacific **8** • EMEA **10**



U.S. PER DIEMS

Ranked **12** • Alphabetized **14** • Hotel Cost Breakdown **18**
Car Rental Cost Breakdown **20** • Food Cost Breakdown **24**



NON-U.S. PER DIEMS

Ranked **26** • Alphabetized **28** • Food Cost Breakdown **30**

Business Travel News (USPS 0728-870, ISSN 8750-3670) March 26, 2018 Issue 833 Vol. 35, No. 4. Business Travel News is published monthly except semi-monthly in March, April, May, August, September and October by Northstar Travel Media, LLC, 100 Lighting Way, Secaucus, NJ 07094 (201) 902-2000, and is distributed free of charge to qualified corporate travel buyers and travel agents specializing in business travel in the United States and Canada. The cost of a print subscription to non-qualified subscribers is \$129 in the U.S.; \$142 in Canada and Mexico; and \$210 in other foreign locations; the cost of a digital edition subscription is \$65; payable in advance in U.S. dollars. Registered for GST as Northstar Travel Media USA GST No. 264513185. Canadian GST #123397457. Periodicals postage paid at Newark, NJ, and additional mailing offices. Business Travel News is a trademark owned exclusively by Northstar Travel Media. Copyright © 2018 by Northstar Travel Media, LLC. Reproduction of this magazine, in whole or in part, is prohibited unless authorized by the publisher. Editorial and advertising offices: 100 Lighting Way, Secaucus, NJ 07094. For all circulation inquiries, including new subscriptions, renewals, cancellations, changes of address and problems with missed deliveries, contact customer service by mail at Business Travel News, P.O. Box 47655, Plymouth, MN 55447; by phone at (800) 869-6882; fax at (866) 658-6156; e-mail at btn@kmgroup.com; or www.business-travelnews.com/subscribe. POSTMASTER: Send change of address to Business Travel News, P.O. Box 47655, Plymouth, MN 55447. Printed in the USA.

UNITED 

A STAR ALLIANCE MEMBER 



To our Valued Business Partners,

Welcome to the 2018 Corporate Travel Index. We are proud to partner with Business Travel News to deliver this invaluable resource. This promises to be a great year, but success is carried on the back of hard work and planning. With the Corporate Travel Index, your budgeting and forecasting just got a lot easier.

In 2018 we will be delivering an array of business traveler friendly upgrades and changes, all designed around your feedback and with the intent of rewarding you for partnering with us. Continued network expansion means there's a United aircraft landing pretty much anywhere your business takes you, worldwide. We announced United Premium Plus, a new international premium economy product that will launch later this year. We know this cabin class fits well into many corporate travel policies. All of this sits against a backdrop of continued record operational performance.

We're very happy with how well the corporate travel community has adopted United Jetstream, and look forward to you taking control of your United business with this fabulous tool in 2018. We've got enhancements in store to drive even more value for you this year. It's also worth noting that with the introduction of United PassPlus Exec, we now have a program available for all types of corporate partners, big and small alike.

Thank you again for your support and business, and we wish you the best for 2018.

Sincerely,

Dave Hilfman
Senior Vice President-Worldwide Sales
United Airlines

2018 Business Travel Costs

Welcome to Business Travel News' 2018 Corporate Travel Index. BTN worked with BCD Travel and New York University School of Professional Studies Jonathan M. Tisch Center for Hospitality and Tourism to produce this review of business travel per-diem costs for 100 cities in the U.S. and 100 cities elsewhere around the globe. BCD Travel provided average daily hotel rates for each city in the index, as well as car rental rates for each U.S. city, based on actual corporate travel bookings. For capturing average meal costs for all 200 cities, as well as taxi costs for the 100 cities outside the U.S., BTN would like to credit the following NYU Tisch Center students as 2018 Corporate Travel Index research assistants: Camille Ake, Grace Chen, Juliana Coelho, Kaitlyn Dalrymple, Shirley Lu and Michelle Ming.

The Corporate Travel Index remains one of BTN's most requested and downloaded resources at www.businesstravelnews.com. As a result, we are upgrading how we present this information online and will launch an interactive tool in April that will enable users to choose the cities they would like to view and drill down into more of the specific data that makes up our index. For example, if a travel program uses midscale and upscale hotels only, travel managers will be able to calculate per diems that include those hotel categories only or to make other specific choices that will make the data more relevant to their individual programs. The Corporate Travel Index online tool also will allow users to export custom grids and year-over-year trend charts to inform their programs and reports.

Our annual print issue offers the best overview of all the data, and here, BTN editors dig into regional analysis that not only gives insights into the costs associated with actual corporate bookings in 2017 but also looks ahead to the market dynamics and trends that are influencing costs as we move further into 2018.

Starting with the 2018 Corporate Travel Index issue, we've eliminated the opaque "miscellaneous" category for cities outside the U.S. and included a simpler taxi cost from the airport to city center. Unbundling and simplifying the data will allow for clearer comparisons in the future and also will allow more drill-down detail for the online tool. We hope you like the change, and we look forward to offering the BTN Corporate Travel Index analysis tool in the coming weeks.



Enjoy this issue,

Editor-in-Chief, The BTN Group

Demand Drives U.S. Hotels

San Jose, Calif.



The average cost of a hotel room in the U.S., including taxes and fees, rose from \$177.36 in 2016 to \$180.12 in 2017. Perennial gateway cities topped the chart. New York's average daily rate was \$392.95, followed by San Francisco at \$387.20, Boston at \$344.49 and Washington, D.C., at \$325.30.

Biggest Movers by Hotel Costs

The biggest jumps in hotel costs came in cities near Silicon Valley, and travel managers can expect rates in these cities to keep rising as Google, LinkedIn and Facebook build new campuses and buildings. "The market is so compressed that it's even difficult to get your negotiated rate," said Carlson Wagonlit Travel director of hotel solutions Eric Jongeling. He added that his clients search for cheaper hotel options in nearby Oakland and San Jose. Oakland's average hotel room rates rose 8.5 percent to \$242.42,

and San Jose's rose 6.5 percent to \$278.75. Travel and Transport partner solutions group VP Erik Shor saw the same "spillover" city trend. "It's so expensive in San Francisco [that] when demand rises, places like San Jose ride the high tide," he said.

The Pacific Northwest is seeing similar drivers for its rising hotel costs. ADR in Seattle rose 6.3 percent to \$269.29, thanks to the expansion of big companies like Amazon and Microsoft. "There are so many big corporations there experiencing so much growth. It really puts stress on the hotel inventory [and] creates a high rate-growth potential," said Jongeling.

In the middle of the country, Nashville's hot convention market drove average hotel rates up 5.2 percent to \$221.97. "[Hotels are] taking advantage of the [convention travel] demand and pushing transient corporate rates up, as well," said Shor.

Not all the biggest movers went higher. Minneapolis hotel rates fell 5.9 percent to \$200.81. BCD Travel VP of global hotel strategy Marwan Batrouni attributed the decrease to oversupply, even during the time leading up to the Super Bowl this past February. "The demand has not gone up with the supply, [so] hoteliers were not able to command higher rates moving into negotiations," said Batrouni.

According to BCD's data, which informs the Corporate Travel Index, New York saw the biggest dollar increase among gateway cities, while CWT's Jongeling saw a decrease and Travel and Transport's Shor saw a slight increase. However, all three said the market has cooled from previous years. Batrouni forecasts flat growth heading into 2018.

Jongeling said more midscale and lower-upscale hotels have entered New York. "In years past,

it was all upper-upscale, and I think it really has put pressure on the ADRs of those higher-tier properties to compete for business," he said. Airbnb also may figure into the New York story. Batrouni said availability issues drove some of BCD's corporate clients to the sharing economy. However, Jongeling and Shor both said they saw little impact, if any, from Airbnb.

Macro Trends

Jongeling said the gateway cities could be negatively impacted by declining inbound international travel due to the political environment in the U.S. Jongeling also said the markets that big companies like Amazon pick for additional headquarters locations could change hotel rates overnight. So keep a close eye on Atlanta; Austin; Boston; Chicago; Columbus, Ohio; Dallas; Denver; the D.C. region; Indianapolis; Los Angeles; Miami; Nashville; New York/Newark; Philadelphia; Pittsburgh; and Toronto. All are cities in the running for that Amazon windfall.

Travel management company executives who talked to BTN called Atlanta a market to watch, regardless of Amazon's decisions. Other companies are expanding into the city, and Batrouni, for one, forecasts that hotels will increase their corporate negotiated rates significantly this year.

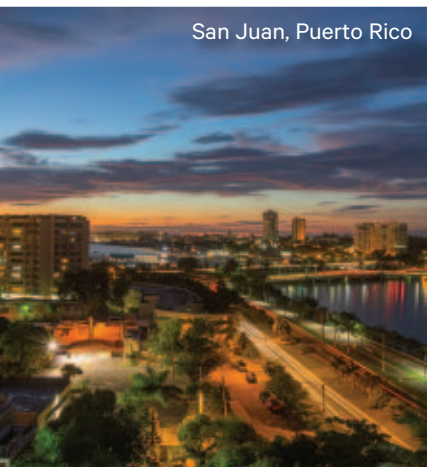
None of the consultants expect business travel demand for hotel rooms to diminish anytime soon. This aligns with the U.S. Travel Association's outlook for business travel, which predicts the number of domestic business trips will rise to 473 million in 2018, up 9.1 million from its estimate for 2017. Moral of the story: Don't expect prices to go down, and sharpen your negotiating pencils. ■

HIGHEST PER DIEMS

- 1 New York
\$609.80
- 2 San Francisco
\$567.53
- 3 Boston
\$515.41
- 4 Washington, D.C.
\$465.22
- 5 Seattle
\$447.62

Per Diems in the Americas Settle Down

San Juan, Puerto Rico



Despite another year of political turbulence in sections of Central and South America and natural disaster in the Caribbean, 2017 demand and per diems in most Latin American cities in the Corporate Travel Index were reasonably steady compared with 2016. Costs for business travel to Canada, meanwhile, increased notably, fueled by economic growth and global travel demand.

However, the most expensive non-U.S. city in the Americas for 2017 daily business travel wasn't in Canada or South America. That distinction belongs to San Juan, Puerto Rico, where the nightly cost of an upscale property, three meals and a taxi from the airport to the city center totaled \$297.89. Using just hotel and food costs for a consistent comparison, San Juan's per diem increased almost 5 percent year over year.

Hurricane Maria, the powerful storm that inundated Puerto Rico in September, killed dozens and wrecked infrastructure islandwide. While San Juan proper suffered

less devastation than other parts of Puerto Rico, increased occupancy owing to citizens with destroyed homes and emergency workers looking to restore power and rebuild the island likely will drive San Juan's hotel rates up in 2018.

Latin America

The combined average daily expenditure on hotel and food increased year over year by a few percentage points in several Latin America CTI cities, including Lima, Buenos Aires, Sao Paulo, Rio de Janeiro, Mexico City, Guayaquil and Guatemala City. That aligns with travel management consultancy Advito's contention in its 2018 Industry Forecast that "hotel bookings are slowly returning" to many locations in the region. Both Advito and the CTI excludes Caracas, Venezuela, as continued political and economic instability has limited business travel there.

Looking forward, Advito noted that Brazilian hotel development may outpace demand growth: "Supply is increasing as hotel developments commissioned during the boom years at the beginning of the decade finally open. The increase in rooms is dampening price [increases], mainly in Brazil," according to Advito. "There is more supply due in Brazil, especially in Sao Paulo." Lodging research firm STR, meanwhile, predicts that Sao Paulo hotel rates will rise both this year and next.

Hotel costs in Costa Rica's San Jose remained steady from 2016 to 2017, but a hotel survey by the Costa Rican Hotels Chamber noted a drop in tourists from the U.S. that may drive the lower occupancy, according to The Costa Rica Star.

HIGHEST PER DIEMS

- 1 San Juan, Puerto Rico
\$297.89
- 2 Vancouver
\$291.46
- 3 Toronto
\$290.89
- 4 Lima, Peru
\$287.39
- 5 Buenos Aires, Argentina
\$266.26

Canada

It's a much different story north of the U.S. Combined hotel and food costs increased at least 4 percent year over year in four of the five Canadian CTI cities. Calgary was the exception, as per diems increased a bit less than 2 percent.

STR noted that hotel occupancy, average daily rate and revenue per available room in Canada all increased year over year in 2017, helped by limited supply growth and strong demand. Advito noted strong economic growth in the country and increased demand for travel throughout the world, noting the rapid global expansion of Air Canada's network. Air Canada, in fact, added 30 routes and increased capacity by 11.6 percent from 2016 to 2017. Advito, though suggested that "Air Canada itself faces increased international competition

Combined hotel and food costs increased at least 4 percent year over year in four of the five Canadian cities on the Corporate Travel Index. According to STR, hotel occupancy, average daily rate and revenue per available room all increased in 2017.

from WestJet" that will help "limit domestic fare increases in 2018 to 1 percent."

As for hotels in Canada, "a steady increase in openings will limit the pace of [hotel] rate increase to 2 percent to 4 percent in 2018," according to Advito. ■

United Airlines

Every day we have the privilege of helping unite the world by connecting people to the moments that matter most—and we know that getting your travelers where they need to be safely, comfortably and on time is of paramount importance. In 2017 we were honored to fly more than 148 million customers while achieving the most on-time departures and the fewest cancellations in our history.

In addition to maintaining our commitment to delivering best-in-class operational performance, 2018 will be an exciting year for our corporate partners as we invest in our industry-leading travel technology, grow our unsurpassed global network and reinforce your purchasing decisions every day with the best business travel experience on offer.

Leading the Way in Travel Technology

We know that top-notch technology creates a more convenient travel experience, whether that's on the ground, in the air or travel management. United Jetstream allows you to take control with self-serve traveler amenities, including waivers, on-demand dynamic reporting on metrics such as ancillary spend, and more. Start saving time immediately, with online transactions typically taking less than 30 seconds to complete.

On board our aircraft, we're adding free personal device entertainment to all flights equipped with DIRECTV®—meaning all flights with at least 70 seats will have at least one free entertainment option. We're increasing the bandwidth of our United Wi-Fi and enabling more seamless transitions between satellites, mitigating gaps in coverage and connection drops.



Per Diems Rise in Asia/Pac

Beijing



Combined hotel and food costs rose in 18 of the 22 Asia/Pacific cities in the Corporate Travel Index, while they decreased in Bangkok; Jakarta, Indonesia; and Tianjin, China. Tokyo once again topped the list of non-U.S. cities with the highest per diem. This year's issue tracks a night's stay in an upscale hotel room, three meals and the cost of a taxi from the airport to the city center. That added up to \$579.63 for Tokyo, which tied Auckland, New Zealand, for the largest year-over-year hotel rate increase among Asia/Pac cities on the CTI, at 4.7 percent.

China

China's 2017 year-over-year GDP growth of 6.9 percent surpassed analysts' expectations, but the country's economy has yet to climb back to the peak it reached in 2010, when GDP spiked 12 percent. In the Asia/Pacific region, China's slowdown has offset India's strong economy, according to BCD travel research consultancy Advito's 2018 Industry Forecast, but individual markets are the key.

The average daily rate for

an upscale hotel decreased in four of the five Chinese cities on the CTI. Shanghai dropped 6.2 percent, Shenzhen 4.8 percent, Tianjin 2.6 percent and Guangzhou 2.5 percent. In Beijing, however, ADR increased 2.8 percent. "Five-star properties in very good locations or with excellent local reputations continue to command high prices," according to Advito. Hotel companies continued to open properties throughout 2017, outpacing demand, the consultancy noted. "Demand will catch up with supply in the next few years, but for now, rate increases have slowed a little in China."

Food costs rose throughout China, in some cases dramatically. Three meals in Guangzhou cost 32.4 percent more in 2017 than in 2016, while the cost increased 23 percent in Shanghai, 16.7 percent in Shenzhen and 4 percent in Beijing. Hong Kong also increased 5 percent. Tianjin was the only Chinese city on the CTI in which food costs dropped, in this case by 7.2 percent.

Advito expects hotel rates in China to increase by between 2 percent and 4 percent in 2018. "There is still enough new demand from both business and leisure

travelers to keep rates moving upwards," according to Advito's report. Likewise, Carlson Wagonlit Travel Asia/Pacific director Richard Johnson expects China and India to have the largest ADR growth in 2018.

ADR in Hong Kong, meanwhile, decreased a modest 0.3 percent from 2016 to 2017, according to the CTI. Advito attributed the relatively flat ADR to weak demand.

India

"India's economy remains the healthiest of the major emerging Asia/Pacific markets with robust growth anticipated given pro-market economic reforms," according to CWT's Global Travel Forecast for 2018. While the country offers plenty of lower-priced properties, there are fewer high-end, branded hotels, which business travelers prefer, according to Advito. The country's "critical shortage" of hotel rooms—supply was only two-thirds of demand—drove hotel rates up in 2017, Advito noted. Bangalore, meanwhile, had a "massive increase in new hotels," which Advito said relieved rate pressure.

According to the CTI, Bangalore ADR increased only 2.5 percent from 2016 to 2017, while hotel prices were stagnant in Mumbai, declining a minimal 0.2 percent and in New Delhi, where they dipped 0.3 percent.

As in China, meals contributed significantly to India's business travel costs, rising 18.6 percent in Mumbai, 10.8 percent in Bangalore and 7.2 percent in New Delhi.

Australia & New Zealand

Costs rose across Australia and New Zealand, led by Sydney, where combined food and hotel costs rose 7.2 percent. Hotel rates in

HIGHEST PER DIEMS

- 1 Tokyo
\$579.63
- 2 Hong Kong
\$423.47
- 3 Seoul
\$393.72
- 4 Sydney
\$390.30
- 5 Osaka-Kobe
\$371.70

Even as Hotel Rates Drop

Sydney rose 4.3 percent year over year, according to the CTI, lining up with the view of CWT's Johnson, who said, "We've heard of Sydney as an incredibly capacity-strained city in the past year."

Melbourne combined food and hotel costs rose 5.7 percent from 2016 to 2017 and 2.1 percent in New Zealand's capital city of Auckland. Johnson said tourism is driving Auckland's hotel rate. A 4.1 percent decrease in food costs mitigated business travel costs in Auckland, while food costs surged in Australia, by

18.7 percent in Melbourne and 13.6 percent in Sydney.

Other Markets to Note

For Osaka-Kobe, combined hotel and food costs increased by 5.3 percent from 2016 to 2017. A 9 percent increase in food costs helped, while a 3.6 percent increase in ADR also contributed. "Osaka is surprising, as they have increased rooms in anticipation of the 2020 Olympics but demand isn't expected to kick in until next year," Johnson said.

Combined hotel and food costs

in Jakarta dropped dramatically from 2016 to 2017, by 13.6 percent, thanks to a 9.3 percent drop in ADR and a 21.9 percent decrease in food costs. Indonesia, however, is sensitive to oil demand and pricing trends, Johnson said, and he expects ADR to rise as oil prices recover in 2018.

Singapore's ADR dropped 6.1 percent, according to the CTI. "Singapore [hotel] demand hasn't grown at the same pace as capacity," Johnson said. "Although [it's] a high-occupancy market, supply levels are also high, keeping prices soft." ■

How far will you go for itinerary-level data?

You shouldn't have to search far and wide for information that helps you do your job. Our corporate travel payment programs provide itinerary-level data for greater accuracy and detail. And our reporting tools help you keep costs in line. Better travel management starts with UATP. [Learn more at UATP.com](http://UATP.com).

UATP

The new power of payment



European Biz Travel Spending Will Rise



Muscat, Oman

Buoyed by some of the strongest demand and highest occupancy seen in continental Europe in years, as well as a strengthening euro and British pound against the U.S. dollar, the daily cost of travel increased year over year in most of Europe's Corporate Travel Index markets. Spending levels and forecasts are far less consistent in Africa and the Middle East. In the latter, a supply boom continues to outpace demand.

For the 59 cities that comprise EMEA in this edition of the CTI, the average 2017 daily cost of an upscale hotel room, three meals and a taxi from the airport to the city center is \$326.72 in. Last year's CTI doesn't represent an apples-to-apples comparison, as BTN replaced a melange of miscellaneous trip costs with the simpler taxi ride. Daily combined hotel and food costs, however, show a year-over-year increase of slightly less than 5 percent.

In fact, despite seeing nearly a 7 percent increase in its daily hotel and food total, Zurich, which was last year's highest-ranking EMEA city for travel costs, has been dethroned this year by the Omani capital of Muscat, where the 2017 daily business travel cost was

\$521.36. Don't be fooled, though: Muscat's lofty perch atop the CTI EMEA ranking is a function of its taxi costs. Only in Tokyo does it require more to travel from the airport to the city center than Muscat's \$191.

In fact, Muscat's 2017 daily hotel and food costs declined more than 6 percent from 2016, a common theme among cities in the Middle East. Excluding the taxi, travel per diems dropped year over year by 1.5 percent in Kuwait City, nearly 4 percent in Riyadh, more than 2 percent in Abu Dhabi, more than 3 percent in Dubai and almost 18 percent in Doha. In many of these cases, the culprit remains a significant influx of hotel supply paired with a depressed global market for oil prices. Due largely to these trends, BCD travel management consultancy Advito projects continued general softness in travel costs in the Middle East in 2018.

Europe

A far different story occurred in Europe. Combined hotel and meal prices increased by at least 10 percent from 2016 to 2017 in 15 European cities. In Prague, Warsaw, Stuttgart, Lisbon, Madrid and Rome, the increases were at least 15 percent.

One key cause is strong hotel demand throughout the continent. Occupancy rates in Europe in 2017 reached levels not seen since the early 2000s, according to lodging consultancy MKG Consulting. A second factor was the increasing strength of the euro versus the U.S. dollar and the British pound in 2017. CTI hotel rates are converted from local currency to U.S. dollars

using the conversion rate on the date each hotel invoice was paid; food costs, meanwhile, are based on a Dec. 2, conversion rate, so there is no single date to assess for conversion rates. Deutsche Bank analysts expect the euro to strengthen further against the dollar in each 2018, 2019 and 2020.

The weakness of the pound against the euro and the dollar is one reason British cities showed a year-over-year decline in business travel costs in the Corporate Travel Index. Combined hotel and food costs dropped 2.7 percent in London; almost 5 percent in Manchester, also the site of a 2017 terror attack; and under 1 percent in each Birmingham and Glasgow. Edinburgh increased about 2 percent.

Africa

Africa continues to be a mixed bag in terms of daily business travel spend. Combined hotel and food costs dropped by more than 20 percent in Lagos, the second straight major drop for the Nigerian city, and another indicator of a slow global price market. According to lodging research firm STR, "Nigeria's hotel industry continues to be affected by a poor reputation around security concerns in the country."

Still, Advito projects sharply higher hotel rates in 2018, not only in Nigeria but also in areas like South Africa and Egypt, due to "massive pent-up demand for quality accommodations" and an influx of new branded supply. ■

HIGHEST PER DIEMS

- 1 Muscat, Oman
\$521.36
- 2 Zurich
\$506.26
- 3 London
\$493.99
- 4 Geneva
\$436.82
- 5 Oslo
\$431.34

EXCELLENT SERVICE THAT EXTENDS BEYOND THE AIRPLANE



With Turkish Airlines, corporate customers benefit from excellent after-sales service; hence, any queries or questions are dealt with pace and professionalism.

corporatehelpdesk.us@thy.com
+1 713 255 02 88

TURKISH AIRLINES 

CORPORATE CLUB
WHERE BUSINESS MEETS BENEFITS

Rank	City	Hotel	Car Rental	Food	Total
1	New York	\$392.95	\$74.31	\$142.54	\$609.80
2	San Francisco	\$387.20	\$48.78	\$131.55	\$567.53
3	Boston	\$344.49	\$57.30	\$113.62	\$515.41
4	Washington, D.C.	\$325.30	\$41.05	\$98.87	\$465.22
5	Seattle	\$269.29	\$46.87	\$131.46	\$447.62
6	Chicago	\$279.02	\$51.24	\$113.32	\$443.58
7	San Jose, Calif.	\$278.75	\$41.78	\$110.28	\$430.81
8	Santa Barbara, Calif.	\$242.85	\$48.73	\$131.28	\$422.86
9	Los Angeles	\$258.64	\$46.25	\$109.58	\$414.47
10	Honolulu	\$239.32	\$37.13	\$133.79	\$410.24
11	Oakland, Calif.	\$242.42	\$47.78	\$109.77	\$399.97
12	Hartford, Conn.	\$229.37	\$46.42	\$110.97	\$386.76
13	Denver	\$214.64	\$46.14	\$121.54	\$382.32
14	White Plains, N.Y.	\$224.65	\$53.19	\$103.80	\$381.64
15	Philadelphia	\$224.57	\$49.29	\$99.90	\$373.76
16	Portland, Ore.	\$209.80	\$49.72	\$112.41	\$371.93
17	Austin, Texas	\$215.87	\$52.75	\$102.12	\$370.74
18	Nashville	\$221.97	\$44.35	\$100.24	\$366.56
19	New Orleans	\$204.42	\$48.78	\$110.98	\$364.18
20	Minneapolis	\$200.81	\$50.36	\$112.35	\$363.52
21	Miami	\$209.28	\$41.19	\$112.41	\$362.88
22	Rochester, Minn.	\$190.54	\$73.80	\$94.01	\$358.35
23	Baltimore	\$204.48	\$43.96	\$109.50	\$357.94
24	Detroit	\$217.01	\$40.49	\$99.32	\$356.82
25	Houston	\$188.88	\$48.51	\$116.68	\$354.07
26	Charlotte, N.C.	\$201.26	\$46.23	\$105.89	\$353.38
27	Dallas	\$187.93	\$49.14	\$115.98	\$353.05
28	Atlanta	\$197.29	\$48.06	\$106.37	\$351.72
29	San Diego	\$200.60	\$44.21	\$99.73	\$344.54
30	Newark, N.J.	\$202.19	\$58.87	\$83.00	\$344.06
31	Charleston, S.C.	\$191.28	\$43.10	\$106.86	\$341.24
32	Madison, Wis.	\$166.29	\$51.64	\$118.81	\$336.74
33	Cincinnati	\$180.59	\$47.56	\$105.07	\$333.22
34	Fort Lauderdale, Fla.	\$186.08	\$39.54	\$106.54	\$332.16
35	Las Vegas	\$177.90	\$47.20	\$106.56	\$331.66
36	Anaheim, Calif.	\$184.22	\$42.99	\$103.21	\$330.42
37	Providence, R.I.	\$181.90	\$39.07	\$108.66	\$329.63
	Total Average	\$180.12	\$46.51	\$98.09	\$324.72
38	Greenville, S.C.	\$169.91	\$40.93	\$110.14	\$320.98
39	Wilmington, Del.	\$182.44	\$36.68	\$99.23	\$318.35
40	Kansas City, Mo.	\$175.18	\$49.25	\$92.37	\$316.80
41	Pittsburgh	\$174.61	\$45.35	\$96.29	\$316.25
42	Columbus, Ohio	\$167.00	\$49.35	\$99.06	\$315.41
43	St. Louis	\$172.59	\$46.00	\$96.58	\$315.17
44	Cleveland	\$173.42	\$46.64	\$92.82	\$312.88
45	Milwaukee	\$167.14	\$45.24	\$100.28	\$312.66
46	Memphis, Tenn.	\$163.08	\$47.21	\$100.29	\$310.58
47	Tampa, Fla.	\$176.71	\$41.86	\$91.41	\$309.98
48	Omaha, Neb.	\$155.83	\$61.33	\$91.16	\$308.32
49	Sacramento, Calif.	\$162.15	\$41.26	\$103.91	\$307.32
50	Albany, N.Y.	\$164.80	\$46.29	\$95.73	\$306.82

Rank	City	Hotel	Car Rental	Food	Total
51	Birmingham, Ala.	\$154.95	\$55.90	\$95.78	\$306.63
52	Indianapolis	\$169.84	\$48.57	\$87.90	\$306.31
53	Phoenix	\$161.92	\$51.31	\$92.47	\$305.70
54	Buffalo, N.Y.	\$164.45	\$44.49	\$95.87	\$304.81
55	Grand Rapids, Mich.	\$173.16	\$42.57	\$88.52	\$304.25
56	Columbia, S.C.	\$154.29	\$47.91	\$101.52	\$303.72
57	Salt Lake City	\$174.43	\$46.77	\$80.36	\$301.56
58	Charleston, W.V.	\$159.42	\$46.73	\$93.32	\$299.47
59	Orlando	\$158.27	\$39.75	\$100.02	\$298.04
60	Louisville, Ky.	\$170.13	\$44.29	\$82.64	\$297.06
61	Sarasota, Fla.	\$166.16	\$41.53	\$85.83	\$293.52
62	Richmond, Va.	\$164.62	\$42.50	\$86.31	\$293.43
63	San Antonio	\$155.16	\$50.98	\$87.08	\$293.22
64	Des Moines, Iowa	\$163.53	\$47.86	\$81.11	\$292.50
65	Raleigh, N.C.	\$162.15	\$44.56	\$85.73	\$292.44
66	Harrisburg, Pa.	\$154.58	\$46.40	\$91.05	\$292.03
67	Savannah, Ga.	\$160.30	\$40.76	\$87.33	\$288.39
68	Little Rock, Ark.	\$146.83	\$53.50	\$87.45	\$287.78
69	Knoxville, Tenn.	\$149.27	\$41.85	\$94.53	\$285.65
70	Fresno, Calif.	\$147.13	\$42.76	\$95.57	\$285.46
71	Peoria, Ill.	\$141.21	\$46.87	\$96.79	\$284.87
72	Syracuse, N.Y.	\$150.27	\$41.61	\$92.73	\$284.61
73	Spokane, Wash.	\$136.34	\$51.76	\$96.32	\$284.42
74	Oklahoma City, Okla.	\$139.47	\$45.07	\$98.44	\$282.98
75	Greensboro, N.C.	\$148.80	\$44.46	\$88.48	\$281.74
76	Baton Rouge, La.	\$141.03	\$48.83	\$90.91	\$280.77
77	Springfield, Mo.	\$142.81	\$46.36	\$91.04	\$280.21
78	Tallahassee, Fla.	\$148.94	\$43.35	\$86.90	\$279.19
79	Toledo, Ohio	\$154.21	\$45.83	\$79.13	\$279.17
80	Chattanooga, Tenn.	\$146.67	\$45.31	\$86.44	\$278.42
81	Allentown, Pa.	\$147.82	\$40.66	\$89.66	\$278.14
82	Roanoke, Va.	\$133.07	\$50.48	\$93.31	\$276.86
83	El Paso, Texas	\$144.41	\$44.39	\$86.25	\$275.05
84	Fort Wayne, Ind.	\$136.94	\$48.53	\$88.39	\$273.86
85	Akron, Ohio	\$142.79	\$44.18	\$86.53	\$273.50
86	Rochester, N.Y.	\$139.90	\$43.08	\$89.78	\$272.76
87	Jacksonville, Fla.	\$141.69	\$42.14	\$85.71	\$269.54
88	Lexington, Ky.	\$139.14	\$45.83	\$83.00	\$267.97
89	Dayton, Ohio	\$135.91	\$43.68	\$87.73	\$267.32
90	Tulsa, Okla.	\$122.06	\$45.44	\$97.78	\$265.28
91	Mobile, Ala.	\$134.75	\$43.41	\$86.78	\$264.94
92	Jackson, Miss.	\$132.81	\$44.38	\$87.29	\$264.48
93	Wichita, Kan.	\$137.73	\$44.64	\$80.64	\$263.01
94	Tucson, Ariz.	\$126.93	\$47.32	\$88.52	\$262.77
95	Corpus Christi, Texas	\$144.34	\$44.55	\$72.19	\$261.08
96	Albuquerque, N.M.	\$125.51	\$48.10	\$86.53	\$260.14
97	Shreveport, La.	\$118.74	\$42.26	\$91.61	\$252.61
98	Bakersfield, Calif.	\$119.98	\$42.14	\$85.47	\$247.59
99	Norfolk, Va.	\$128.98	\$40.32	\$78.25	\$247.55
100	Biloxi, Miss.	\$118.98	\$40.01	\$87.73	\$246.72

AT CHOICE HOTELS, WE MEAN BUSINESS.

*Cambria® Hotel,
Los Angeles Airport*

*Comfort Suites®,
Houston, TX*

*enVision Hotel, Ascend Hotel
Collection®, Boston, MA*

*Sleep Inn®,
Austin, TX*

Now covering 90% of top U.S. business destinations, our updated and expanded footprint of hotels for business provides experiences that you can feel great about recommending. Plus, we make sure *you're* covered too—with best-in-class, coordinated service and support to help make your program more successful, and your job easier.

VIEW LATEST OPENINGS AT
ChoiceMeansBusiness.com

Rank	City	Hotel	Car Rental	Food	Total
85	Akron, Ohio	\$142.79	\$44.18	\$86.53	\$273.50
50	Albany, N.Y.	\$164.80	\$46.29	\$95.73	\$306.82
96	Albuquerque, N.M.	\$125.51	\$48.10	\$86.53	\$260.14
81	Allentown, Pa.	\$147.82	\$40.66	\$89.66	\$278.14
36	Anaheim, Calif.	\$184.22	\$42.99	\$103.21	\$330.42
28	Atlanta	\$197.29	\$48.06	\$106.37	\$351.72
17	Austin, Texas	\$215.87	\$52.75	\$102.12	\$370.74
98	Bakersfield, Calif.	\$119.98	\$42.14	\$85.47	\$247.59
23	Baltimore	\$204.48	\$43.96	\$109.50	\$357.94
76	Baton Rouge, La.	\$141.03	\$48.83	\$90.91	\$280.77
100	Biloxi, Miss.	\$118.98	\$40.01	\$87.73	\$246.72
51	Birmingham, Ala.	\$154.95	\$55.90	\$95.78	\$306.63
3	Boston	\$344.49	\$57.30	\$113.62	\$515.41
54	Buffalo, N.Y.	\$164.45	\$44.49	\$95.87	\$304.81
31	Charleston, S.C.	\$191.28	\$43.10	\$106.86	\$341.24
58	Charleston, W.V.	\$159.42	\$46.73	\$93.32	\$299.47
26	Charlotte, N.C.	\$201.26	\$46.23	\$105.89	\$353.38
80	Chattanooga, Tenn.	\$146.67	\$45.31	\$86.44	\$278.42
6	Chicago	\$279.02	\$51.24	\$113.32	\$443.58
33	Cincinnati	\$180.59	\$47.56	\$105.07	\$333.22
44	Cleveland	\$173.42	\$46.64	\$92.82	\$312.88
56	Columbia, S.C.	\$154.29	\$47.91	\$101.52	\$303.72
42	Columbus, Ohio	\$167.00	\$49.35	\$99.06	\$315.41
95	Corpus Christi, Texas	\$144.34	\$44.55	\$72.19	\$261.08
27	Dallas	\$187.93	\$49.14	\$115.98	\$353.05
89	Dayton, Ohio	\$135.91	\$43.68	\$87.73	\$267.32
13	Denver	\$214.64	\$46.14	\$121.54	\$382.32
64	Des Moines, Iowa	\$163.53	\$47.86	\$81.11	\$292.50
24	Detroit	\$217.01	\$40.49	\$99.32	\$356.82
83	El Paso, Texas	\$144.41	\$44.39	\$86.25	\$275.05
34	Fort Lauderdale, Fla.	\$186.08	\$39.54	\$106.54	\$332.16
84	Fort Wayne, Ind.	\$136.94	\$48.53	\$88.39	\$273.86
70	Fresno, Calif.	\$147.13	\$42.76	\$95.57	\$285.46
55	Grand Rapids, Mich.	\$173.16	\$42.57	\$88.52	\$304.25
75	Greensboro, N.C.	\$148.80	\$44.46	\$88.48	\$281.74
38	Greenville, S.C.	\$169.91	\$40.93	\$110.14	\$320.98
66	Harrisburg, Pa.	\$154.58	\$46.40	\$91.05	\$292.03
12	Hartford, Conn.	\$229.37	\$46.42	\$110.97	\$386.76
10	Honolulu	\$239.32	\$37.13	\$133.79	\$410.24
25	Houston	\$188.88	\$48.51	\$116.68	\$354.07
52	Indianapolis	\$169.84	\$48.57	\$87.90	\$306.31
92	Jackson, Miss.	\$132.81	\$44.38	\$87.29	\$264.48
87	Jacksonville, Fla.	\$141.69	\$42.14	\$85.71	\$269.54
40	Kansas City, Mo.	\$175.18	\$49.25	\$92.37	\$316.80
69	Knoxville, Tenn.	\$149.27	\$41.85	\$94.53	\$285.65
35	Las Vegas	\$177.90	\$47.20	\$106.56	\$331.66
88	Lexington, Ky.	\$139.14	\$45.83	\$83.00	\$267.97
68	Little Rock, Ark.	\$146.83	\$53.50	\$87.45	\$287.78
9	Los Angeles	\$258.64	\$46.25	\$109.58	\$414.47
60	Louisville, Ky.	\$170.13	\$44.29	\$82.64	\$297.06

Rank	City	Hotel	Car Rental	Food	Total
32	Madison, Wis.	\$166.29	\$51.64	\$118.81	\$336.74
46	Memphis, Tenn.	\$163.08	\$47.21	\$100.29	\$310.58
21	Miami	\$209.28	\$41.19	\$112.41	\$362.88
45	Milwaukee	\$167.14	\$45.24	\$100.28	\$312.66
20	Minneapolis	\$200.81	\$50.36	\$112.35	\$363.52
91	Mobile, Ala.	\$134.75	\$43.41	\$86.78	\$264.94
18	Nashville	\$221.97	\$44.35	\$100.24	\$366.56
19	New Orleans	\$204.42	\$48.78	\$110.98	\$364.18
1	New York	\$392.95	\$74.31	\$142.54	\$609.80
30	Newark, N.J.	\$202.19	\$58.87	\$83.00	\$344.06
99	Norfolk, Va.	\$128.98	\$40.32	\$78.25	\$247.55
11	Oakland, Calif.	\$242.42	\$47.78	\$109.77	\$399.97
74	Oklahoma City, Okla.	\$139.47	\$45.07	\$98.44	\$282.98
48	Omaha, Neb.	\$155.83	\$61.33	\$91.16	\$308.32
59	Orlando	\$158.27	\$39.75	\$100.02	\$298.04
71	Peoria, Ill.	\$141.21	\$46.87	\$96.79	\$284.87
15	Philadelphia	\$224.57	\$49.29	\$99.90	\$373.76
53	Phoenix	\$161.92	\$51.31	\$92.47	\$305.70
41	Pittsburgh	\$174.61	\$45.35	\$96.29	\$316.25
16	Portland, Ore.	\$209.80	\$49.72	\$112.41	\$371.93
37	Providence, R.I.	\$181.90	\$39.07	\$108.66	\$329.63
65	Raleigh, N.C.	\$162.15	\$44.56	\$85.73	\$292.44
62	Richmond, Va.	\$164.62	\$42.50	\$86.31	\$293.43
82	Roanoke, Va.	\$133.07	\$50.48	\$93.31	\$276.86
22	Rochester, Minn.	\$190.54	\$73.80	\$94.01	\$358.35
86	Rochester, N.Y.	\$139.90	\$43.08	\$89.78	\$272.76
49	Sacramento, Calif.	\$162.15	\$41.26	\$103.91	\$307.32
57	Salt Lake City	\$174.43	\$46.77	\$80.36	\$301.56
63	San Antonio	\$155.16	\$50.98	\$87.08	\$293.22
29	San Diego	\$200.60	\$44.21	\$99.73	\$344.54
2	San Francisco	\$387.20	\$48.78	\$131.55	\$567.53
7	San Jose, Calif.	\$278.75	\$41.78	\$110.28	\$430.81
8	Santa Barbara, Calif.	\$242.85	\$48.73	\$131.28	\$422.86
61	Sarasota, Fla.	\$166.16	\$41.53	\$85.83	\$293.52
67	Savannah, Ga.	\$160.30	\$40.76	\$87.33	\$288.39
5	Seattle	\$269.29	\$46.87	\$131.46	\$447.62
97	Shreveport, La.	\$118.74	\$42.26	\$91.61	\$252.61
73	Spokane, Wash.	\$136.34	\$51.76	\$96.32	\$284.42
77	Springfield, Mo.	\$142.81	\$46.36	\$91.04	\$280.21
43	St. Louis	\$172.59	\$46.00	\$96.58	\$315.17
72	Syracuse, N.Y.	\$150.27	\$41.61	\$92.73	\$284.61
78	Tallahassee, Fla.	\$148.94	\$43.35	\$86.90	\$279.19
47	Tampa, Fla.	\$176.71	\$41.86	\$91.41	\$309.98
79	Toledo, Ohio	\$154.21	\$45.83	\$79.13	\$279.17
94	Tucson, Ariz.	\$126.93	\$47.32	\$88.52	\$262.77
90	Tulsa, Okla.	\$122.06	\$45.44	\$97.78	\$265.28
4	Washington, D.C.	\$325.30	\$41.05	\$98.87	\$465.22
14	White Plains, N.Y.	\$224.65	\$53.19	\$103.80	\$381.64
93	Wichita, Kan.	\$137.73	\$44.64	\$80.64	\$263.01
39	Wilmington, Del.	\$182.44	\$36.68	\$99.23	\$318.35

DESTINATION NEXT IS ORCHESTRATING MEETING TRAVEL WITHOUT THE HASSLE.

**Delta Edge Meetings makes it easy to save time, save money
and report the value.**

Delta Edge Meetings automatically integrates with your existing Corporate Sales Agreement, ensuring your meeting travel counts towards contract fulfillment while providing you instant access to pricing that best benefits your company.

To learn more, talk to your Delta Sales Account Executive
or visit PRO.DELTA.COM.



 DELTA
EDGE™

Delta Edge is available to customers with a valid Corporate Sales Agreement. Terms and exclusions apply to Delta Edge benefits. Full terms and exclusions are available from your Corporate Sales Account representative. Corporate Priority benefits may be limited to select flights or fare classes.

SAVE THE DATE



for the advancement of business travel

[OCTOBER 29-30, 2018]

NEW YORK HILTON MIDTOWN, NEW YORK CITY

Join ***Business Travel News*** and ***Travel Procurement***
for the only industry event that combines...

- * Cutting-edge buyer education
- * Technology innovators and influencers
- * Networking with 400 of your business travel peers

MASTER CLASSES

Education sessions presented by senior BTN Group executives and panels of experts assembled to explain cutting-edge topics that savvy business travel buyers are not yet well-versed on, but ought to be.

THINK TANKS

Tackle four tough industry issues via small group workshops and in-depth discussions that activate industry progress.

BUSINESS TRAVEL INNOVATOR LAB

When Innovators compete, the industry wins

See new technologies poised to change the business travel industry. Top executives present cutting-edge products, technologies and services that are critiqued, judged and voted on by both a panel of expert judges and those in attendance.

www.btngroupconferences.com/innovate

Oct 2018

Su	Mo	Tu	We	Th	Fr	Sa
	1	2	3	4	5	6
7	8	9	10	11	12	13
14	15	16	17	18	19	20
21	22	23	24	25	26	27
28	29	30	31			

HEAR WHAT PAST ATTENDEES HAVE SAID

BTN Innovate 2017 provided a new lens to see the entire ecosystem of corporate travel. Access to great minds with years of experience in one room = priceless. Worth every second of time of out of the office.

- Ariel Crohn, Corporate Meeting & Travel Manager, Coverys

BTN Innovate never fails to deliver insightful content best practices about what really matters in our industry

- Martha Ferguson, SVP, Global Travel Manager, Lazard Freres

BTN Innovate 2017 was simply fantastic! Great presenters and amazing new ideas/apps/innovations. Even better than the year prior! GREAT JOB BTN and THANK YOU!"

- Anna C. Bramante, Director Travel & Fleet, The Travelers Companies, inc.



SpotHero for Business Co-Founder Becca Rabinowitz, who took home 2017's Business Travel Innovator Award



DVI's President Brian Beard, who took home 2017's People's Choice Business Travel Innovator Award

U.S. HOTEL COST BREAKDOWN

Rank	City	Upper-Upscale ADR	Upscale ADR	Midscale ADR	Average ADR, Including Luxury & Economy	Sales Tax, Occupancy Tax & Surcharges	Total
1	New York	\$322.87	\$335.91	\$288.50	\$330.47	\$62.48	\$392.95
2	San Francisco	\$332.98	\$315.19	\$247.91	\$332.50	\$54.70	\$387.20
3	Boston	\$299.42	\$300.50	\$265.08	\$302.85	\$41.64	\$344.49
4	Washington, D.C.	\$286.00	\$250.30	\$236.83	\$283.36	\$41.94	\$325.30
5	Chicago	\$240.60	\$220.90	\$194.78	\$237.67	\$41.35	\$279.02
6	San Jose, Calif.	\$274.95	\$245.03	\$212.58	\$244.52	\$34.23	\$278.75
7	Seattle	\$240.47	\$216.30	\$176.72	\$231.22	\$38.07	\$269.29
8	Los Angeles	\$207.63	\$252.41	\$172.62	\$224.52	\$34.12	\$258.64
9	Santa Barbara, Calif.	\$220.36	\$199.21	\$174.89	\$214.60	\$28.25	\$242.85
10	Oakland, Calif.	\$233.53	\$199.32	\$163.62	\$210.96	\$31.46	\$242.42
11	Honolulu	\$211.29	\$182.04	\$180.68	\$208.17	\$31.15	\$239.32
12	Hartford, Conn.	\$211.73	\$185.01	\$177.57	\$199.45	\$29.92	\$229.37
13	White Plains, N.Y.	\$191.99	\$188.37	N/A	\$198.15	\$26.50	\$224.65
14	Philadelphia	\$195.02	\$189.31	\$166.35	\$193.18	\$31.39	\$224.57
15	Nashville	\$201.91	\$180.69	\$166.09	\$190.43	\$31.54	\$221.97
16	Detroit	\$196.65	\$165.79	\$130.77	\$188.70	\$28.31	\$217.01
17	Austin, Texas	\$206.39	\$164.06	\$144.51	\$186.74	\$29.13	\$215.87
18	Denver	\$190.12	\$177.50	\$150.58	\$185.43	\$29.21	\$214.64
19	Portland, Ore.	\$199.29	\$158.33	\$157.06	\$181.96	\$27.84	\$209.80
20	Miami	\$181.39	\$152.15	\$147.68	\$185.20	\$24.08	\$209.28
21	Baltimore	\$176.74	\$165.65	\$138.60	\$175.52	\$28.96	\$204.48
22	New Orleans	\$172.54	\$162.12	\$150.20	\$174.88	\$29.54	\$204.42
23	Newark, N.J.	\$193.16	\$149.80	\$130.36	\$175.25	\$26.94	\$202.19
24	Charlotte, N.C.	\$194.36	\$154.12	\$134.55	\$174.63	\$26.63	\$201.26
25	Minneapolis	\$183.41	\$155.96	\$127.49	\$177.08	\$23.73	\$200.81
26	San Diego	\$188.70	\$171.11	\$150.16	\$177.60	\$23.00	\$200.60
27	Atlanta	\$165.72	\$150.10	\$125.97	\$167.21	\$30.08	\$197.29
28	Charleston, S.C.	\$181.05	\$175.50	\$130.52	\$167.50	\$23.78	\$191.28
29	Rochester, Minn.	\$194.44	\$153.75	\$119.80	\$165.51	\$25.03	\$190.54
30	Houston	\$176.28	\$141.67	\$122.20	\$161.44	\$27.44	\$188.88
31	Dallas	\$170.88	\$139.87	\$132.54	\$166.31	\$21.62	\$187.93
32	Fort Lauderdale, Fla.	\$169.02	\$163.34	\$133.06	\$166.14	\$19.94	\$186.08
33	Anaheim, Calif.	\$163.67	\$182.88	\$140.99	\$157.45	\$26.77	\$184.22
34	Wilmington, Del.	\$163.44	\$157.72	\$114.15	\$165.85	\$16.59	\$182.44
35	Providence, R.I.	\$161.80	\$149.65	\$151.38	\$160.97	\$20.93	\$181.90
36	Cincinnati	\$168.15	\$156.72	\$132.89	\$153.69	\$26.90	\$180.59
	Total Average	\$166.36	\$150.84	\$132.95	\$156.82	\$23.30	\$180.12
37	Las Vegas	\$139.60	\$144.83	\$139.29	\$157.43	\$20.47	\$177.90
38	Tampa, Fla.	\$177.29	\$142.41	\$129.00	\$157.78	\$18.93	\$176.71
39	Kansas City, Mo.	\$157.88	\$141.91	\$128.11	\$146.96	\$28.22	\$175.18
40	Pittsburgh	\$163.55	\$135.65	\$125.32	\$153.17	\$21.44	\$174.61
41	Salt Lake City	\$167.42	\$136.78	\$135.67	\$154.50	\$19.93	\$174.43
42	St. Louis	\$156.61	\$128.84	\$120.31	\$147.51	\$25.08	\$172.59
43	Cleveland	\$147.01	\$157.15	\$131.52	\$148.86	\$24.56	\$173.42
44	Grand Rapids, Mich.	\$177.77	\$142.24	\$131.68	\$150.57	\$22.59	\$173.16
45	Louisville, Ky.	\$156.34	\$142.77	\$134.99	\$147.85	\$22.28	\$170.13
46	Greenville, S.C.	\$164.00	\$130.36	\$125.95	\$143.99	\$25.92	\$169.91
47	Indianapolis	\$158.25	\$128.88	\$121.19	\$145.16	\$24.68	\$169.84
48	Milwaukee	\$157.77	\$133.31	\$119.92	\$145.66	\$21.48	\$167.14
49	Columbus, Ohio	\$153.89	\$135.79	\$125.07	\$142.13	\$24.87	\$167.00
50	Madison, Wis.	\$152.02	\$150.74	\$135.64	\$144.60	\$21.69	\$166.29

Rank	City	Upper-Upscale ADR	Upscale ADR	Midscale ADR	Average ADR, Including Luxury & Economy	Sales Tax, Occupancy Tax & Surcharges	Total
51	Sarasota, Fla.	\$171.10	\$145.24	\$129.99	\$148.36	\$17.80	\$166.16
52	Albany, N.Y.	\$160.39	\$143.00	\$125.31	\$144.56	\$20.24	\$164.80
53	Richmond, Va.	\$156.99	\$128.21	\$117.23	\$145.30	\$19.32	\$164.62
54	Buffalo, N.Y.	\$152.67	\$124.40	\$123.88	\$144.25	\$20.20	\$164.45
55	Des Moines, Iowa	\$162.41	\$158.02	\$128.97	\$146.01	\$17.52	\$163.53
56	Memphis, Tenn.	\$149.14	\$123.58	\$116.60	\$136.80	\$26.28	\$163.08
57	Raleigh, N.C.	\$158.79	\$132.87	\$123.77	\$143.18	\$18.97	\$162.15
57	Sacramento, Calif.	\$160.85	\$138.29	\$122.67	\$140.83	\$21.32	\$162.15
59	Phoenix	\$156.36	\$136.32	\$106.60	\$144.25	\$17.67	\$161.92
60	Savannah, Ga.	\$150.25	\$135.96	\$121.11	\$136.55	\$23.75	\$160.30
61	Charleston, W.V.	\$155.65	\$147.84	\$124.90	\$141.08	\$18.34	\$159.42
62	Orlando	\$145.40	\$147.38	\$120.66	\$140.68	\$17.59	\$158.27
63	Omaha, Neb.	\$143.56	\$138.23	\$111.16	\$131.88	\$23.95	\$155.83
64	San Antonio	\$148.06	\$124.77	\$107.51	\$132.90	\$22.26	\$155.16
65	Birmingham, Ala.	\$144.82	\$122.21	\$116.33	\$131.87	\$23.08	\$154.95
66	Harrisburg, Pa.	\$155.07	\$136.05	\$115.44	\$139.26	\$15.32	\$154.58
67	Columbia, S.C.	\$144.68	\$147.97	\$116.52	\$135.34	\$18.95	\$154.29
68	Toledo, Ohio	\$144.07	N/A	\$121.77	\$130.96	\$23.25	\$154.21
69	Syracuse, N.Y.	\$133.32	\$132.61	\$115.37	\$131.21	\$19.06	\$150.27
70	Knoxville, Tenn.	\$135.43	\$121.45	\$116.26	\$127.31	\$21.96	\$149.27
71	Tallahassee, Fla.	\$141.57	\$135.77	\$122.11	\$132.39	\$16.55	\$148.94
72	Greensboro, N.C.	\$144.35	\$129.08	\$108.33	\$130.81	\$17.99	\$148.80
73	Allentown, Pa.	\$172.61	\$127.71	\$115.10	\$134.38	\$13.44	\$147.82
74	Fresno, Calif.	\$144.95	\$141.01	\$114.89	\$129.63	\$17.50	\$147.13
75	Little Rock, Ark.	\$139.03	\$127.14	\$109.85	\$127.68	\$19.15	\$146.83
76	Chattanooga, Tenn.	\$134.30	\$126.54	\$112.13	\$125.09	\$21.58	\$146.67
77	El Paso, Texas	\$136.32	\$115.78	\$113.90	\$122.90	\$21.51	\$144.41
78	Corpus Christi, Texas	\$129.24	\$124.49	\$121.28	\$124.67	\$19.67	\$144.34
79	Springfield, Mo.	\$136.11	\$142.02	\$118.08	\$126.10	\$16.71	\$142.81
80	Akron, Ohio	\$131.06	\$131.05	\$106.88	\$123.90	\$18.89	\$142.79
81	Jacksonville, Fla.	\$132.38	\$128.16	\$114.99	\$125.39	\$16.30	\$141.69
82	Peoria, Ill.	\$141.77	\$127.37	\$116.26	\$126.08	\$15.13	\$141.21
83	Baton Rouge, La.	\$133.45	\$119.87	\$111.23	\$123.71	\$17.32	\$141.03
84	Rochester, N.Y.	\$141.25	\$106.22	\$108.74	\$122.72	\$17.18	\$139.90
85	Oklahoma City, Okla.	\$132.91	\$119.09	\$102.79	\$122.21	\$17.26	\$139.47
86	Lexington, Ky.	\$119.90	\$119.29	\$120.91	\$119.88	\$19.26	\$139.14
87	Wichita, Kan.	\$129.78	\$121.37	\$105.59	\$118.48	\$19.25	\$137.73
88	Fort Wayne, Ind.	\$149.96	\$110.25	\$118.45	\$120.12	\$16.82	\$136.94
89	Spokane, Wash.	\$133.26	\$124.66	\$112.35	\$119.84	\$16.50	\$136.34
90	Dayton, Ohio	\$128.90	\$116.43	\$105.00	\$120.27	\$15.64	\$135.91
91	Mobile, Ala.	\$129.02	\$114.47	\$108.41	\$118.20	\$16.55	\$134.75
92	Roanoke, Va.	\$119.32	\$120.59	\$117.66	\$117.45	\$15.62	\$133.07
93	Jackson, Miss.	\$120.86	\$124.27	\$101.04	\$118.97	\$13.84	\$132.81
94	Norfolk, Va.	\$119.36	\$107.15	\$100.78	\$111.39	\$17.59	\$128.98
95	Tucson, Ariz.	\$113.50	\$116.63	\$96.10	\$109.71	\$17.22	\$126.93
96	Albuquerque, N.M.	\$117.96	\$104.01	\$100.58	\$110.58	\$14.93	\$125.51
97	Tulsa, Okla.	\$112.83	\$96.16	\$97.26	\$107.52	\$14.54	\$122.06
98	Bakersfield, Calif.	\$110.23	\$110.92	\$103.38	\$107.08	\$12.90	\$119.98
99	Biloxi, Miss.	\$110.46	\$98.47	\$99.77	\$106.23	\$12.75	\$118.98
100	Shreveport, La.	\$102.81	\$102.50	\$102.66	\$102.72	\$16.02	\$118.74

Average daily rates are based on BCD Travel bookings for January through November 2017.

U.S. CAR RENTAL COST BREAKDOWN

Rank	City	Daily Compact Rate	Daily Intermediate Rate	Daily Full Size Rate	Average Daily Rate	Average Taxes & Fees	Total
1	New York	\$51.46	\$54.93	\$59.25	\$55.21	34.60%	\$74.31
2	Rochester, Minn.	\$38.75	\$36.37	\$39.80	\$38.31	92.63%	\$73.80
3	Omaha, Neb.	\$31.86	\$34.22	\$36.13	\$34.07	80.00%	\$61.33
4	Newark, N.J.	\$43.98	\$42.82	\$47.27	\$44.69	31.73%	\$58.87
5	Boston	\$36.62	\$35.71	\$40.12	\$37.48	52.88%	\$57.30
6	Birmingham, Ala.	\$33.20	\$33.60	\$37.36	\$34.72	61.00%	\$55.90
7	Little Rock, Ark.	\$35.79	\$33.56	\$39.03	\$36.13	48.08%	\$53.50
8	White Plains, N.Y.	\$38.57	\$40.32	\$43.67	\$40.85	30.21%	\$53.19
9	Austin, Texas	\$33.01	\$33.81	\$38.78	\$35.20	49.87%	\$52.75
10	Spokane, Wash.	\$34.99	\$36.08	\$39.22	\$36.76	40.81%	\$51.76
11	Madison, Wis.	\$32.43	\$32.98	\$36.77	\$34.06	51.61%	\$51.64
12	Phoenix	\$31.99	\$32.54	\$37.54	\$34.02	50.82%	\$51.31
13	Chicago	\$30.55	\$32.56	\$35.57	\$32.89	55.80%	\$51.24
14	San Antonio	\$30.99	\$33.78	\$37.54	\$34.10	49.51%	\$50.98
15	Roanoke, Va.	\$31.51	\$35.11	\$39.37	\$35.33	42.88%	\$50.48
16	Minneapolis	\$33.31	\$33.65	\$36.96	\$34.64	45.37%	\$50.36
17	Portland, Ore.	\$31.90	\$32.95	\$37.70	\$34.18	45.46%	\$49.72
18	Columbus, Ohio	\$33.28	\$35.84	\$37.84	\$35.65	38.44%	\$49.35
19	Philadelphia	\$34.87	\$34.89	\$37.64	\$35.80	37.67%	\$49.29
20	Kansas City, Mo.	\$29.77	\$32.44	\$35.48	\$32.56	51.26%	\$49.25
21	Dallas	\$31.96	\$33.08	\$35.46	\$33.50	46.70%	\$49.14
22	Baton Rouge, La.	\$36.19	\$32.49	\$34.53	\$34.40	41.94%	\$48.83
23	San Francisco	\$29.80	\$33.40	\$36.34	\$33.18	47.03%	\$48.78
23	New Orleans	\$32.83	\$31.51	\$36.69	\$33.68	44.84%	\$48.78
25	Santa Barbara, Calif.	\$30.84	\$31.60	\$33.84	\$32.09	51.86%	\$48.73
26	Indianapolis	\$35.78	\$33.12	\$35.75	\$34.88	39.24%	\$48.57
27	Fort Wayne, Ind.	\$32.42	\$33.25	\$37.01	\$34.23	41.77%	\$48.53
28	Houston	\$31.26	\$31.43	\$36.63	\$33.11	46.50%	\$48.51
29	Albuquerque, N.M.	\$32.97	\$32.46	\$40.00	\$35.14	36.88%	\$48.10
30	Atlanta	\$33.38	\$33.97	\$37.56	\$34.97	37.43%	\$48.06
31	Columbia, S.C.	\$30.29	\$33.40	\$35.46	\$33.05	44.96%	\$47.91
32	Des Moines, Iowa	\$35.20	\$33.66	\$34.13	\$34.33	39.40%	\$47.86
33	Oakland, Calif.	\$32.08	\$33.15	\$37.88	\$34.37	39.01%	\$47.78
34	Cincinnati	\$33.52	\$34.00	\$36.54	\$34.69	37.09%	\$47.56
35	Tucson, Ariz.	\$31.41	\$32.49	\$37.32	\$33.74	40.25%	\$47.32
36	Memphis, Tenn.	\$31.97	\$33.44	\$37.26	\$34.22	37.95%	\$47.21
37	Las Vegas	\$30.12	\$31.90	\$36.99	\$33.00	43.02%	\$47.20
38	Seattle	\$32.83	\$32.92	\$36.57	\$34.11	37.42%	\$46.87
38	Peoria, Ill.	\$32.73	\$35.02	\$38.45	\$35.40	32.41%	\$46.87
40	Salt Lake City	\$32.61	\$32.89	\$35.67	\$33.72	38.71%	\$46.77
41	Charleston, W.V.	\$27.30	\$34.18	\$34.54	\$32.01	45.98%	\$46.73
42	Cleveland	\$31.18	\$33.89	\$36.99	\$34.02	37.09%	\$46.64
	Total Average	\$32.56	\$33.09	\$36.55	\$34.07	36.40%	\$46.51
43	Hartford, Conn.	\$32.11	\$33.36	\$37.27	\$34.25	35.54%	\$46.42
44	Harrisburg, Pa.	\$33.63	\$31.20	\$34.35	\$33.06	40.35%	\$46.40
45	Springfield, Mo.	\$32.32	\$33.14	\$34.90	\$33.45	38.60%	\$46.36
46	Albany, N.Y.	\$35.44	\$35.03	\$39.14	\$36.54	26.67%	\$46.29
47	Los Angeles	\$31.33	\$33.09	\$35.10	\$33.17	39.44%	\$46.25
48	Charlotte, N.C.	\$31.31	\$33.21	\$37.25	\$33.92	36.28%	\$46.23
49	Denver	\$33.81	\$34.59	\$36.32	\$34.91	32.18%	\$46.14
50	St. Louis	\$33.82	\$34.53	\$36.75	\$35.03	31.33%	\$46.00

3RD ANNUAL

BUSINESS TRAVEL trends & forecasts



**LOEWS
MINNEAPOLIS HOTEL**

MINNEAPOLIS

4.17.18

Business Travel Trends & Forecasts Minneapolis is a one-day, buyer-focused conference designed to enhance corporate travel and meetings programs by uniting industry peers and providing a platform for information sharing.

GAIN
valuable insight
on travel risk
management

EXAMINE
airline industry
conditions and
hotel sourcing
strategies

EXPLORE
opportunities
from listening
to travelers



**BONNIE
CHRISTENSEN**

Global Travel and
Security Manager

Donaldson Co.



**FIONA
LAPOINTE**

Travel Manager

Cargill



**SHERRY
MARSHALL**

Senior Travel
Manager

PwC



KRISTIN OJALA

Senior Manager,
Global Travel &
Employee Services

General Mills

REGISTER TODAY!

www.BusinessTravelTrends.com/Minn

SPONSORED BY



U.S. CAR RENTAL COST BREAKDOWN

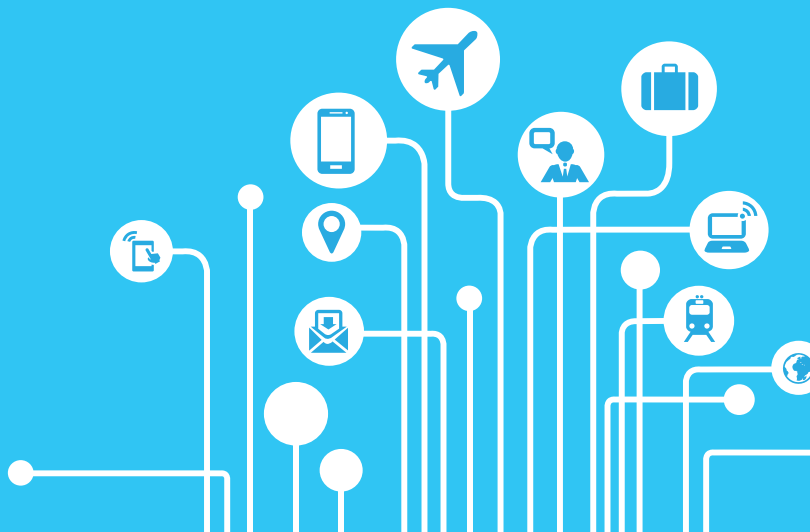
Rank	City	Daily Compact Rate	Daily Intermediate Rate	Daily Full Size Rate	Average Daily Rate	Average Taxes & Fees	Total
51	Toledo, Ohio	\$33.99	\$34.62	\$36.92	\$35.18	30.28%	\$45.83
51	Lexington, Ky.	\$31.46	\$32.55	\$35.50	\$33.17	38.16%	\$45.83
53	Tulsa, Okla.	\$32.75	\$30.21	\$36.10	\$33.02	37.61%	\$45.44
54	Pittsburgh	\$33.09	\$31.93	\$37.32	\$34.11	32.96%	\$45.35
55	Chattanooga, Tenn.	\$32.43	\$30.72	\$36.62	\$33.26	36.24%	\$45.31
56	Milwaukee	\$33.42	\$34.21	\$37.41	\$35.01	29.22%	\$45.24
57	Oklahoma City, Okla.	\$32.27	\$31.95	\$34.72	\$32.98	36.65%	\$45.07
58	Wichita, Kan.	\$30.95	\$29.25	\$35.05	\$31.75	40.61%	\$44.64
59	Raleigh, N.C.	\$32.49	\$30.99	\$35.43	\$32.97	35.16%	\$44.56
60	Corpus Christi, Texas	\$29.50	\$31.42	\$34.28	\$31.73	40.41%	\$44.55
61	Buffalo, N.Y.	\$33.31	\$34.08	\$37.30	\$34.90	27.49%	\$44.49
62	Greensboro, N.C.	\$31.47	\$31.28	\$36.08	\$32.94	34.96%	\$44.46
63	El Paso, Texas	\$30.67	\$31.31	\$33.66	\$31.88	39.23%	\$44.39
64	Jackson, Miss.	\$34.10	\$33.10	\$36.57	\$34.59	28.30%	\$44.38
65	Nashville	\$31.59	\$33.34	\$36.36	\$33.76	31.37%	\$44.35
66	Louisville, Ky.	\$33.08	\$33.76	\$36.07	\$34.30	29.12%	\$44.29
67	San Diego	\$30.79	\$31.71	\$33.52	\$32.01	38.12%	\$44.21
68	Akron, Ohio	\$32.59	\$35.16	\$37.45	\$35.07	25.97%	\$44.18
69	Baltimore	\$32.88	\$34.00	\$34.05	\$33.64	30.68%	\$43.96
70	Dayton, Ohio	\$31.01	\$33.22	\$34.64	\$32.96	32.53%	\$43.68
71	Mobile, Ala.	\$33.75	\$30.21	\$34.67	\$32.88	32.02%	\$43.41
72	Tallahassee, Fla.	\$30.64	\$32.77	\$37.17	\$33.53	29.30%	\$43.35
73	Charleston, S.C.	\$31.65	\$31.56	\$36.40	\$33.20	29.81%	\$43.10
74	Rochester, N.Y.	\$33.34	\$32.66	\$36.02	\$34.01	26.67%	\$43.08
75	Anaheim, Calif.	\$32.77	\$33.21	\$35.83	\$33.94	26.65%	\$42.99
76	Fresno, Calif.	\$30.82	\$33.43	\$33.55	\$32.60	31.16%	\$42.76
77	Grand Rapids, Mich.	\$33.18	\$33.85	\$36.22	\$34.42	23.68%	\$42.57
78	Richmond, Va.	\$31.56	\$32.52	\$36.34	\$33.47	26.98%	\$42.50
79	Shreveport, La.	\$33.85	\$31.13	\$35.31	\$33.43	26.41%	\$42.26
80	Bakersfield, Calif.	\$28.35	\$32.79	\$40.91	\$34.02	23.86%	\$42.14
80	Jacksonville, Fla.	\$30.05	\$32.16	\$34.73	\$32.31	30.41%	\$42.14
82	Tampa, Fla.	\$30.88	\$31.77	\$35.06	\$32.57	28.52%	\$41.86
83	Knoxville, Tenn.	\$31.53	\$31.76	\$35.56	\$32.95	27.00%	\$41.85
84	San Jose, Calif.	\$29.27	\$32.33	\$34.01	\$31.87	31.11%	\$41.78
85	Syracuse, N.Y.	\$31.50	\$32.32	\$34.74	\$32.85	26.67%	\$41.61
86	Sarasota, Fla.	\$31.74	\$31.90	\$34.50	\$32.71	26.97%	\$41.53
87	Sacramento, Calif.	\$31.36	\$32.76	\$35.60	\$33.24	24.13%	\$41.26
88	Miami	\$29.75	\$30.99	\$37.50	\$32.75	25.77%	\$41.19
89	Washington, D.C.	\$31.99	\$32.33	\$34.28	\$32.87	24.90%	\$41.05
90	Greenville, S.C.	\$31.23	\$30.74	\$35.37	\$32.45	26.14%	\$40.93
91	Savannah, Ga.	\$30.08	\$28.92	\$35.20	\$31.40	29.80%	\$40.76
92	Allentown, Pa.	\$31.11	\$30.17	\$33.25	\$31.51	29.05%	\$40.66
93	Detroit	\$31.08	\$31.57	\$35.86	\$32.84	23.29%	\$40.49
94	Norfolk, Va.	\$30.71	\$31.32	\$34.59	\$32.21	25.19%	\$40.32
95	Biloxi, Miss.	\$30.11	\$29.96	\$32.84	\$30.97	29.19%	\$40.01
96	Orlando	\$31.39	\$30.11	\$33.31	\$31.60	25.79%	\$39.75
97	Fort Lauderdale, Fla.	\$29.73	\$31.26	\$35.70	\$32.23	22.67%	\$39.54
98	Providence, R.I.	\$33.49	\$32.12	\$34.64	\$33.42	16.91%	\$39.07
99	Honolulu	\$29.35	\$28.62	\$31.11	\$29.69	25.07%	\$37.13
100	Wilmington, Del.	\$35.01	\$29.42	\$34.26	\$32.90	11.48%	\$36.68

Daily rates are based on BCD Travel bookings for January through November 2017.

BUSINESS TRAVEL 8th Annual TECH TALK

MAY 7, 2018

CHICAGO



LOEWS CHICAGO HOTEL

THE TRAVEL MANAGEMENT TECHNOLOGY CONFERENCE

Join the BTN Group for the industry's eighth annual conference dedicated to travel management technology and designed exclusively for corporate travel buyers. Over 100 of your corporate travel peers will discuss industry trends and developments, network with peers, and learn about new technologies for managing travel and meetings spending.

PRODUCED BY

BTNGROUP
CONFERENCES

SPONSORED BY

avis budget group

Avis
Budget
Zipcar
Payless
Apex

LOEWS
HOTELS

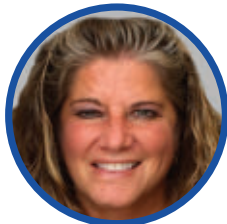
roadmap®

RoomIt
by CWT

TRIPBAM

UNITED
A STAR ALLIANCE MEMBER

FEATURED SPEAKERS



**SHARI
QUACKENBUSH**
Global Procurement
Strategic Sourcing
Professional
IBM



STEVE CLAGG
Travel Technology
Manager
Microsoft



YANIK HOYLES
Director, New
Distribution Capability
Program
IATA



TYE RADCLIFFE
Director, Distribution
United Airlines

**REGISTER
TODAY!**

www.BTNGroupConferences.com/TechTalkChicago

U.S. FOOD COST BREAKDOWN

Rank	City	Breakfast	Lunch	Dinner	Total
1	New York	\$23.56	\$32.08	\$86.90	\$142.54
2	Honolulu	\$18.88	\$27.47	\$87.44	\$133.79
3	San Francisco	\$21.53	\$22.72	\$87.30	\$131.55
4	Seattle	\$20.01	\$21.71	\$89.74	\$131.46
5	Santa Barbara, Calif.	\$18.84	\$28.83	\$83.61	\$131.28
6	Denver	\$19.00	\$22.68	\$79.86	\$121.54
7	Madison, Wis.	\$15.92	\$22.62	\$80.27	\$118.81
8	Houston	\$19.09	\$30.98	\$66.61	\$116.68
9	Dallas	\$18.53	\$29.94	\$67.51	\$115.98
10	Boston	\$17.73	\$27.14	\$68.75	\$113.62
11	Chicago	\$20.32	\$28.79	\$64.21	\$113.32
12	Miami	\$19.25	\$30.95	\$62.21	\$112.41
12	Portland, Ore.	\$19.25	\$30.95	\$62.21	\$112.41
14	Minneapolis	\$17.92	\$29.64	\$64.79	\$112.35
15	New Orleans	\$15.76	\$25.69	\$69.53	\$110.98
16	Hartford, Conn.	\$17.76	\$23.64	\$69.57	\$110.97
17	San Jose, Calif.	\$19.72	\$28.24	\$62.32	\$110.28
18	Greenville, S.C.	\$13.38	\$27.02	\$69.74	\$110.14
19	Oakland, Calif.	\$17.78	\$25.12	\$66.87	\$109.77
20	Los Angeles	\$19.94	\$30.02	\$59.62	\$109.58
21	Baltimore	\$17.03	\$28.53	\$63.94	\$109.50
22	Providence, R.I.	\$15.53	\$33.88	\$59.25	\$108.66
23	Charleston, S.C.	\$16.40	\$26.52	\$63.94	\$106.86
24	Las Vegas	\$17.13	\$23.59	\$65.84	\$106.56
25	Fort Lauderdale, Fla.	\$15.07	\$31.34	\$60.13	\$106.54
26	Atlanta	\$19.39	\$24.99	\$61.99	\$106.37
27	Charlotte, N.C.	\$14.70	\$25.76	\$65.43	\$105.89
28	Cincinnati	\$16.08	\$23.15	\$65.84	\$105.07
29	Sacramento, Calif.	\$21.20	\$29.17	\$53.54	\$103.91

Rank	City	Breakfast	Lunch	Dinner	Total
30	White Plains, N.Y.	\$14.93	\$24.63	\$64.24	\$103.80
31	Anaheim, Calif.	\$19.76	\$31.37	\$52.08	\$103.21
32	Austin, Texas	\$18.01	\$26.03	\$58.08	\$102.12
33	Columbia, S.C.	\$14.75	\$31.81	\$54.96	\$101.52
34	Memphis, Tenn.	\$15.52	\$24.81	\$59.96	\$100.29
35	Milwaukee	\$15.94	\$24.08	\$60.26	\$100.28
36	Nashville	\$23.35	\$23.91	\$52.98	\$100.24
37	Orlando	\$15.48	\$27.44	\$57.10	\$100.02
38	Philadelphia	\$18.06	\$28.32	\$53.52	\$99.90
39	San Diego	\$17.26	\$28.79	\$53.68	\$99.73
40	Detroit	\$15.67	\$26.85	\$56.80	\$99.32
41	Wilmington, Del.	\$13.96	\$22.95	\$62.32	\$99.23
42	Columbus, Ohio	\$14.35	\$22.32	\$62.39	\$99.06
43	Washington, D.C.	\$15.64	\$24.29	\$58.94	\$98.87
44	Oklahoma City, Okla.	\$15.16	\$24.73	\$58.55	\$98.44
	Total Average	\$15.86	\$25.07	\$57.16	\$98.09
45	Tulsa, Okla.	\$14.23	\$28.96	\$54.59	\$97.78
46	Peoria, Ill.	\$13.92	\$24.96	\$57.91	\$96.79
47	St. Louis	\$15.33	\$24.43	\$56.82	\$96.58
48	Spokane, Wash.	\$16.44	\$26.74	\$53.14	\$96.32
49	Pittsburgh	\$15.09	\$25.84	\$55.36	\$96.29
50	Buffalo, N.Y.	\$14.65	\$25.86	\$55.36	\$95.87
51	Birmingham, Ala.	\$14.84	\$25.42	\$55.52	\$95.78
52	Albany, N.Y.	\$12.39	\$26.75	\$56.59	\$95.73
53	Fresno, Calif.	\$18.79	\$29.77	\$47.01	\$95.57
54	Knoxville, Tenn.	\$13.79	\$26.52	\$54.22	\$94.53
55	Rochester, Minn.	\$12.66	\$23.64	\$57.71	\$94.01
56	Charleston, W.V.	\$14.79	\$25.43	\$53.10	\$93.32
57	Roanoke, Va.	\$15.50	\$21.52	\$56.29	\$93.31

BTNGROUP



Louis Magliaro, Senior Vice President & Group Publisher • 973.769.0028 • lmagliaro@thebtngroup.com

EDITORIAL

Elizabeth West

Editor-in-Chief • 732.494.1955
ewest@thebtngroup.com

Jay Boehmer

Editor-in-Chief, The Beat • 646.380.6249
jboehmer@thebtngroup.com

Amanda Metcalf, Managing Editor

646.380.6248 • ametcalf@thebtngroup.com

Michael B. Baker, Senior Editor,

Transportation • 646.380.6250
mbaker@thebtngroup.com

Julie Sickel, Editor, Lodging

646.380.6264 • jsickel@thebtngroup.com

JoAnn DeLuna, Associate Editor,

Payment & Expense • 646.380.6268
jdeluna@thebtngroup.com

Dawit Habtemariam, Staff Writer &

Assistant Editor • 646.380.6267
dhabtemariam@thebtngroup.com

James Jarnot, Art Director

646.380.6252 • jjarnot@thebtngroup.com

SALES

Anthony Carnevale

Publisher • 201.902.1976
acarnevale@thebtngroup.com

Edie Garfinkle

Advertising Director • 805.389.6836
egarfinkle@thebtngroup.com

Lindsay Straub

Business Development Manager
646.380.6274 • lstraub@thebtngroup.com

PRODUCTION & CIRCULATION

Michele Garth, Production Manager
201.902.1930 • mgarth@ntmlc.com

Lisa Gonzales and Gayle Graizzaro

Production Specialists • 201.902.2000
lgonzales@ntmlc.com
ggraizzaro@ntmlc.com

Kwafu Anoff, Director of Circulation

201.901.2103 • kanoff@ntmlc.com

MARKETING

Max Bzdyk, Marketing Assistant

646.346.5676 • mbzdyk@thebtngroup.com

CONFERENCES

David Meyer, Executive Director,

Conference Content & Strategy
646.380.6246 • dmeyer@thebtngroup.com

Melissa Gain, Event Manager

917.626.6832 • mgain@thebtngroup.com

LIST RENTAL

Danielle Zaborski, MeritDirect

914.368.1090 • dzaborski@meritdirect.com

REPRINTS OR COPYRIGHT PERMISSION

Brett Petillo, Wright's Media
877.652.5295 • bpetillo@wrightsmedia.com

CONTENT SOLUTIONS

Mary Ann McNulty, Director

630.519.4510 • mmculty@thebtngroup.com

Mariza Moreira, Group Design Manager

201.902.1965 • mmoreira@ntmlc.com

SUBSCRIPTION SERVICES

800.869.6882 • btn@kmpsgroup.com
BTN, PO Box 47655, Plymouth, MN 55447

Thomas L. Kemp

Chairman & Chief Executive Officer

Lisa Cohen, Chief Financial Officer

Robert G. Sullivan, President, Travel Group

Thomas Cintorino

Executive Vice President, Digital Media

David Blansfield

Executive Vice President & Group Publisher

Lori Cioffi

Senior Vice President & Editorial Director

Arnie Weissmann

Senior Vice President & Editorial Director

Janine L. Bavoso

Senior Vice President, Human Resources

Roberta Muller

Senior Vice President, Product Development & Production

Sheila Rice

Vice President, Information Products Group

Richard Mastropietro

Vice President, IT Infrastructure & Operations

Elizabeth Koessler

Vice President, Database Products

Rank	City	Breakfast	Lunch	Dinner	Total
58	Cleveland	\$14.12	\$32.35	\$46.35	\$92.82
59	Syracuse, N.Y.	\$13.41	\$27.33	\$51.99	\$92.73
60	Phoenix	\$16.40	\$21.40	\$54.67	\$92.47
61	Kansas City, Mo.	\$16.07	\$26.66	\$49.64	\$92.37
62	Shreveport, La.	\$14.48	\$19.67	\$57.46	\$91.61
63	Tampa, Fla.	\$15.54	\$25.86	\$50.01	\$91.41
64	Omaha, Neb.	\$15.68	\$21.15	\$54.33	\$91.16
65	Harrisburg, Pa.	\$15.03	\$24.22	\$51.80	\$91.05
66	Springfield, Mo.	\$12.83	\$22.82	\$55.39	\$91.04
67	Baton Rouge, La.	\$13.50	\$23.34	\$54.07	\$90.91
68	Rochester, N.Y.	\$14.71	\$22.66	\$52.41	\$89.78
69	Allentown, Pa.	\$11.81	\$22.12	\$55.73	\$89.66
70	Grand Rapids, Mich.	\$15.98	\$24.98	\$47.56	\$88.52
70	Tucson, Ariz.	\$14.97	\$25.45	\$48.10	\$88.52
72	Greensboro, N.C.	\$14.46	\$25.14	\$48.88	\$88.48
73	Fort Wayne, Ind.	\$15.64	\$20.03	\$52.72	\$88.39
74	Indianapolis	\$15.46	\$21.12	\$51.32	\$87.90
75	Biloxi, Miss.	\$16.79	\$25.10	\$45.84	\$87.73
75	Dayton, Ohio	\$13.58	\$21.52	\$52.63	\$87.73
77	Little Rock, Ark.	\$15.47	\$23.27	\$48.71	\$87.45
78	Savannah, Ga.	\$14.53	\$25.15	\$47.65	\$87.33
79	Jackson, Miss.	\$14.45	\$24.44	\$48.40	\$87.29
80	San Antonio	\$14.52	\$20.11	\$52.45	\$87.08
81	Tallahassee, Fla.	\$13.71	\$23.69	\$49.50	\$86.90

Rank	City	Breakfast	Lunch	Dinner	Total
82	Mobile, Ala.	\$15.24	\$20.72	\$50.82	\$86.78
83	Akron, Ohio	\$14.88	\$25.63	\$46.02	\$86.53
83	Albuquerque, N.M.	\$14.88	\$25.63	\$46.02	\$86.53
85	Chattanooga, Tenn.	\$12.53	\$21.94	\$51.97	\$86.44
86	Richmond, Va.	\$15.52	\$20.33	\$50.46	\$86.31
87	El Paso, Texas	\$15.25	\$29.96	\$41.04	\$86.25
88	Sarasota, Fla.	\$14.59	\$23.24	\$48.00	\$85.83
89	Raleigh, N.C.	\$14.76	\$25.00	\$45.97	\$85.73
90	Jacksonville, Fla.	\$13.85	\$24.51	\$47.35	\$85.71
91	Bakersfield, Calif.	\$13.90	\$18.05	\$53.52	\$85.47
92	Lexington, Ky.	\$13.54	\$20.85	\$48.61	\$83.00
92	Newark, N.J.	\$11.68	\$17.00	\$54.32	\$83.00
94	Louisville, Ky.	\$13.99	\$19.40	\$49.25	\$82.64
95	Des Moines, Iowa	\$13.17	\$25.12	\$42.82	\$81.11
96	Wichita, Kan.	\$13.40	\$20.75	\$46.49	\$80.64
97	Salt Lake City	\$13.44	\$17.81	\$49.11	\$80.36
98	Toledo, Ohio	\$14.97	\$14.97	\$49.19	\$79.13
99	Norfolk, Va.	\$13.81	\$23.18	\$41.26	\$78.25
100	Corpus Christi, Texas	\$12.45	\$21.66	\$38.08	\$72.19

Breakfast is based on two eggs, meat, toast & coffee or orange juice; lunch on soup, a hamburger or chicken sandwich, a slice of pie & a soft drink; & dinner on soup, a filet steak, a glass of red wine, dessert & coffee. New York University School of Professional Studies Jonathan M. Tisch Center for Hospitality and Tourism students called restaurants in January & February 2018. For cities with an annual GDP above \$95 billion, they surveyed three chains, six independent restaurants identified via TripAdvisor & three hotel restaurants for breakfast.; for each lunch and dinner, they called six chains & six independents. For smaller cities, they surveyed two independents & one hotel for breakfast & three chains & three independents for each lunch & dinner. Sample breakfast chains include Denny's, IHOP & Starbucks. Sample lunch chains include Chili's, Applebee's, Panera & Olive Garden. Sample dinner chains include LongHorn Steakhouse & Olive Garden.



Are you leaving money on the table?

You have negotiated hotel, air and other categories, but are you thinking about ways to manage your dining spend?

Dinova's marketplace represents the leading corporations who are taking charge of their dining programs. We connect you with restaurants who understand the value of business diners.

DINOVA SERVES UP A DELICIOUS OPPORTUNITY TO SAVE

Earn rebates when your employees dine on company business using their existing corporate credit cards in Dinova partner restaurants.

DINING IS THE
3RD
LARGEST
T&E CATEGORY

OUR MARKETPLACE IS
14,000+
RESTAURANTS
AND GROWING

DINOVA HAS
\$7B
UNDER MANAGEMENT



YOU PROMOTE
INTERNALLY



EMPLOYEES
DINE IN THE
MARKETPLACE



DINOVA DOES
ALL THE WORK



YOUR COMPANY
SAVES

To learn more about the program and see a comprehensive list of restaurants, [visit dinova.com/companyjoin](http://visit.dinova.com/companyjoin).

Rank	City	Hotel in USD	Taxi from Airport to City Center in USD	Food in USD	Total in USD
1	Tokyo	\$250.77	\$205.40	\$123.47	\$579.63
2	Muscat	\$203.40	\$191.42	\$126.55	\$521.36
3	Zurich	\$264.72	\$62.25	\$179.29	\$506.26
4	London	\$269.88	\$108.64	\$115.47	\$493.99
5	Geneva	\$239.40	\$63.53	\$133.89	\$436.82
6	Oslo	\$197.57	\$103.66	\$130.10	\$431.34
7	Tel Aviv	\$272.75	\$43.02	\$113.68	\$429.45
8	Milan	\$212.08	\$113.02	\$100.68	\$425.77
9	Paris	\$223.10	\$57.10	\$145.34	\$425.55
10	Hong Kong	\$250.50	\$36.12	\$136.85	\$423.47
11	Basel	\$232.82	\$48.72	\$125.13	\$406.68
12	Kuwait City	\$229.96	\$69.49	\$103.79	\$403.25
13	Munich	\$177.12	\$92.15	\$126.37	\$395.64
14	Seoul	\$199.08	\$48.04	\$146.61	\$393.72
15	Sydney	\$234.26	\$36.65	\$119.38	\$390.30
16	Copenhagen	\$221.25	\$47.86	\$121.03	\$390.14
17	Cologne	\$164.80	\$112.54	\$106.89	\$384.24
18	Rome	\$197.51	\$65.43	\$120.85	\$383.80
19	Stockholm	\$184.89	\$66.52	\$130.00	\$381.41
20	Brussels	\$183.80	\$46.40	\$146.63	\$376.83
21	Osaka-Kobe	\$209.35	\$55.66	\$106.69	\$371.70
22	Riyadh	\$213.63	\$17.60	\$139.30	\$370.54
23	Amsterdam	\$193.22	\$53.14	\$119.46	\$365.83
24	Shanghai	\$158.73	\$28.57	\$177.37	\$364.67
25	Luxembourg	\$214.65	\$40.45	\$108.46	\$363.56
26	Barcelona	\$187.46	\$41.64	\$132.96	\$362.06
27	Helsinki	\$190.22	\$56.13	\$112.05	\$358.40
28	Lyon	\$166.18	\$86.85	\$101.32	\$354.34
29	Singapore	\$197.75	\$17.18	\$139.27	\$354.20
30	Taipei	\$198.38	\$36.65	\$110.66	\$345.68
31	Stavanger	\$172.53	\$38.85	\$131.88	\$343.26
32	Auckland	\$218.11	\$35.87	\$83.00	\$336.97
33	Athens	\$185.29	\$35.69	\$115.65	\$336.63
34	Dublin	\$219.30	\$30.97	\$82.04	\$332.31
35	Edinburgh	\$192.10	\$49.19	\$88.50	\$329.79
36	Frankfurt	\$177.21	\$52.66	\$99.60	\$329.46
37	Melbourne	\$204.98	\$29.33	\$94.06	\$328.37
38	Grenoble	\$126.87	\$102.88	\$95.91	\$325.66
39	Abu Dhabi	\$152.20	\$43.56	\$126.42	\$322.18
40	Madrid	\$175.27	\$40.45	\$99.91	\$315.63
41	The Hague	\$157.10	\$60.35	\$97.60	\$315.05
42	Prague	\$148.92	\$31.24	\$133.84	\$313.99
43	Lisbon	\$164.23	\$26.17	\$118.57	\$308.98
44	Dubai	\$173.94	\$17.15	\$117.60	\$308.70
45	Vienna	\$157.42	\$47.98	\$102.57	\$307.97
	Total Average	\$169.96	\$38.44	\$96.20	\$304.60
46	Hamburg	\$154.64	\$44.65	\$99.74	\$299.03
47	San Juan	\$189.81	\$25.00	\$83.08	\$297.89
48	Stuttgart	\$143.64	\$38.38	\$115.22	\$297.24
49	Vancouver	\$175.38	\$25.70	\$90.37	\$291.46
50	Antwerp	\$141.13	\$33.74	\$116.16	\$291.03

Rank	City	Hotel in USD	Taxi from Airport to City Center in USD	Food in USD	Total in USD
51	Toronto	\$160.33	\$35.99	\$94.57	\$290.89
52	Dusseldorf	\$150.93	\$30.43	\$107.98	\$289.34
53	Nice	\$150.63	\$39.26	\$99.34	\$289.23
54	Berlin	\$145.90	\$31.32	\$110.52	\$287.75
55	Lima	\$187.43	\$27.84	\$72.13	\$287.39
56	Birmingham	\$146.83	\$59.56	\$78.45	\$284.84
57	Glasgow	\$160.95	\$44.65	\$78.85	\$284.44
58	Doha	\$166.91	\$9.16	\$107.76	\$283.83
59	Manchester	\$167.24	\$39.88	\$75.56	\$282.69
60	Shenzhen	\$130.49	\$19.01	\$127.82	\$277.32
61	Beijing	\$141.49	\$13.30	\$118.08	\$272.87
62	Nairobi	\$195.21	\$7.13	\$69.09	\$271.43
63	Buenos Aires	\$156.41	\$23.23	\$86.62	\$266.26
64	Lagos	\$211.23	\$1.66	\$51.62	\$264.51
65	Moscow	\$157.24	\$19.53	\$85.18	\$261.95
66	Quito	\$146.09	\$37.00	\$76.00	\$259.09
67	Kiev	\$205.12	\$10.30	\$42.45	\$257.87
68	Ottawa	\$155.42	\$21.21	\$78.76	\$255.39
69	Santiago	\$162.95	\$23.31	\$68.52	\$254.78
70	Montreal	\$147.88	\$31.54	\$72.67	\$252.09
71	Calgary	\$141.24	\$28.90	\$78.30	\$248.44
72	Rotterdam	\$146.24	\$11.90	\$87.04	\$245.18
73	Guangzhou	\$129.81	\$17.39	\$97.41	\$244.60
74	Sao Paulo	\$134.41	\$36.87	\$69.44	\$240.73
75	Hanoi	\$162.99	\$14.30	\$60.68	\$237.97
76	Warsaw	\$139.58	\$8.79	\$85.52	\$233.90
77	Panama City	\$126.04	\$37.00	\$69.67	\$232.71
78	Bratislava	\$128.19	\$9.52	\$93.33	\$231.04
79	St. Petersburg	\$157.08	\$7.18	\$65.68	\$229.94
80	Manila	\$170.39	\$2.90	\$54.36	\$227.65
81	Budapest	\$136.44	\$2.63	\$86.02	\$225.09
82	Rio de Janeiro	\$113.91	\$26.12	\$81.02	\$221.04
83	Istanbul	\$123.05	\$36.37	\$60.69	\$220.11
84	Mexico City	\$138.82	\$15.03	\$61.94	\$215.80
85	San Salvador	\$131.52	\$28.00	\$55.92	\$215.44
86	Bucharest	\$135.58	\$6.68	\$72.47	\$214.73
87	Johannesburg	\$135.18	\$40.25	\$38.95	\$214.37
88	New Delhi	\$131.35	\$4.42	\$76.67	\$212.43
89	Bangkok	\$131.73	\$7.85	\$72.41	\$211.99
90	Kuala Lumpur	\$111.68	\$22.13	\$75.53	\$209.35
91	San Jose	\$127.61	\$24.03	\$56.06	\$207.70
92	Mumbai	\$132.33	\$7.13	\$67.26	\$206.72
93	Guayaquil	\$116.93	\$5.00	\$82.71	\$204.64
94	Jakarta	\$135.05	\$9.37	\$59.67	\$204.08
95	Guatemala City	\$121.57	\$11.72	\$60.27	\$193.55
96	Bogota	\$138.69	\$8.34	\$40.70	\$187.73
97	Tianjin	\$97.14	\$6.65	\$83.78	\$187.58
98	Cape Town	\$127.18	\$11.67	\$47.91	\$186.75
99	Bangalore	\$123.20	\$4.82	\$50.84	\$178.86
100	Cairo	\$134.95	\$4.47	\$34.08	\$173.50

Hotel average daily rates do not include taxes & are based on BCD Travel bookings between January & November 2017 on a rolling conversion from local currency to U.S. dollars on the date paid.

JOIN 100
of your data-
focused travel
industry peers!

**BRAND
NEW!**

business travel intelligence summit

MAY 22, 2018

NEW YORK CITY

Millennium Broadway Hotel New York

Harness the Growing Power of Data Science

Join the BTN Group, publishers of *Business Travel News*, *Travel Procurement* and *the Beat*, for the inaugural Business Travel Intelligence Summit, a one-day, buyer-focused conference bringing together the industry's best and brightest data management minds.

Leveraging travel spending data has always been essential to business travel programs, but recent developments in data sources, tools and applications are empowering travel buyers to become more effective agents of change in their organizations.

- Gain insight into sources of data and what they can deliver
- Apply AI and produce predictive analysis
- Create KPIs that matter to senior management

**REGISTER
NOW!**

www.btngroupconferences.com/btis



CINDY HESTON
Director Travel and Events
Anthem



MARTA RODRIGUEZ MARTINEZ
Global Travel BI & Analytics
Microsoft



MICHELLE DE COSTA
Head, Global Travel/Meetings
& Events/Fleet/Aviation
Shire

DIAMOND SPONSOR



SILVER SPONSOR



BRONZE SPONSORS



PRESENTED BY

BTNGROUP
CONFERENCES

PUBLISHERS OF

BTN
BUSINESS TRAVEL NEWS

Travel Procurement

**the
beat**

Rank	City	Hotel in USD	Taxi from Airport to City Center in USD	Food in USD	Total in USD
39	Abu Dhabi	\$152.20	\$43.56	\$126.42	\$322.18
23	Amsterdam	\$193.22	\$53.14	\$119.46	\$365.83
50	Antwerp	\$141.13	\$33.74	\$116.16	\$291.03
33	Athens	\$185.29	\$35.69	\$115.65	\$336.63
32	Auckland	\$218.11	\$35.87	\$83.00	\$336.97
99	Bangalore	\$123.20	\$4.82	\$50.84	\$178.86
89	Bangkok	\$131.73	\$7.85	\$72.41	\$211.99
26	Barcelona	\$187.46	\$41.64	\$132.96	\$362.06
11	Basel	\$232.82	\$48.72	\$125.13	\$406.68
61	Beijing	\$141.49	\$13.30	\$118.08	\$272.87
54	Berlin	\$145.90	\$31.32	\$110.52	\$287.75
56	Birmingham	\$146.83	\$59.56	\$78.45	\$284.84
96	Bogota	\$138.69	\$8.34	\$40.70	\$187.73
78	Bratislava	\$128.19	\$9.52	\$93.33	\$231.04
20	Brussels	\$183.80	\$46.40	\$146.63	\$376.83
86	Bucharest	\$135.58	\$6.68	\$72.47	\$214.73
81	Budapest	\$136.44	\$2.63	\$86.02	\$225.09
63	Buenos Aires	\$156.41	\$23.23	\$86.62	\$266.26
100	Cairo	\$134.95	\$4.47	\$34.08	\$173.50
71	Calgary	\$141.24	\$28.90	\$78.30	\$248.44
98	Cape Town	\$127.18	\$11.67	\$47.91	\$186.75
17	Cologne	\$164.80	\$112.54	\$106.89	\$384.24
16	Copenhagen	\$221.25	\$47.86	\$121.03	\$390.14
58	Doha	\$166.91	\$9.16	\$107.76	\$283.83
44	Dubai	\$173.94	\$17.15	\$117.60	\$308.70
34	Dublin	\$219.30	\$30.97	\$82.04	\$332.31
52	Dusseldorf	\$150.93	\$30.43	\$107.98	\$289.34
35	Edinburgh	\$192.10	\$49.19	\$88.50	\$329.79
36	Frankfurt	\$177.21	\$52.66	\$99.60	\$329.46
5	Geneva	\$239.40	\$63.53	\$133.89	\$436.82
57	Glasgow	\$160.95	\$44.65	\$78.85	\$284.44
38	Grenoble	\$126.87	\$102.88	\$95.91	\$325.66
73	Guangzhou	\$129.81	\$17.39	\$97.41	\$244.60
95	Guatemala City	\$121.57	\$11.72	\$60.27	\$193.55
93	Guayaquil	\$116.93	\$5.00	\$82.71	\$204.64
41	The Hague	\$157.10	\$60.35	\$97.60	\$315.05
46	Hamburg	\$154.64	\$44.65	\$99.74	\$299.03
75	Hanoi	\$162.99	\$14.30	\$60.68	\$237.97
27	Helsinki	\$190.22	\$56.13	\$112.05	\$358.40
10	Hong Kong	\$250.50	\$36.12	\$136.85	\$423.47
83	Istanbul	\$123.05	\$36.37	\$60.69	\$220.11
94	Jakarta	\$135.05	\$9.37	\$59.67	\$204.08
87	Johannesburg	\$135.18	\$40.25	\$38.95	\$214.37
67	Kiev	\$205.12	\$10.30	\$42.45	\$257.87
90	Kuala Lumpur	\$111.68	\$22.13	\$75.53	\$209.35
12	Kuwait City	\$229.96	\$69.49	\$103.79	\$403.25
64	Lagos	\$211.23	\$1.66	\$51.62	\$264.51
55	Lima	\$187.43	\$27.84	\$72.13	\$287.39
43	Lisbon	\$164.23	\$26.17	\$118.57	\$308.98
4	London	\$269.88	\$108.64	\$115.47	\$493.99
25	Luxembourg	\$214.65	\$40.45	\$108.46	\$363.56

Rank	City	Hotel in USD	Taxi from Airport to City Center in USD	Food in USD	Total in USD
28	Lyon	\$166.18	\$86.85	\$101.32	\$354.34
40	Madrid	\$175.27	\$40.45	\$99.91	\$315.63
59	Manchester	\$167.24	\$39.88	\$75.56	\$282.69
80	Manila	\$170.39	\$2.90	\$54.36	\$227.65
37	Melbourne	\$204.98	\$29.33	\$94.06	\$328.37
84	Mexico City	\$138.82	\$15.03	\$61.94	\$215.80
8	Milan	\$212.08	\$113.02	\$100.68	\$425.77
70	Montreal	\$147.88	\$31.54	\$72.67	\$252.09
65	Moscow	\$157.24	\$19.53	\$85.18	\$261.95
92	Mumbai	\$132.33	\$7.13	\$67.26	\$206.72
13	Munich	\$177.12	\$92.15	\$126.37	\$395.64
2	Muscat	\$203.40	\$191.42	\$126.55	\$521.36
62	Nairobi	\$195.21	\$7.13	\$69.09	\$271.43
88	New Delhi	\$131.35	\$4.42	\$76.67	\$212.43
53	Nice	\$150.63	\$39.26	\$99.34	\$289.23
21	Osaka-Kobe	\$209.35	\$55.66	\$106.69	\$371.70
6	Oslo	\$197.57	\$103.66	\$130.10	\$431.34
68	Ottawa	\$155.42	\$21.21	\$78.76	\$255.39
77	Panama City	\$126.04	\$37.00	\$69.67	\$232.71
9	Paris	\$223.10	\$57.10	\$145.34	\$425.55
42	Prague	\$148.92	\$31.24	\$133.84	\$313.99
66	Quito	\$146.09	\$37.00	\$76.00	\$259.09
82	Rio de Janeiro	\$113.91	\$26.12	\$81.02	\$221.04
22	Riyadh	\$213.63	\$17.60	\$139.30	\$370.54
18	Rome	\$197.51	\$65.43	\$120.85	\$383.80
72	Rotterdam	\$146.24	\$11.90	\$87.04	\$245.18
91	San Jose	\$127.61	\$24.03	\$56.06	\$207.70
47	San Juan	\$189.81	\$25.00	\$83.08	\$297.89
85	San Salvador	\$131.52	\$28.00	\$55.92	\$215.44
69	Santiago	\$162.95	\$23.31	\$68.52	\$254.78
74	Sao Paulo	\$134.41	\$36.87	\$69.44	\$240.73
14	Seoul	\$199.08	\$48.04	\$146.61	\$393.72
24	Shanghai	\$158.73	\$28.57	\$177.37	\$364.67
60	Shenzhen	\$130.49	\$19.01	\$127.82	\$277.32
29	Singapore	\$197.75	\$17.18	\$139.27	\$354.20
79	St. Petersburg	\$157.08	\$7.18	\$65.68	\$229.94
31	Stavanger	\$172.53	\$38.85	\$131.88	\$343.26
19	Stockholm	\$184.89	\$66.52	\$130.00	\$381.41
48	Stuttgart	\$143.64	\$38.38	\$115.22	\$297.24
15	Sydney	\$234.26	\$36.65	\$119.38	\$390.30
30	Taipei	\$198.38	\$36.65	\$110.66	\$345.68
7	Tel Aviv	\$272.75	\$43.02	\$113.68	\$429.45
97	Tianjin	\$97.14	\$6.65	\$83.78	\$187.58
1	Tokyo	\$250.77	\$205.40	\$123.47	\$579.63
51	Toronto	\$160.33	\$35.99	\$94.57	\$290.89
49	Vancouver	\$175.38	\$25.70	\$90.37	\$291.46
45	Vienna	\$157.42	\$47.98	\$102.57	\$307.97
76	Warsaw	\$139.58	\$8.79	\$85.52	\$233.90
3	Zurich	\$264.72	\$62.25	\$179.29	\$506.26

Hotel average daily rates do not include taxes & are based on BCD Travel bookings between January & November 2017 on a rolling conversion from local currency to U.S. dollars on the date paid.

STRATEGIC MEETINGS SUMMIT

LONDON
11 APRIL 2018

ETC.VENUES COUNTY HALL | LONDON

Don't miss the inaugural Strategic Meetings Summit London!

Brought to you by the publishers of *Business Travel News* and *Travel Procurement*, this one-day conference series (4th Annual New York, 2nd Annual Chicago, San Francisco and London) will unite over 75 top corporate practitioners of strategic meetings management, including senior-level meetings, marketing, procurement and travel executives.

Share experiences, challenges and solutions with your peers and focus on content including:

- Leveraging travel and small meetings
- Comparing small meetings technology
- Elevator pitching and highlighting SMM success



YOUNES BELKADI
Senior Program Mgr -Travel/
Venue Source, MICROSOFT



NICOLA PARSONS
Global Head of Travel,
Meetings & Events, AIG



SAMANTHA VAN LEEUWEN
Head of UK Hotels
and Venues
PWC



SARIKA KINASH
EMEIA Meeting & Events
Operations Manager
EY

REGISTER TODAY!

www.BTNGroupConferences.com/SMSLondon

DIAMOND SPONSOR

etc.venues
www.etcvenues.co.uk

GOLD SPONSOR

CWT
Meetings&Events

BRONZE SPONSORS

MEETINGS & EVENTS

BCD meetings & events

DELTA

EDWARDIAN HOTELS
LONDON

Eved

HRG

HRS
Global Hotel Solutions

IHG

PRESENTED BY

BTNGROUP
CONFERENCES

PUBLISHERS OF

BTN
BUSINESS TRAVEL NEWS

TravelProcurement

the beat

Rank	City	Breakfast in USD	Lunch in USD	Dinner in USD	Total in USD
1	Zurich	\$39.11	\$61.48	\$78.70	\$179.29
2	Shanghai	\$29.18	\$43.57	\$104.63	\$177.37
3	Brussels	\$31.13	\$42.83	\$72.67	\$146.63
4	Seoul	\$39.30	\$63.99	\$43.31	\$146.61
5	Paris	\$39.06	\$48.68	\$57.60	\$145.34
6	Riyadh	\$35.02	\$50.04	\$54.24	\$139.30
7	Singapore	\$30.26	\$38.86	\$70.14	\$139.27
8	Hong Kong	\$31.51	\$48.21	\$57.13	\$136.85
9	Geneva	\$35.86	\$48.50	\$49.53	\$133.89
10	Prague	\$27.78	\$39.72	\$66.34	\$133.84
11	Barcelona	\$28.80	\$37.03	\$67.13	\$132.96
12	Stavanger	\$24.31	\$42.15	\$65.42	\$131.88
13	Oslo	\$29.74	\$47.28	\$53.09	\$130.10
14	Stockholm	\$22.98	\$45.39	\$61.63	\$130.00
15	Shenzhen	\$28.65	\$42.50	\$56.67	\$127.82
16	Muscat	\$41.18	\$44.00	\$41.37	\$126.55
17	Abu Dhabi	\$32.82	\$44.05	\$49.55	\$126.42
18	Munich	\$40.45	\$39.23	\$46.69	\$126.37
19	Basel	\$32.11	\$37.86	\$55.16	\$125.13
20	Tokyo	\$25.94	\$41.71	\$55.81	\$123.47
21	Copenhagen	\$28.99	\$44.31	\$47.72	\$121.03
22	Rome	\$37.77	\$46.40	\$36.68	\$120.85
23	Amsterdam	\$28.06	\$39.26	\$52.15	\$119.46
24	Sydney	\$24.12	\$38.82	\$56.44	\$119.38
25	Lisbon	\$34.30	\$38.47	\$45.80	\$118.57
26	Beijing	\$30.84	\$35.40	\$51.84	\$118.08
27	Dubai	\$32.63	\$35.17	\$49.80	\$117.60
28	Antwerp	\$23.89	\$32.72	\$59.55	\$116.16
29	Athens	\$27.51	\$40.47	\$47.67	\$115.65
30	London	\$35.44	\$40.21	\$39.82	\$115.47
31	Stuttgart	\$30.60	\$43.97	\$40.65	\$115.22
32	Tel Aviv	\$31.25	\$42.49	\$39.94	\$113.68
33	Helsinki	\$28.75	\$42.81	\$40.49	\$112.05
34	Taipei	\$25.42	\$38.28	\$46.95	\$110.66
35	Berlin	\$35.79	\$39.53	\$35.20	\$110.52
36	Luxembourg	\$28.16	\$30.93	\$49.37	\$108.46
37	Dusseldorf	\$34.90	\$37.38	\$35.71	\$107.98
38	Doha	\$26.66	\$25.99	\$55.11	\$107.76
39	Cologne	\$30.24	\$37.22	\$39.44	\$106.89
40	Osaka-Kobe	\$20.50	\$24.95	\$61.24	\$106.69
41	Kuwait City	\$25.20	\$36.40	\$42.19	\$103.79
42	Vienna	\$31.13	\$33.11	\$38.33	\$102.57
43	Lyon	\$28.95	\$35.69	\$36.68	\$101.32
44	Milan	\$32.47	\$26.97	\$41.24	\$100.68
45	Madrid	\$26.25	\$28.06	\$45.60	\$99.91
46	Hamburg	\$29.54	\$35.40	\$34.80	\$99.74
47	Frankfurt	\$31.61	\$31.92	\$36.07	\$99.60
48	Nice	\$26.97	\$36.09	\$36.29	\$99.34
49	The Hague	\$26.17	\$26.72	\$44.71	\$97.60
50	Guangzhou	\$25.59	\$36.32	\$35.50	\$97.41
	Total Average	\$24.68	\$31.39	\$40.12	\$96.20
51	Grenoble	\$19.19	\$31.90	\$44.81	\$95.91
52	Toronto	\$20.11	\$26.17	\$48.29	\$94.57

Rank	City	Breakfast in USD	Lunch in USD	Dinner in USD	Total in USD
53	Melbourne	\$20.66	\$26.82	\$46.58	\$94.06
54	Bratislava	\$28.35	\$22.05	\$42.93	\$93.33
55	Vancouver	\$21.35	\$29.31	\$39.71	\$90.37
56	Edinburgh	\$23.45	\$29.40	\$35.64	\$88.50
57	Rotterdam	\$25.08	\$28.65	\$33.31	\$87.04
58	Buenos Aires	\$26.58	\$30.37	\$29.67	\$86.62
59	Budapest	\$26.97	\$32.87	\$26.18	\$86.02
60	Warsaw	\$25.30	\$29.27	\$30.94	\$85.52
61	Moscow	\$25.92	\$33.75	\$25.51	\$85.18
62	Tianjin	\$21.34	\$26.95	\$35.49	\$83.78
63	San Juan	\$20.83	\$22.50	\$39.75	\$83.08
64	Auckland	\$15.96	\$26.40	\$40.64	\$83.00
65	Guayaquil	\$20.88	\$28.05	\$33.78	\$82.71
66	Dublin	\$22.01	\$25.57	\$34.46	\$82.04
67	Rio de Janeiro	\$21.53	\$22.25	\$37.23	\$81.02
68	Glasgow	\$20.05	\$19.85	\$38.95	\$78.85
69	Ottawa	\$16.10	\$24.18	\$38.48	\$78.76
70	Birmingham	\$20.75	\$27.75	\$29.94	\$78.45
71	Calgary	\$17.48	\$22.34	\$38.48	\$78.30
72	New Delhi	\$15.07	\$24.81	\$36.79	\$76.67
73	Quito	\$17.67	\$25.67	\$32.67	\$76.00
74	Manchester	\$22.07	\$24.56	\$28.93	\$75.56
75	Kuala Lumpur	\$18.01	\$23.17	\$34.35	\$75.53
76	Montreal	\$15.64	\$20.90	\$36.14	\$72.67
77	Bucharest	\$21.28	\$25.30	\$25.89	\$72.47
78	Bangkok	\$23.43	\$19.97	\$29.01	\$72.41
79	Lima	\$20.98	\$22.09	\$29.05	\$72.13
80	Panama City	\$16.83	\$21.67	\$31.17	\$69.67
81	Sao Paulo	\$20.10	\$17.64	\$31.70	\$69.44
82	Nairobi	\$23.75	\$25.47	\$19.87	\$69.09
83	Santiago	\$15.92	\$23.89	\$28.71	\$68.52
84	Mumbai	\$16.87	\$26.52	\$23.86	\$67.26
85	St. Petersburg	\$15.08	\$22.14	\$28.46	\$65.68
86	Mexico City	\$12.31	\$15.35	\$34.29	\$61.94
87	Istanbul	\$20.01	\$21.31	\$19.37	\$60.69
88	Hanoi	\$19.14	\$23.31	\$18.22	\$60.68
89	Guatemala City	\$17.24	\$18.55	\$24.47	\$60.27
90	Jakarta	\$17.42	\$21.72	\$20.52	\$59.67
91	San Jose	\$14.47	\$19.20	\$22.38	\$56.06
92	San Salvador	\$15.58	\$17.50	\$22.83	\$55.92
93	Manila	\$15.14	\$18.50	\$20.72	\$54.36
94	Lagos	\$15.72	\$16.88	\$19.03	\$51.62
95	Bangalore	\$12.13	\$17.82	\$20.89	\$50.84
96	Cape Town	\$12.51	\$16.15	\$19.25	\$47.91
97	Kiev	\$13.99	\$16.38	\$12.08	\$42.45
98	Bogota	\$12.31	\$12.89	\$15.51	\$40.70
99	Johannesburg	\$12.83	\$13.20	\$12.91	\$38.95
100	Cairo	\$9.90	\$11.74	\$12.45	\$34.08

Breakfast is based on a continental breakfast; lunch on a sandwich, salad & nonalcoholic drink; & dinner on a salad, nonalcoholic drink & fish, chicken or beef. In some cities, researchers focused on hotel restaurants in order to find these items. New York University School of Professional Studies Jonathan M. Tisch Center for Hospitality and Tourism students called restaurants in January & February 2018 to collect food prices in local currencies. For cities with populations of more than 1.5 million, they surveyed 12 restaurants for each lunch & dinner. In smaller cities, they called six. No gratuity or tax is included. Costs were converted to U.S. dollars using the Dec. 2, 2017, conversion rate.

Change your mind. Change your flight. Zero change fees.

At Southwest Airlines®, we know flight changes happen. Whether it's a sudden meeting change or extending a trip after the job is done, we won't charge any change fees so you can go about your business as usual. Oh, and two bags fly free.* We call that Transfarency.® Learn more at [Southwest.com/corporatetravel](https://www.southwest.com/corporatetravel).

Southwest®
Corporate Travel

Fare difference may apply. First and second checked bags. Weight and size limits apply.



SOME BUSINESS REQUIRES IT

On some business trips, any car will do—but for others, there's the **Premier Selection** from National Car Rental.

Choose from sought-after luxury vehicles like the Infiniti Q50, BMW 4 Series convertible, Audi A6, and more.

The vehicles are available for an additional fee, but won't cost any additional time—simply walk up and take the car you want to the exit gate.

For more information go to nationalcar.com/premierselection



 **National**
Car Rental

Go National. Go Like a Pro.

©2017 National Car Rental.