

# BTN

BUSINESS TRAVEL NEWS

March 21, 2016

# 2016 CORPORATE TRAVEL INDEX

Business travel per diems for 200 cities worldwide, plus:

- Hotel, car rental & food breakdowns
- Region-by-region analysis

Sponsored in part by

**UNITED**



A STAR ALLIANCE MEMBER 



UNITED



A STAR ALLIANCE MEMBER 

on-time arrival.  
guaranteed.

Introducing the United® Global Performance Commitment, our industry-leading promise that we will get you and your team where they need to be, on time, across our entire network. We're committed to delivering a best-in-class operation and we've invested in the product, planes and people to do so. If we fail to meet our performance goals, we'll compensate eligible corporate accounts accordingly. To learn more about the United Global Performance Commitment, visit [united.com/performancecommitment](http://united.com/performancecommitment).

fly the friendly skies®

**DAVID MEYER**  
Editorial Director  
(646) 380-6246  
dmeyer@thebtngroup.com

**ELIZABETH WEST**  
Editor-in-Chief  
(732) 494-1955  
ewest@thebtngroup.com

**JAY BOEHMER**  
Editor-in-Chief, *The Beat*  
(646) 638-6249  
jboehmer@thebtngroup.com

**AMANDA METCALF**  
Managing Editor  
(646) 380-6248  
ametcalf@thebtngroup.com

**MICHAEL B. BAKER**  
Senior Editor, Transportation  
(646) 380-6250  
mbaker@thebtngroup.com

**JoANN DeLUNA**  
Associate Editor, Payment & Expense  
(646) 380-6268  
jdeluna@thebtngroup.com

**JULIE SICKEL**  
Associate Editor, Lodging  
(646) 380-6264  
jsickel@thebtngroup.com

**CHRIS DAVIS**  
Contributing Editor

**JENNIFER RUF**  
Contributing Art Director

**MICHELE GARTH**  
Production Manager  
(201) 902-1930  
mgarth@ntmllc.com

**LISA GONZALES**  
Production Specialist  
(201) 902-1927  
lgonzales@ntmllc.com

**GAYLE GRAIZZARO**  
Production Specialist  
(201) 902-1914  
ggrazzaro@ntmllc.com

**KWAF0 ANOFF**  
Director of Circulation  
(201) 901-2103  
kanoff@ntmllc.com

**SUBSCRIPTION SERVICES**  
Toll Free: (800) 869-6882  
Business Travel News  
PO Box 47655  
Plymouth, MN 55447  
nbtn@omeda.com

**LIST RENTAL & REPRINTS**  
DANIELLE ZABORSKI, MeritDirect  
(914) 368-1090  
dzaborski@meritdirect.com

**REPRINTS OR COPYRIGHT PERMISSION**  
BRETT PETILLO, Wright's Media  
(877) 652-5295  
bpetillo@wrightsmedia.com

**BTN EDITORIAL & SALES OFFICES**

116 W. 32nd St., 14th Floor  
New York, NY 10001



100 Lighting Way, 2nd Floor  
Secaucus, NJ 07094  
www.northstartravelmedia.com

© All Rights Reserved

# BTN's 2016 CORPORATE TRAVEL INDEX

## ANALYSIS

- 6** Limited Hotel Supply Shoves U.S. Per Diems Up
- 8** Oil Prices & Political Unrest Drove Down Per Diems in the Americas
- 9** What a Dollar Buys in Asia
- 10** Strong U.S. Dollar Lowered EMEA Business Travel Spending

## U.S. CITY PER DIEMS

- 12** Ranked
- 14** Alphabetized
- 16** Hotel Cost Breakdown
- 18** Car Rental Cost Breakdown
- 20** Food Cost Breakdown

## NON-U.S. CITY PER DIEMS

- 22** Ranked
- 24** Alphabetized
- 25** Hotel Cost Breakdown
- 26** Food Cost Breakdown

## METHODOLOGY

For *BTN's* 2016 Corporate Travel Index, the 32nd annual, BDC Travel's Advito provided the average hotel and car rental costs paid by BCD corporate clients, *BTN* collected hotel taxes and surcharges from hotels, and eight New York University School of Professional Studies Advanced Research Seminar students, led by academic chair and clinical assistant professor Lynn Minnaert, called restaurants in October and November to gather meal prices. For U.S. cities with an annual gross domestic product above \$95 billion, researchers surveyed three chains, six independent restaurants identified via TripAdvisor and three hotel restaurants for breakfast. They called six chains and six independent restaurants for each lunch and dinner. For smaller cities, they surveyed two independent restaurants and one hotel restaurant for breakfast and three chains and three independent restaurants for each lunch and dinner. Sample chains for breakfast include Denny's, IHOP and Starbucks; for lunch Chili's, Applebee's, Panera Bread and Olive Garden; and for dinner LongHorn Steakhouse and Olive Garden. For non-U.S. cities with populations of more than 1.5 million, they surveyed 12 restaurants for each lunch and dinner, and for smaller non-U.S. cities, they called six.

Business Travel News (USPS 0728-870, ISSN 8750-3670) March 21, 2016 Issue 797 Vol. 33, No. 4. Business Travel News is published monthly except semi-monthly in March, April, June, July, September and October by Northstar Travel Media, LLC, 100 Lighting Way, Secaucus, NJ 07094 (201) 902-2000, and is distributed free of charge to qualified corporate travel buyers and travel agents specializing in business travel in the United States and Canada. The cost of a print subscription to non-qualified subscribers is \$129 in the U.S.; \$142 in Canada and Mexico; and \$210 in other foreign locations; the cost of a digital edition subscription is \$65; payable in advance in U.S. dollars. Registered for GST as Northstar Travel Media USA GST No. 264513185. Canadian GST #123397457. Periodicals postage paid at Newark, NJ, and additional mailing offices. Business Travel News is a trademark owned exclusively by Northstar Travel Media. Copyright © 2016 by Northstar Travel Media, LLC. Reproduction of this magazine, in whole or in part, is prohibited unless authorized by the publisher. Editorial and advertising offices: 100 Lighting Way, Secaucus, NJ 07094. For all circulation inquiries, including new subscriptions, renewals, cancellations, changes of address and problems with missed deliveries, contact customer service by mail at Business Travel News, P.O. Box 47655, Plymouth, MN 55447; by phone at (800) 869-6882; fax at (866) 658-6156; e-mail at [btn@kmpsgroup.com](mailto:btn@kmpsgroup.com); or website at <http://eforms.kmpsgroup.com/jointforms/Forms/Subscription.aspx?pubcode=BTN>. POSTMASTER: Send change of address to Business Travel News, P.O. Box 47655, Plymouth, MN 55447. Printed in the USA.

## SPONSOR LETTER



A STAR ALLIANCE MEMBER



To our business travel colleagues:

Welcome to the 2016 Corporate Travel Index. United is delighted to partner with *Business Travel News* in bringing you this valuable resource which can assist in budget forecasting and travel to top business destinations around the world.

When it comes to air travel, the United team understands the importance of helping our business partners control costs, be productive and ensure your travelers receive great service. That's why we are very excited about the launch of United's Global Performance Commitment—our industry-leading promise to get you and your colleagues where they need to be, on time, across our entire network. If we fail to beat one of our major U.S. network competitors in on-time performance and completion factor, we'll compensate eligible corporate accounts accordingly. This commitment builds upon the many flyer-friendly initiatives already underway at United including:

- Expanding our unparalleled, comprehensive network even further with new international routes
- “Mobilizing” front-line employees with Apple iPhones that allow them to quickly and efficiently solve customer issues
- Investing over \$100 million in our United Club locations
- Enhancing Wi-Fi and inflight entertainment on mainline and regional fleets with more content
- Installing new domestic United First seats with enhanced ergonomics, six-way adjustable headrests, a spot for laptops, in tray tablet holder, and granite extendable cocktail tables
- Taking delivery of new Boeing 737 NGs, 777s and 787s
- Offering free snacks throughout the day in United Economy across our North America network, expanding complimentary meals in Economy on international flights and engaging world-renowned chefs to help design new, premium cabin meals

On behalf of United's Worldwide Sales team, thank you for your support and trust. We know you have many choices when it comes to selecting a preferred airline partner, and we are working hard every day to earn your business.

We look forward to welcoming you into the Friendly Skies soon.

Dave Hilfman  
Senior Vice President, Worldwide Sales  
United Airlines

# BTNGROUP

Louis Magliaro, Vice President and Group Publisher  
973.769.0028, lmagliaro@thebtngroup.com

## SALES

**Anthony Carnevale**  
Associate Publisher  
201.902.1976  
acarnevale@thebtngroup.com

**Edie Garfinkle**  
Advertising Director  
720.542.9371  
egarfinkle@thebtngroup.com

**Lindsay Straub**  
Regional Sales Manager  
646.380.6274  
lstraub@thebtngroup.com

**Debbie Anderson**  
Hawaii  
808.739.2200  
debbieanderson@dmhawaii.com

**Juan Martinez Dugay**  
**Paloma Martinez**  
Mexico  
(011) 52-55 2122-3900  
jmdugay@towmar.com  
pmartinez@towmar.com

**Michiko Kawano**  
Japan  
+81-3-3661-6138  
kawano-pbi@gol.com

**Jung Won Suh**  
Korea  
+82-2-3275-5969

**Lavender Tan**  
Singapore  
(65) 9752 8613  
lvtan@singnet.com.sg

## CONTENT SOLUTIONS

**Mary Ann McNulty**  
Director, Content Solutions  
630.519.4510  
mmculty@thebtngroup.com

## MARKETING & EVENTS

**Max Bzdyk**  
Marketing Events and Sales Assistant  
201.902.1924  
mmbzdyk@ntmlc.com

**Mariza Moreira**  
Group Design Manager  
201.902.1965  
mmoreira@ntmlc.com

## LIST RENTAL

**Danielle Zaborski**  
MeritDirect  
914.368-1090  
dzaborski@meritdirect.com

## REPRINTS

**Brett Petillo**  
Wright's Media  
(877) 652-5295  
bpetillo@wrightsmedia.com

## SUBSCRIPTION SERVICES

800.869.6882  
btn@kmpsgroup.com  
Business Travel News  
PO Box 47655  
Plymouth, MN 55447



**Thomas L. Kemp**, Chairman and Chief Executive Officer

**Lisa Cohen**, Chief Financial Officer

**Robert G. Sullivan**, President, Travel Group

**Thomas Cintonino**, Executive Vice President, Digital Media

**David Blansfield**, Executive Vice President and Group Publisher

**Lori Cioffi**, Senior Vice President and Editorial Director

**Arnie Weissmann**, Senior Vice President and Editorial Director

**Janine L. Bavoso**, Senior Vice President, Human Resources

**Roberta Muller**, Senior Vice President, Product Development and Production

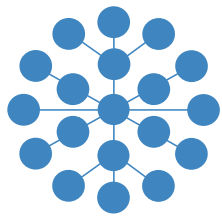
**Michelle Rosenberg**, Vice President, Marketing Solutions

**Sheila Rice**, Vice President, Content Licensing

**Richard Mastropietro**, Vice President, IT Infrastructure and Operations

**Elizabeth Koesser**, Vice President, Database Products

3<sup>RD</sup> ANNUAL



innovate

For the advancement of business travel

**SAVE THE DATE**

**September 27-28, 2016**

**New York Marriott Marquis  
New York City**

Join 300 of your travel industry peers at the third annual Innovate conference, combining cutting-edge buyer education, travel supplier innovation and industry networking for corporate travel and procurement professionals.

Be part of the solution at Innovate 2016.

**[BTNIinnovate.com](http://BTNIinnovate.com)**

Presented By

**BTNGROUP**

# Limited Hotel Supply Shoves U.S. Per Diems Up

## BY MICHAEL B. BAKER

Steep hikes in hotel rates pushed the average U.S. per diem for hotel, rental car and dining costs up 3.9 percent in 2015, and the climb shows no sign of slowing this year.

Across 100 U.S. cities, those three categories cost travel buyers \$318.80 per day last year, up from \$306.91 in 2014, according to *BTN's* Corporate Travel Index (see page 12). For the third year in a row, San Francisco was the most expensive city for U.S. business travelers, as its average per diem rose 7.4 percent to \$547.34. New York and Boston also surpassed \$500.

## HOTEL RATES IN 2015

The average cost of a room night for corporate travelers increased 5.6 percent year over year to \$172.80 (see page 16), but rates grew by a larger percentage in 44 of the 100 U.S. markets in the Corporate Travel Index. Seventeen cities experienced double-digit increases, including Boston (14.3 percent), Chicago (14.1 percent), Seattle (14 percent) and Los Angeles (15.7 percent). Detroit outpaced them all with a 22.5 percent rise as the city builds back from its 2013 bankruptcy. Allentown, Pa., also had a significant increase, 19.2 percent, but smaller cities are more susceptible to shifts in supply mix, said Advito vice president and principal Bob Brindley. A Renaissance hotel opened in Allentown in early 2015, and that likely pushed average rates up.

Daily hotel costs totaled \$370.78 in San Francisco, but it's still not the most challenging destination, Brindley said. "The southern Bay Area and

Silicon Valley are even crazier than San Francisco. You can't get a room in South Bay, and a lot of clients that have facilities there are really struggling."

For that area, many buyers have switched to dynamic pricing agreements—negotiating

**"It's still a situation where demand continues to grow, not growing like crazy but steady growth, and, except in a few instances, there is little capacity coming into the market. Hotels also have gotten better at using yield-management systems to manage pricing and availability."**

## — ADVITO'S BOB BRINDLEY

a percentage off best available rate—because last room availability agreements hold little value when rooms are scarce, he added.

New York's daily hotel rate for corporate travelers increased a comparatively moderate 7.4 percent to \$327.63, placing it behind both San Francisco and Boston's \$344.18. New York's recent capacity increases have hindered hoteliers' ability to raise rates there, according to Ultramar's 2016 Business Travel Trends Report.

Hotel rates decreased in only 11 of the 100 U.S. Corporate Travel Index cities, seven of those by less than 1 percent.

## Hotel Rates in 2016

In recent earnings calls, executives from Starwood Hotels & Resorts, Marriott International and Hilton Worldwide all reported their corporate negotiated rates for 2016 have increased by mid-single-digit percentages. And while some economic indicators show corporate travel demand could slow, a seller's market appears set to prevail for now.

## CAR RENTAL RATES IN 2015

The average corporate car rental rate changed little in 2015, as suppliers struggled to gain pricing traction. Corporate travelers paid an average \$47.12 per car rental day, up 0.7 percent (see page 18). Most of that pit-

"Airports have built expensive, elaborate rental car facilities and now are passing the cost of those on to rental car passengers," he said.

## Car Rental Rates in 2016

Brindley said average rates likely would increase between 2 and 4 percent, but leisure travelers and small and mid-size companies operating without contracts would bear most of that. Corporate negotiated rates, on the other hand likely will remain flat, he said.

## FOOD COSTS IN 2015

Average daily dining costs in the United States increased 1.9 percent to \$98.74 (see page 20). That's not too far off from a 2.5 percent increase in restaurant prices last year that owed to inflation and rising food costs, according to Dinova founder and CEO Vic Macchio. The corporate dining network reported a 7.1 percent increase in 2015 spending, including a 4.5 percent jump in transactions and a 3.8 percent rise in average check value.

Corporate daily dining costs in Santa Barbara, Calif., lurched upward almost 26.9 percent to \$131.77, pushing it past import-dependent Honolulu, where costs shrunk 1.2 percent, as the most expensive city in the United States for dining. Costs also rose in Washington, D.C., San Francisco, Hartford and Las Vegas, pushing them all above New York, where meal costs grew just 0.1 percent.

## Food Costs in 2016

The National Restaurant Association projects \$782.7 billion in sales this year, up 5 percent. "Outside of small pockets here and there, the environment is quite robust," Macchio said. ■

# BUSINESS TRAVEL INNOVATION STARTS WITH DELTA EDGE.

Only Delta Edge™ offers a suite of premium benefits customized for your company, bringing you beyond-contract value and innovations you won't get from another airline partner. It's part of our commitment to deliver unmatched service and push corporate travel to the next level. That's how we're building our business around the needs of yours.

To learn more, talk to your Delta Sales Account Executive or visit [DELTA.COM/EDGE](http://DELTA.COM/EDGE).



KEEP CLIMBING



Delta Edge is available to customers with a valid Delta Corporate Sales Agreement.

# Oil Prices & Political Unrest Drove Down Per Diems in the Americas

BY JOANN DELUNA

In the Americas in 2015, per diems dropped by double-digit percentages in 13 of the 19 non-U.S. cities represented in *BTN's* Corporate Travel Index (see page 22). Per diems in Venezuela's capital city of Caracas, however, kept rising, as they did in El Salvador's San Salvador and Costa Rica's San Jose. Caracas also happens to be the only Americas city in the top 50 of all non-U.S. cities, and it's the most expensive one at that, at US \$1,702.44 based on the Dec. 1, 2015, exchange rate.

As oil prices dropped last year, hotel prices in countries dependent on oil declined, as well, according to Carson Wagonlit Travel director of Americas hotel solutions Eric Jongeling. "The more heavily [a country] is dependent on oil, the more decrease you're seeing in [the average daily rate]."

He added, "The U.S. dollar strengthened significantly versus the Canadian dollar and that's having a big impact across the board, but the real driver is due to the reliance on oil." Average hotel costs declined 9 percent in each of the five Canadian cities in the Corporate Travel Index, and thus per diems in each also decreased in U.S. currency. Montreal fell the most, 20 percent, followed by 13 percent in Vancouver and 12 percent in Calgary.

## LATIN AMERICA

Six of the 14 Latin American cities experienced per-diem drops greater than 20 percent. San Juan, Puerto Rico's 35 percent, the biggest decline, owed to lower hotel and food costs. An average room night in that city was \$112, a 44 percent drop



Hotel rates have fallen in countries whose economies depend on oil.

from 2014 (see page 25), and the average cost of three meals decreased to \$64 from \$86 (see page 26). In Buenos Aires, 40 percent lower hotel costs reduced the per diem 33 percent to \$198. Likewise, a room night in Rio de Janeiro fell 27 percent to \$139, spurring the city's per diem to decline 32 percent.

While Caracas' hotel rates dropped from \$690 to \$510, a food shortage propelled daily meal expenses to twice the cost of a hotel, boosting the per diem 28 percent. "Venezuela is its own monster," said Jongeling. "Even though they are dependent on oil, that's not offsetting the impact of inflation for travel there." The country continues to be plagued by high inflation rates—nearly 200 percent in 2015—falling oil prices, a contraction in gross domestic

product, a shortage of consumer goods and a malfunctioning government, according to FocusEconomics.

San Salvador, like Caracas saw its per diem increase by a double-digit percentage in both local and U.S. currencies: 13 percent in local money and 14 percent in U.S. dollars. San Salvador's bump came from a 31 percent hotel rate increase, despite a 23 percent decline in food costs.

"The biggest trend in 2015 [for Latin America] was around the political issues that impact pricing," Jongeling said. "We're seeing a trend towards infrastructure improving, more hotels and airports being built and better roads, which will only help them moving forward." Should political problems persist in Latin America, he said,

hotel pricing and per diems will continue to decrease in 2016. "There are still a lot of question marks that need to be resolved before [the area] can see a turnaround economically," he said. "The corruption has diminished the public's confidence. ... If those issues are resolved, there's a lot of opportunity and growth potential!"

Then there's Zika virus. Discovered in Brazil in May 2015, the mosquito-borne disease can cause flu-like symptoms in individuals and birth defects when pregnant women are infected. The World Health Organization has declared Zika a global public health emergency. Jongeling noted, "Travelers are definitely concerned, but we haven't seen too much of [a business travel cost] impact yet traceable to the Zika virus outbreak." ■

# What a Dollar Buys in Asia

BY JAY BOEHMER

United States-based corporate travelers traveled at a discount in 2015, thanks to the U.S. dollar's gain against major Asian currencies, and sustained strength is on tap for 2016. The dollar has been growing in value against the Chinese yuan since the beginning of 2014. Based on exchange rates in early March, \$1 bought 6.5 yuan. An early March Reuters poll of 61 currency experts projected further depreciation in China's currency to 6.7 per dollar within six months and to 6.78 per dollar within 12 months. Meanwhile, the dollar reached its highest value against the Japanese yen in more than a decade, exchanging at 125 yen to \$1 in mid-2015. The 114 to 1 exchange rate in early March remained historically strong.

The relative power of the dollar should only build this year. Against the dollar, Reuters projected, the yen "will slip to 116 in three months, 118 in six months and 120 in a year." The greenback also has gained steam against the Indian rupee and remained historically strong against the Australian dollar based on early March metrics.

Here's what the dollar can buy in Asia.

## JAPAN RISING: TOKYO'S BIG JUMP

A nightly stay in Japan's capital will cost a business traveler US\$225.36, second in Asia only to Hong Kong's \$295.12 (see page 25). Tokyo's average hotel rate rose 6.8 percent in 2015, while Hong Kong's contracted 3.6 percent. While Asia should see stable hotel pricing this year, according to



Based on exchange rates in early March, \$1 bought 6.5 yuan.

travel management company projections, Japan is a notable exception. BCD Travel's Advito projected 2016 hotel rates in Japan to rise as much as 10 percent year over year, according to its March forecast revision. "Occupancy rates are growing, especially for leisure travel, owing to a recovering domestic economy, a depreciating currency and relaxed visa requirements for visitors from Southeast Asia," Advito commented in a prior forecast.

STR Global reported Japan hotels' average daily rate rose 10 percent year over year in January, the 10th consecutive month with a year-over-year percentage increase in the double digits. Japan's hotel occupancy also reached a January record. "A boom in international arrivals and a lack of new supply have served as the driving forces behind hotel performance in Japan," according to STR.

## MERS RATTLED SOUTH KOREA HOTELS

Of all the Asian markets in BTN's Corporate Travel Index, Seoul's per diem (see

page 22) fell the hardest from last year. Average per diem tumbled 35 percent year over year to US\$285.63, when converted to U.S. dollars for each period. Advito attributed pricing weakness there to a slowing economy and growing hotel supply, exacerbated by an outbreak of the Middle East Respiratory Syndrome last spring and summer in South Korea. STR Global reported that hotel demand in South Korea "began to pick up slowly during the fourth quarter of 2015 after several months of significant decreases" stemming from MERS.

For January, STR detected a slight lift in South Korean hotel occupancy, the first rise since September 2014. January 2016 ADR, however, declined slightly year over year. Advito projected an increase of no more than 1 percent in hotel rates in South Korea this year.

## INDIA ON THE CHEAP

Among the 100 non-U.S. cities in the Corporate Travel Index, Bangalore, dubbed the Silicon Valley of India, came in as the most affordable

city for an overnight business trip, inclusive of meals, lodging and miscellaneous expenses. Its US\$167.22 per diem is almost one-third of Hong Kong's, the most expensive city in Asia for yet another year. Mumbai, the financial center of India, posted the third-cheapest international per diem at \$187.88. Though pricier, India capital New Delhi, at \$235.37, still ranked in the bottom quartile of non-U.S. Corporate Travel Index cities.

American Express Global Business Travel forecast healthy business travel demand in India this year, but the nation's "lingering overcapacity" of hotel rooms should mitigate hotel rate increases for business travelers. Meanwhile, financial headlines in 2016 have noted an abrupt spike in India's consumer price index, suggesting a increase in on-the-ground costs this year.

## CHINA'S GLOBAL STATURE

This year, China is poised to overtake the United States as the largest business travel market in the world, according to Global Business Travel Association projections released late last year. Spending on business travel initiated in China was on pace to grow 11.2 percent last year and should grow another 10.7 percent in 2016, based on GBTA's year-over-year projections. Though GBTA now forecasts slower business travel spend in China in 2016 than originally expected, it still anticipates a surge. "China business travel will increase by 61 percent over the next five years, from \$262 billion in 2014 to \$420 billion in 2019," projected GBTA. ■

# Strong U.S. Dollar Lowered EMEA Business Travel Spending

BY CHRIS DAVIS

A stronger U.S. dollar versus the euro and other currencies in Europe, the Middle East and Africa helped business travel per diems decline in the region in 2015, despite healthy demand. Further demand increases and a lack of new hotel supply point to per-diem increases in 2016, but economic and geopolitical instability in Europe casts uncertainty on this year's currency exchange rates and business travel pricing.

For the 59 EMEA cities in *BTN's* Corporate Travel Index, the average per diem declined to \$323 in 2015 from \$362 in 2014. London again served as the most expensive, at about \$554 (see page 22), down from \$576. Once again, Muscat in Oman and the Swiss cities of Geneva and Zurich followed, though the per diems in those cities also declined.

The U.S. dollar's strength against currencies in the region is reflected in the figures. For example, last year's Corporate Travel Index used a conversion rate of €0.80 to US\$1, based on the Dec. 2, 2014, rate, but in this year's index, US\$1 dollar is equivalent to €0.94, as per the Dec. 1, 2015, exchange rate.

The additional bang for the U.S. traveler's buck has continued into 2016, and BCD Travel consultancy Advito has forecast hotel rate increases of not more than 4 percent for the year in the major EMEA regions. Carlson Wagonlit Travel and the Global Business Travel Association offered a similar forecast.



The United Kingdom has a referendum coming up in June to decide whether to remain in the European Union.

## UNCERTAINTY IN EUROPE

Europe harbors healthy demand, steady economic growth and a settling economic outlook in Greece, but the refugee crisis and the United Kingdom's June referendum on its participation in the European Union have added uncertainty to the continent's 2016 pricing outlook, said Advito senior managing consultant Claire Ollivier. "If the U.K. was to get out of the EU, the situation of uncertainty could lead companies to wait and see what is going on, which would probably lead to a business travel [downturn]," she said.

EU member states received more than 1 million requests for asylum from refugees in 2015, but Ollivier said impact on business travel demand and pricing has been limited to Greece, Macedonia and some areas of Croatia, Belgium and France. "There has not yet been a major impact on key business destinations because we don't have that

flow of refugees in the big cities," Ollivier said, "but it might have impact on general perception of safety and security in Europe and ease of travel within the European Union, which might have an impact on business travel."

The November terrorist attacks in Paris "didn't help" demand, she said, citing canceled corporate events. The impact was generally limited to Paris, however, and "things are back to normal right now" on the business transient side, she told *BTN* in March.

## OIL PRICES DAMPEN MIDDLE EAST DEMAND

Low crude oil prices have affected demand and pricing in the Middle East, Ollivier said. While travel from North America and Europe to the Middle East has maintained the pace of recent years, demand from within the Middle East has declined, as has the number of travelers from Ukraine and economically beleaguered Russia, she said.

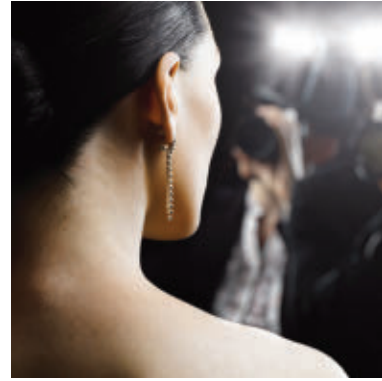
Given the region's investment in new hotel supply over the past few years, prices have held steady. Per diems in Riyadh, Abu Dhabi, Doha and Dubai each declined in 2015, even though those areas' currencies remained constant with the U.S. dollar.

## SHORT SUPPLY DRIVES RATES IN AFRICA

Hotels suitable for business travel remain in short supply in many areas of Africa, despite high demand and development interest from such chains as AccorHotels, Ollivier said. As such, rates can be high particularly in Nigeria, though exchange rates drove the per diem in Lagos down to \$444 in 2015 from \$506 in 2014. According to Ollivier, "It's very difficult to have strong predictions for Africa with the political instability and safety and security concerns, as well as pandemics, which can really change the game in a very short amount of time." ■



# Win your pass to unforgettable experiences



## 12 once-in-a-lifetime experiences reserved for our SuperSellers

We would like to reward our SuperSellers with The Unforgettables; prizes that money can't buy. We're giving away 12 unforgettable experiences to some of the most exclusive events in the world. From front row seats at the most celebrated fashion weeks to VIP hospitality at the world's top football leagues to tickets to the most prestigious film festivals. Every month, one SuperSeller will win. With 12 prizes up for grabs, the more you sell Etihad, the better your chances are. To join our SuperSeller programme or find out more about our amazing rewards, visit [agents.etihad.com](http://agents.etihad.com)



[agents.etihad.com](http://agents.etihad.com) | 

Terms and conditions apply. This promotion is valid for all SuperSeller agents across the Etihad Airways global network for tickets issued from 1 March 2016. Images are for illustrative purposes only. For more details on SuperSeller visit [agents.etihad.com](http://agents.etihad.com)

# U.S. CITY PER DIEMS RANKED

FOR MORE DETAIL, TURN TO:

Hotel Cost Breakdown **16** Car Rental Cost Breakdown **18** Food Cost Breakdown **20**

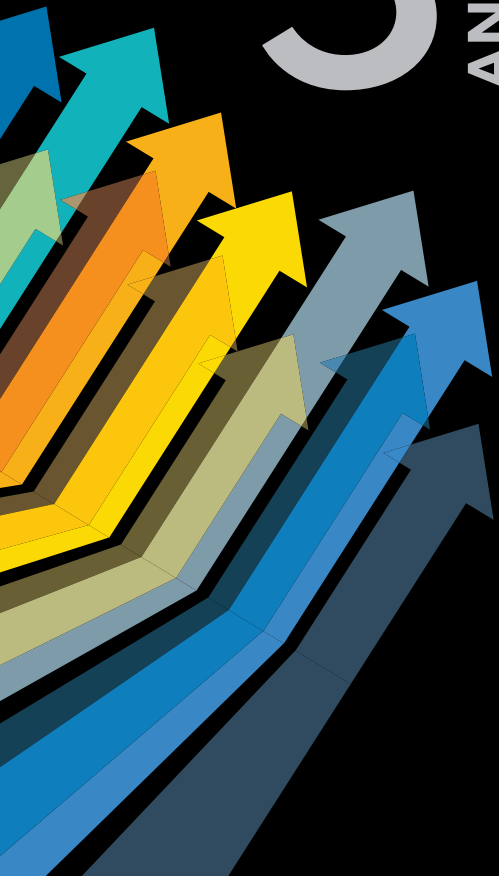
Rank	City	Hotel	Car	Food	Total
1	San Francisco	\$370.78	\$56.01	\$120.55	\$547.34
2	New York	\$327.63	\$77.35	\$118.06	\$523.05
3	Boston	\$344.18	\$62.59	\$95.92	\$502.69
4	Seattle	\$253.22	\$49.40	\$116.25	\$418.88
5	Washington, D.C.	\$245.81	\$44.07	\$121.21	\$411.10
6	Santa Barbara, Calif.	\$224.68	\$52.87	\$131.77	\$409.32
7	Honolulu	\$237.97	\$38.29	\$127.67	\$403.92
8	Los Angeles	\$245.46	\$46.22	\$111.11	\$402.79
9	San Jose, Calif.	\$246.78	\$47.22	\$104.28	\$398.28
10	Hartford, Conn.	\$218.02	\$48.92	\$120.17	\$387.11
11	White Plains, N.Y.	\$217.79	\$59.47	\$105.75	\$383.02
12	Chicago	\$217.76	\$58.22	\$103.92	\$379.90
13	Philadelphia	\$220.47	\$50.46	\$106.36	\$377.29
14	Oakland, Calif.	\$219.91	\$50.48	\$105.57	\$375.95
15	Minneapolis	\$211.00	\$50.70	\$111.59	\$373.29
16	Miami	\$209.51	\$43.68	\$112.24	\$365.43
17	Portland, Ore.	\$200.41	\$50.21	\$113.85	\$364.47
18	Austin, Texas	\$209.49	\$49.96	\$103.80	\$363.25
19	Houston	\$200.12	\$51.75	\$111.31	\$363.17
20	Baltimore	\$207.24	\$49.21	\$103.58	\$360.03
21	Denver	\$197.61	\$46.42	\$111.00	\$355.03
22	New Orleans	\$204.18	\$45.69	\$98.52	\$348.38
23	San Diego	\$192.19	\$45.70	\$110.19	\$348.08
24	Nashville, Tenn.	\$203.32	\$45.65	\$96.46	\$345.43
25	Atlanta	\$187.61	\$47.53	\$110.29	\$345.42
26	Detroit	\$198.59	\$40.47	\$105.15	\$344.21
27	Dallas	\$183.47	\$50.63	\$107.45	\$341.55
28	Las Vegas	\$169.24	\$46.83	\$118.26	\$334.34
29	Providence, R.I.	\$186.32	\$38.49	\$108.82	\$333.63
30	Charleston, S.C.	\$186.35	\$46.26	\$98.17	\$330.78
31	Pittsburgh	\$178.34	\$50.43	\$101.63	\$330.40
32	Charlotte, N.C.	\$184.94	\$46.29	\$98.12	\$329.35
33	Newark, N.J.	\$184.52	\$62.61	\$80.87	\$328.00
34	Fort Lauderdale, Fla.	\$176.22	\$42.50	\$108.11	\$326.82
35	Anaheim, Calif.	\$179.68	\$44.38	\$95.01	\$319.07
	<b>Average Total</b>	<b>\$172.80</b>	<b>\$47.12</b>	<b>\$98.74</b>	<b>\$318.80</b>
36	St. Louis	\$167.04	\$45.90	\$105.77	\$318.71
37	Albany, N.Y.	\$170.06	\$45.41	\$103.03	\$318.50
38	Cleveland	\$172.94	\$47.63	\$95.42	\$316.00
39	Rochester, Minn.	\$164.03	\$52.95	\$98.12	\$315.10
40	Phoenix	\$156.47	\$50.23	\$105.83	\$312.53
41	Memphis, Tenn.	\$155.06	\$48.41	\$108.86	\$312.33
42	Cincinnati	\$173.60	\$45.85	\$92.63	\$312.08
43	Milwaukee	\$160.82	\$46.38	\$103.64	\$310.84
44	Columbus, Ohio	\$161.17	\$50.56	\$94.79	\$306.52
45	Grand Rapids, Mich.	\$169.97	\$43.91	\$92.61	\$306.49
46	Madison, Wis.	\$161.33	\$44.98	\$100.15	\$306.46
47	San Antonio	\$156.65	\$49.89	\$99.80	\$306.34
48	Sacramento, Calif.	\$160.15	\$38.94	\$107.02	\$306.12
49	Savannah, Ga.	\$156.44	\$42.54	\$106.90	\$305.88
50	Greenville, S.C.	\$161.14	\$44.87	\$99.52	\$305.52

Rank	City	Hotel	Car	Food	Total
51	Louisville, Ky.	\$171.22	\$44.06	\$87.43	\$302.71
52	Kansas City, Mo.	\$163.94	\$50.78	\$87.84	\$302.57
53	Little Rock, Ark.	\$143.01	\$58.54	\$100.87	\$302.42
54	Wilmington, Del.	\$179.55	\$36.99	\$85.83	\$302.38
55	Des Moines, Iowa	\$167.62	\$46.99	\$86.09	\$300.69
56	Syracuse, N.Y.	\$161.80	\$44.99	\$91.66	\$298.45
57	Indianapolis	\$157.26	\$50.31	\$90.07	\$297.64
58	Buffalo, N.Y.	\$158.53	\$46.45	\$92.15	\$297.13
59	Omaha, Neb.	\$152.83	\$49.68	\$93.23	\$295.74
60	Sarasota, Fla.	\$149.55	\$49.18	\$95.96	\$294.69
61	Peoria, Ill.	\$149.95	\$44.58	\$98.43	\$292.97
62	Harrisburg, Pa.	\$145.28	\$48.04	\$99.57	\$292.90
63	Tampa, Fla.	\$159.72	\$44.55	\$88.52	\$292.79
64	Richmond, Va.	\$151.64	\$44.85	\$96.22	\$292.71
65	Geensboro, N.C.	\$147.21	\$44.02	\$100.89	\$292.12
66	Salt Lake City	\$161.47	\$47.11	\$83.48	\$292.06
67	Birmingham, Ala.	\$151.18	\$46.92	\$93.28	\$291.37
68	Spokane, Wash.	\$138.89	\$50.35	\$100.30	\$289.54
69	Orlando, Fla.	\$149.96	\$40.05	\$98.83	\$288.84
70	Raleigh, N.C.	\$156.30	\$44.52	\$87.95	\$288.77
71	Springfield, Mo.	\$138.91	\$51.31	\$97.00	\$287.22
72	Rochester, N.Y.	\$141.68	\$45.83	\$99.66	\$287.18
73	Charleston, W.Va.	\$153.66	\$45.47	\$87.94	\$287.07
74	Oklahoma City	\$147.38	\$47.04	\$92.54	\$286.96
75	Columbia, S.C.	\$144.30	\$48.35	\$93.65	\$286.30
76	Fresno, Calif.	\$144.20	\$43.86	\$96.71	\$284.78
77	Wichita, Kan.	\$137.04	\$45.34	\$101.69	\$284.07
78	Toledo, Ohio	\$148.67	\$42.94	\$92.11	\$283.72
79	El Paso, Texas	\$140.45	\$47.04	\$92.72	\$280.21
80	Tallahassee, Fla.	\$139.11	\$42.85	\$94.79	\$276.75
81	Baton Rouge, La.	\$141.55	\$44.80	\$90.17	\$276.52
82	Allentown, Pa.	\$145.24	\$43.67	\$87.15	\$276.06
83	Akron, Ohio	\$144.92	\$41.90	\$88.30	\$275.12
84	Jacksonville, Fla.	\$137.30	\$43.61	\$93.62	\$274.53
85	Corpus Christi, Texas	\$148.03	\$49.80	\$75.68	\$273.51
86	Roanoke, Va.	\$139.00	\$44.05	\$89.77	\$272.82
87	Knoxville, Tenn.	\$138.57	\$43.27	\$90.78	\$272.62
88	Lexington, Ky.	\$135.26	\$42.32	\$93.09	\$270.67
89	Chattanooga, Tenn.	\$139.32	\$44.91	\$85.23	\$269.46
90	Tulsa, Okla.	\$122.51	\$47.37	\$97.84	\$267.73
91	Mobile, Ala.	\$137.37	\$40.24	\$88.37	\$265.98
92	Fort Wayne, Ind.	\$126.97	\$46.13	\$91.25	\$264.35
93	Biloxi, Miss.	\$127.19	\$41.84	\$90.68	\$259.71
94	Dayton, Ohio	\$132.25	\$45.31	\$79.15	\$256.71
95	Albuquerque, N.M.	\$119.12	\$48.29	\$86.44	\$253.85
96	Tucson, Ariz.	\$114.59	\$44.54	\$93.67	\$252.79
97	Shreveport, La.	\$115.94	\$43.88	\$91.49	\$251.31
98	Bakersfield, Calif.	\$128.31	\$41.81	\$81.16	\$251.28
99	Jackson, Miss.	\$128.47	\$44.78	\$77.51	\$250.76
100	Norfolk, Va.	\$118.13	\$41.45	\$88.56	\$248.15

3<sup>RD</sup> ANNUAL

# BUSINESS TRAVEL TRENDS & FORECASTS

WASHINGTON, DC 3.29.16



Business Travel Trends & Forecasts Washington DC is a one-day, buyer-focused conference designed to enhance your corporate travel and meetings program by uniting industry peers and providing a platform for information sharing.

- › Discuss original BTN research into the adoption of advanced mobile travel management strategies, policies and practices
- › Explore airline industry trends and forecasts
- › Gain valuable insight on hotel trends and what they mean to buyers



THE WESTIN GEORGETOWN



**JACK LEVER**  
Global Travel and Card Manager  
Booz Allen Hamilton



**DANA RIXTER**  
Director, Travel Services  
BAE Systems



**ROSE SHUKRALLAH**  
Chief, Transportation Section  
International Monetary Fund



**MARK WOODWORTH**  
Senior Managing Director  
PKF Hospitality Research

AND MORE!

## REGISTER TODAY!

[BusinessTravelTrends.com/WashingtonDC](http://BusinessTravelTrends.com/WashingtonDC)

PRESENTED BY

**BTNGROUP**  
CONFERENCES

SPONSORED BY



# U.S. CITY PER DIEMS ALPHABETIZED

Rank	City	Hotel	Car	Food	Total	Rank	City	Hotel	Car	Food	Total
83	Akron, Ohio	\$144.92	\$41.90	\$88.30	\$275.12	46	Madison, Wis.	\$161.33	\$44.98	\$100.15	\$306.46
37	Albany, N.Y.	\$170.06	\$45.41	\$103.03	\$318.50	41	Memphis, Tenn.	\$155.06	\$48.41	\$108.86	\$312.33
95	Albuquerque, N.M.	\$119.12	\$48.29	\$86.44	\$253.85	16	Miami	\$209.51	\$43.68	\$112.24	\$365.43
82	Allentown, Pa.	\$145.24	\$43.67	\$87.15	\$276.06	43	Milwaukee	\$160.82	\$46.38	\$103.64	\$310.84
35	Anaheim, Calif.	\$179.68	\$44.38	\$95.01	\$319.07	15	Minneapolis	\$211.00	\$50.70	\$111.59	\$373.29
25	Atlanta	\$187.61	\$47.53	\$110.29	\$345.42	91	Mobile, Ala.	\$137.37	\$40.24	\$88.37	\$265.98
18	Austin, Texas	\$209.49	\$49.96	\$103.80	\$363.25	24	Nashville, Tenn.	\$203.32	\$45.65	\$96.46	\$345.43
98	Bakersfield, Calif.	\$128.31	\$41.81	\$81.16	\$251.28	22	New Orleans	\$204.18	\$45.69	\$98.52	\$348.38
20	Baltimore	\$207.24	\$49.21	\$103.58	\$360.03	2	New York	\$327.63	\$77.35	\$118.06	\$523.05
81	Baton Rouge, La.	\$141.55	\$44.80	\$90.17	\$276.52	33	Newark, N.J.	\$184.52	\$62.61	\$80.87	\$328.00
93	Biloxi, Miss.	\$127.19	\$41.84	\$90.68	\$259.71	100	Norfolk Va.	\$118.13	\$41.45	\$88.56	\$248.15
67	Birmingham, Ala.	\$151.18	\$46.92	\$93.28	\$291.37	14	Oakland, Calif.	\$219.91	\$50.48	\$105.57	\$375.95
3	Boston	\$344.18	\$62.59	\$95.92	\$502.69	74	Oklahoma City	\$147.38	\$47.04	\$92.54	\$286.96
58	Buffalo, N.Y.	\$158.53	\$46.45	\$92.15	\$297.13	59	Omaha, Neb.	\$152.83	\$49.68	\$93.23	\$295.74
30	Charleston, S.C.	\$186.35	\$46.26	\$98.17	\$330.78	69	Orlando, Fla.	\$149.96	\$40.05	\$98.83	\$288.84
73	Charleston, W.V.	\$153.66	\$45.47	\$87.94	\$287.07	61	Peoria, Ill.	\$149.95	\$44.58	\$98.43	\$292.97
32	Charlotte, N.C.	\$184.94	\$46.29	\$98.12	\$329.35	13	Philadelphia	\$220.47	\$50.46	\$106.36	\$377.29
89	Chattanooga, Tenn.	\$139.32	\$44.91	\$85.23	\$269.46	40	Phoenix	\$156.47	\$50.23	\$105.83	\$312.53
12	Chicago	\$217.76	\$58.22	\$103.92	\$379.90	31	Pittsburgh	\$178.34	\$50.43	\$101.63	\$330.40
42	Cincinnati	\$173.60	\$45.85	\$92.63	\$312.08	17	Portland, Ore.	\$200.41	\$50.21	\$113.85	\$364.47
38	Cleveland	\$172.94	\$47.63	\$95.42	\$316.00	29	Providence, R.I.	\$186.32	\$38.49	\$108.82	\$333.63
75	Columbia, S.C.	\$144.30	\$48.35	\$93.65	\$286.30	70	Raleigh, N.C.	\$156.30	\$44.52	\$87.95	\$288.77
44	Columbus, Ohio	\$161.17	\$50.56	\$94.79	\$306.52	64	Richmond, Va.	\$151.64	\$44.85	\$96.22	\$292.71
85	Corpus Christi, Tx	\$148.03	\$49.80	\$75.68	\$273.51	86	Roanoke, Va.	\$139.00	\$44.05	\$89.77	\$272.82
27	Dallas	\$183.47	\$50.63	\$107.45	\$341.55	39	Rochester, Minn.	\$164.03	\$52.95	\$98.12	\$315.10
94	Dayton, Ohio	\$132.25	\$45.31	\$79.15	\$256.71	72	Rochester, N.Y.	\$141.68	\$45.83	\$99.66	\$287.18
21	Denver	\$197.61	\$46.42	\$111.00	\$355.03	48	Sacramento, Calif.	\$160.15	\$38.94	\$107.02	\$306.12
55	Des Moines, Iowa	\$167.62	\$46.99	\$86.09	\$300.69	66	Salt Lake City	\$161.47	\$47.11	\$83.48	\$292.06
26	Detroit	\$198.59	\$40.47	\$105.15	\$344.21	47	San Antonio	\$156.65	\$49.89	\$99.80	\$306.34
79	El Paso, Texas	\$140.45	\$47.04	\$92.72	\$280.21	23	San Diego	\$192.19	\$45.70	\$110.19	\$348.08
34	Fort Lauderdale, Fla.	\$176.22	\$42.50	\$108.11	\$326.82	1	San Francisco	\$370.78	\$56.01	\$120.55	\$547.34
92	Fort Wayne, Ind.	\$126.97	\$46.13	\$91.25	\$264.35	9	San Jose, Calif.	\$246.78	\$47.22	\$104.28	\$398.28
76	Fresno, Calif.	\$144.20	\$43.86	\$96.71	\$284.78	6	Santa Barbara, Calif.	\$224.68	\$52.87	\$131.77	\$409.32
45	Grand Rapids, Mich.	\$169.97	\$43.91	\$92.61	\$306.49	60	Sarasota, Fla.	\$149.55	\$49.18	\$95.96	\$294.69
65	Greensboro, N.C.	\$147.21	\$44.02	\$100.89	\$292.12	49	Savannah, Ga.	\$156.44	\$42.54	\$106.90	\$305.88
50	Greenville, S.C.	\$161.14	\$44.87	\$99.52	\$305.52	4	Seattle	\$253.22	\$49.40	\$116.25	\$418.88
62	Harrisburg, Pa.	\$145.28	\$48.04	\$99.57	\$292.90	97	Shreveport, La.	\$115.94	\$43.88	\$91.49	\$251.31
10	Hartford, Conn.	\$218.02	\$48.92	\$120.17	\$387.11	68	Spokane, Wash.	\$138.89	\$50.35	\$100.30	\$289.54
7	Honolulu	\$237.97	\$38.29	\$127.67	\$403.92	71	Springfield, Mo.	\$138.91	\$51.31	\$97.00	\$287.22
19	Houston	\$200.12	\$51.75	\$111.31	\$363.17	36	St. Louis	\$167.04	\$45.90	\$105.77	\$318.71
57	Indianapolis	\$157.26	\$50.31	\$90.07	\$297.64	56	Syracuse, N.Y.	\$161.80	\$44.99	\$91.66	\$298.45
99	Jackson, Miss.	\$128.47	\$44.78	\$77.51	\$250.76	80	Tallahassee, Fla.	\$139.11	\$42.85	\$94.79	\$276.75
84	Jacksonville, Fla.	\$137.30	\$43.61	\$93.62	\$274.53	63	Tampa, Fla.	\$159.72	\$44.55	\$88.52	\$292.79
52	Kansas City, Mo.	\$163.94	\$50.78	\$87.84	\$302.57	78	Toledo, Ohio	\$148.67	\$42.94	\$92.11	\$283.72
87	Knoxville, Tenn.	\$138.57	\$43.27	\$90.78	\$272.62	96	Tucson, Ariz.	\$114.59	\$44.54	\$93.67	\$252.79
28	Las Vegas	\$169.24	\$46.83	\$118.26	\$334.34	90	Tulsa, Okla.	\$122.51	\$47.37	\$97.84	\$267.73
88	Lexington, Ky.	\$135.26	\$42.32	\$93.09	\$270.67	5	Washington, D.C.	\$245.81	\$44.07	\$121.21	\$411.10
53	Little Rock, Ark.	\$143.01	\$58.54	\$100.87	\$302.42	11	White Plains, N.Y.	\$217.79	\$59.47	\$105.75	\$383.02
8	Los Angeles	\$245.46	\$46.22	\$111.11	\$402.79	77	Wichita, Kan.	\$137.04	\$45.34	\$101.69	\$284.07
51	Louisville, Ky.	\$171.22	\$44.06	\$87.43	\$302.71	54	Wilmington, Del.	\$179.55	\$36.99	\$85.83	\$302.38

# United Airlines

At United Airlines, we are focused on delivering the products, programs and services that help make doing business with us easier and more enjoyable for travelers.

## Relationships Matter

Our Sales team is dedicated to rewarding and productive relationships with our customers. We aim to be the industry's most visible and accessible Sales force, and we'll make sure we understand your unique business needs. In conjunction with our dedicated Executive Accounts Desk and our inside sales support team, we are there for you 24/7. At the airport and onboard our flights, we are equipping our front-line employees with Apple iPhones, enabling them to meet customers' needs more quickly, while having access to additional operational information at their fingertips.

## Focusing on Reliability

We are intensely focused on delivering a best-in-class operation, and have invested heavily in our products, our planes and our people. Last year we achieved record operational performance—not just year over year, but since our merger in 2010. In 2016, we are building on this momentum and have launched our Global Performance Commitment, an industry-leading promise that we will get you and your team where you need to be, on time, across our entire



network. If we fail to beat one of our major U.S. network competitors in on-time performance and completion factor, we'll compensate eligible corporate accounts accordingly.

## Productivity and Entertainment on the Go

We know you want to stay connected to work, family and friends while on the go, and that is why we have installed Wi-Fi on over 90% of our mainline and large regional aircraft. United currently has one of the largest offerings of free personal device entertainment—already on more than 350 aircraft—with scores of television shows and movies available for streaming directly to travelers' laptop computers and iOS and Android mobile devices.

## Refreshing United Clubs

We are investing over \$100 million in our United Club locations over the next few years to offer customers added comfort and convenience. In 2016, we will begin extensive renovations at New York/Newark, Chicago O'Hare, Los Angeles, Fort Lauderdale, Dallas-Fort Worth and Guam. Our customers deserve the very best travel experience, and our new clubs are not only beautiful spaces, they are also very functional and will provide the

perfect settings for customers to relax, refresh and recharge before their flights.

## Ever-expanding Network

We are proud to offer the world's most comprehensive global route network. In 2016, we are excited to expand our unparalleled network even further with new flights between San Francisco and Singapore, Tel Aviv, Auckland and Xi'an; New York/Newark and Athens; and Washington Dulles and Barcelona and Lisbon. Customers connecting through our hubs will enjoy countless options for non-stop flights to and from other cities across the Americas.

Our commitment to being flyer friendly means providing you—our valued corporate and travel agency clients—with great service, ongoing product enhancements, and operational reliability. Thank you for your business and we look forward to welcoming you on a United flight soon.

For reservations and information,  
visit [www.united.com](http://www.united.com)



**UNITED** 

A STAR ALLIANCE MEMBER 

# U.S. HOTEL COST BREAKDOWN

Rank	City	Average Daily Rate Booked January-November 2015				Sales Tax, Occupancy Tax & Surcharges	Total	Year-over-Year Change
		Upper-Upscale	Upscale	Midscale	Average (Also Including Luxury & Economy)			
1	San Francisco	\$316.35	\$323.76	\$237.66	\$318.42	\$52.36	\$370.78	9.6%
2	Boston	\$294.36	\$299.91	\$261.10	\$300.75	\$43.43	\$344.18	14.3%
3	New York	\$283.44	\$256.09	\$212.25	\$282.47	\$45.16	\$327.63	7.4%
4	Seattle	\$223.31	\$208.74	\$160.10	\$217.06	\$36.16	\$253.22	14.0%
5	San Jose	\$253.88	\$192.29	\$192.01	\$214.21	\$32.57	\$246.78	18.2%
6	Washington, D.C.	\$218.87	\$176.87	\$157.89	\$214.68	\$31.13	\$245.81	5.9%
7	Los Angeles	\$194.21	\$232.96	\$178.31	\$211.15	\$34.31	\$245.46	15.7%
8	Honolulu	\$216.41	\$186.92	\$187.88	\$208.82	\$29.15	\$237.97	2.6%
9	Santa Barbara, Calif.	\$214.61	N/A	\$176.20	\$197.04	\$27.64	\$224.68	6.0%
10	Philadelphia	\$191.71	\$196.56	\$159.37	\$190.88	\$29.59	\$220.47	5.2%
11	Oakland, Calif.	\$214.04	\$163.44	\$161.90	\$191.45	\$28.46	\$219.91	10.3%
12	Hartford, Conn.	\$192.05	\$180.14	\$117.67	\$189.59	\$28.43	\$218.02	4.7%
13	White Plains, N.Y.	\$196.49	\$184.22	N/A	\$190.41	\$27.38	\$217.79	-0.2%
14	Chicago	\$194.10	\$157.24	\$139.83	\$187.08	\$30.68	\$217.76	14.1%
15	Minneapolis	\$192.90	\$159.89	\$122.70	\$186.07	\$24.93	\$211.00	5.7%
16	Miami	\$177.07	\$152.47	\$167.70	\$185.41	\$24.10	\$209.51	10.2%
17	Austin, Texas	\$195.38	\$159.54	\$141.36	\$181.22	\$28.27	\$209.49	9.1%
18	Baltimore	\$181.90	\$171.08	\$143.91	\$179.43	\$27.81	\$207.24	7.3%
19	New Orleans	\$171.93	\$171.19	\$147.19	\$176.19	\$27.99	\$204.18	9.0%
20	Nashville, Tenn.	\$182.74	\$170.42	\$148.14	\$174.24	\$29.08	\$203.32	10.9%
21	Portland, Ore.	\$199.59	\$148.23	\$136.71	\$175.03	\$25.38	\$200.41	13.8%
22	Houston	\$184.02	\$157.04	\$134.68	\$171.04	\$29.08	\$200.12	4.4%
23	Detroit	\$176.36	\$143.04	\$125.40	\$172.69	\$25.90	\$198.59	22.4%
24	Denver	\$176.04	\$169.77	\$142.24	\$172.21	\$25.40	\$197.61	8.5%
25	San Diego	\$180.57	\$155.68	\$146.72	\$170.48	\$21.71	\$192.19	7.7%
26	Atlanta	\$155.21	\$141.24	\$113.28	\$157.46	\$30.15	\$187.61	12.6%
27	Charleston, S.C.	\$177.88	\$164.69	\$133.55	\$164.19	\$22.16	\$186.35	7.5%
28	Providence, R.I.	\$166.48	\$146.21	\$149.03	\$164.89	\$21.43	\$186.32	6.9%
29	Charlotte, N.C.	\$177.75	\$144.53	\$121.76	\$160.47	\$24.47	\$184.94	5.3%
30	Newark, N.J.	\$173.18	\$161.42	\$125.52	\$159.76	\$24.76	\$184.52	2.9%
31	Dallas	\$160.81	\$135.81	\$109.50	\$159.54	\$23.93	\$183.47	11.5%
32	Anaheim, Calif.	\$156.42	\$182.65	\$136.15	\$153.57	\$26.11	\$179.68	4.0%
33	Wilmington, Del.	\$158.30	\$159.44	\$92.64	\$163.23	\$16.32	\$179.55	13.4%
34	Pittsburgh	\$169.74	\$138.20	\$131.03	\$156.44	\$21.90	\$178.34	2.4%
35	Fort Lauderdale, Fla.	\$161.12	\$151.97	\$126.18	\$158.76	\$17.46	\$176.22	8.1%
36	Cincinnati	\$166.83	\$144.60	\$119.43	\$147.79	\$25.81	\$173.60	2.6%
37	Cleveland	\$147.69	\$153.80	\$123.14	\$148.45	\$24.49	\$172.94	5.5%
	<b>Average Total</b>	<b>\$160.32</b>	<b>\$144.09</b>	<b>\$91.39</b>	<b>\$150.67</b>	<b>\$22.13</b>	<b>\$172.80</b>	<b>5.6%</b>
38	Louisville, Ky.	\$156.64	\$137.22	\$133.67	\$145.72	\$25.50	\$171.22	1.9%
39	Albany, N.Y.	\$169.36	\$155.08	\$124.70	\$149.10	\$20.96	\$170.06	-0.3%
40	Grand Rapids, Mich.	\$164.80	\$136.93	\$125.43	\$147.80	\$22.17	\$169.97	7.1%
41	Las Vegas	\$135.34	\$134.50	\$137.64	\$151.11	\$18.13	\$169.24	16.0%
42	Des Moines, Iowa	\$164.93	\$159.57	\$127.57	\$149.66	\$17.96	\$167.62	3.3%
43	St. Louis	\$150.22	\$128.98	\$112.55	\$144.09	\$22.95	\$167.04	5.2%
44	Rochester, Minn.	\$166.99	\$149.01	\$107.17	\$143.89	\$20.14	\$164.03	5.0%
45	Kansas City, Mo.	\$147.77	\$135.18	\$117.82	\$138.80	\$25.14	\$163.94	5.6%
46	Syracuse, N.Y.	\$148.34	\$148.96	\$117.54	\$143.19	\$18.61	\$161.80	-0.4%
47	Salt Lake City	\$157.10	\$125.83	\$122.61	\$143.39	\$18.08	\$161.47	6.9%
48	Madison, Wis.	\$155.73	\$132.08	\$129.38	\$140.90	\$20.43	\$161.33	6.0%
49	Columbus, Ohio	\$149.97	\$129.35	\$121.45	\$137.17	\$24.00	\$161.17	4.4%
50	Greenville, S.C.	\$162.41	\$120.30	\$123.40	\$143.88	\$17.26	\$161.14	7.0%

Rank	City	Average Daily Rate Booked January-November 2015				Average (Also Including Luxury & Economy)	Sales Tax, Occupancy Tax & Surcharges	Total	Year-over-Year Change
		Upper-Upscale	Upscale	Midscale					
51	Milwaukee	\$149.98	\$130.63	\$116.15	\$139.72	\$21.10	\$160.82	6.0%	
52	Sacramento, Calif.	\$152.19	\$139.02	\$120.12	\$139.21	\$20.94	\$160.15	-2.6%	
53	Tampa, Fla.	\$158.00	\$126.35	\$113.93	\$142.61	\$17.11	\$159.72	2.7%	
54	Buffalo, N.Y.	\$144.85	\$126.80	\$130.12	\$139.37	\$19.16	\$158.53	3.9%	
55	Indianapolis	\$147.09	\$119.21	\$106.46	\$134.41	\$22.85	\$157.26	3.8%	
56	San Antonio	\$147.52	\$123.51	\$111.36	\$134.18	\$22.47	\$156.65	3.7%	
57	Phoenix	\$145.45	\$122.11	\$114.89	\$138.14	\$18.33	\$156.47	7.9%	
58	Savannah, Ga.	\$150.68	\$120.83	\$117.25	\$133.14	\$23.30	\$156.44	12.8%	
59	Raleigh, N.C.	\$154.51	\$116.03	\$119.25	\$138.63	\$17.67	\$156.30	3.4%	
60	Memphis, Tenn.	\$140.76	\$120.47	\$113.01	\$129.99	\$25.07	\$155.06	9.3%	
61	Charleston, W.V.	\$150.87	\$145.06	\$121.10	\$136.59	\$17.07	\$153.66	1.3%	
62	Omaha, Neb.	\$138.21	\$136.15	\$109.77	\$129.34	\$23.49	\$152.83	-0.9%	
63	Richmond, Va.	\$142.47	\$115.28	\$108.58	\$133.84	\$17.80	\$151.64	7.2%	
64	Birmingham, Ala.	\$141.52	\$117.37	\$112.30	\$128.12	\$23.06	\$151.18	1.1%	
65	Orlando, Fla.	\$139.34	\$137.76	\$107.09	\$133.30	\$16.66	\$149.96	3.7%	
66	Peoria, Ill.	\$150.96	\$132.02	\$115.02	\$132.85	\$17.10	\$149.95	2.9%	
67	Sarasota, Fla.	\$153.46	\$129.42	\$123.02	\$133.53	\$16.02	\$149.55	3.3%	
68	Toledo, Ohio	\$145.48	N/A	\$115.46	\$127.07	\$21.60	\$148.67	5.8%	
69	Corpus Christi, Texas	\$135.86	\$126.81	\$121.99	\$128.72	\$19.31	\$148.03	3.2%	
70	Oklahoma City	\$146.47	\$123.73	\$104.62	\$129.42	\$17.96	\$147.38	0.2%	
71	Greensboro, N.C.	\$140.03	\$128.87	\$114.89	\$130.56	\$16.65	\$147.21	3.1%	
72	Harrisburg, Pa.	\$144.15	\$129.64	\$109.33	\$130.88	\$14.40	\$145.28	5.5%	
73	Allentown, P.A.	\$171.40	\$119.92	\$109.22	\$132.04	\$13.20	\$145.24	19.2%	
74	Akron, Ohio	\$134.71	\$132.65	\$110.09	\$125.74	\$19.18	\$144.92	5.7%	
75	Columbia, S.C.	\$133.45	\$131.53	\$113.79	\$126.58	\$17.72	\$144.30	7.7%	
76	Fresno, Calif.	\$138.05	\$144.84	\$110.46	\$126.49	\$17.71	\$144.20	1.9%	
77	Little Rock, Ark.	\$137.17	\$118.96	\$108.63	\$124.36	\$18.65	\$143.01	1.7%	
78	Rochester, N.Y.	\$139.15	\$108.41	\$112.28	\$124.28	\$17.40	\$141.68	5.4%	
79	Baton Rouge, La.	\$129.38	\$121.67	\$109.17	\$122.03	\$19.52	\$141.55	0.7%	
80	El Paso, Texas	\$142.13	\$111.16	\$108.08	\$119.53	\$20.92	\$140.45	7.1%	
81	Chattanooga, Tenn.	\$128.46	\$115.44	\$105.09	\$118.82	\$20.50	\$139.32	4.5%	
82	Tallahassee, Fla.	\$129.55	\$128.12	\$113.80	\$123.65	\$15.46	\$139.11	3.5%	
83	Roanoke, Va.	\$127.62	\$125.16	\$115.21	\$122.68	\$16.32	\$139.00	-0.7%	
84	Springfield, Mo.	\$131.31	\$130.67	\$106.78	\$119.28	\$19.63	\$138.91	5.8%	
85	Spokane, Wash.	\$132.33	\$119.29	\$112.17	\$121.83	\$17.06	\$138.89	-0.4%	
86	Knoxville, Tenn.	\$125.36	\$117.33	\$109.79	\$118.18	\$20.39	\$138.57	4.6%	
87	Mobile, Ala.	\$125.94	\$114.99	\$114.57	\$120.50	\$16.87	\$137.37	0.1%	
88	Jacksonville, Fla.	\$130.02	\$111.94	\$108.31	\$119.39	\$17.91	\$137.30	10.0%	
89	Wichita, Kan.	\$127.29	\$120.82	\$106.33	\$118.26	\$18.78	\$137.04	4.1%	
90	Lexington, Ky.	\$118.90	\$126.60	\$114.72	\$119.26	\$16.00	\$135.26	5.9%	
91	Dayton, Ohio	\$120.85	\$111.88	\$108.33	\$116.78	\$15.47	\$132.25	4.3%	
92	Jackson, Miss.	\$119.61	\$116.03	\$96.35	\$115.06	\$13.41	\$128.47	-3.3%	
93	Bakersfield, Calif.	\$112.60	\$128.87	\$108.84	\$114.56	\$13.75	\$128.31	0.2%	
94	Biloxi, Miss.	N/A	N/A	\$113.56	\$113.56	\$13.63	\$127.19	1.6%	
95	Fort Wayne, Ind.	\$137.76	\$103.17	\$107.39	\$111.38	\$15.59	\$126.97	3.9%	
96	Tulsa, Okla.	\$112.74	\$105.48	\$96.80	\$108.27	\$14.24	\$122.51	1.6%	
97	Albuquerque, N.M.	\$111.24	\$100.16	\$96.08	\$104.70	\$14.42	\$119.12	0.1%	
98	Norfolk, Va.	\$105.39	\$99.97	\$97.04	\$101.87	\$16.26	\$118.13	-3.3%	
99	Shreveport, La.	\$103.06	\$106.20	\$100.62	\$102.51	\$13.43	\$115.94	-0.1%	
100	Tucson, Ariz.	\$103.30	\$103.07	\$91.39	\$100.48	\$14.11	\$114.59	-2.8%	

# U.S. CAR RENTAL COST BREAKDOWN

Rank	City	Average Daily Rate January-November 2015				Average Taxes & Fees	Total	Year-over-Year Change
		Compact	Intermediate	Full-Size	Average			
1	New York	\$47.32	\$58.38	\$62.77	\$56.16	37.75%	\$77.35	7.56%
2	Newark, N.J.	\$44.75	\$45.14	\$47.42	\$45.77	36.79%	\$62.61	-1.56%
3	Boston	\$36.67	\$37.14	\$40.99	\$38.27	63.54%	\$62.59	-0.49%
4	White Plains, N.Y.	\$45.11	\$47.81	\$44.09	\$45.67	30.21%	\$59.47	2.00%
5	Little Rock, Ark.	\$34.79	\$34.01	\$38.19	\$35.67	64.14%	\$58.54	5.78%
6	Chicago	\$35.50	\$37.43	\$40.51	\$37.82	53.97%	\$58.22	-13.54%
7	San Francisco	\$33.12	\$35.13	\$37.16	\$35.14	59.41%	\$56.01	-8.07%
8	Rochester, Minn.	\$34.98	\$38.01	\$43.05	\$38.68	36.89%	\$52.95	5.86%
9	Santa Barbara, Calif.	\$30.72	\$31.50	\$40.53	\$34.25	54.36%	\$52.87	12.70%
9	Houston	\$32.04	\$33.75	\$37.99	\$34.59	49.58%	\$51.75	-4.71%
11	Springfield, Mo.	\$33.30	\$33.80	\$36.14	\$34.41	49.11%	\$51.31	5.14%
12	Kansas City, Kan.	\$32.18	\$35.17	\$37.68	\$35.01	45.07%	\$50.78	-1.15%
13	Minneapolis	\$33.98	\$34.68	\$37.69	\$35.45	43.02%	\$50.70	-2.27%
14	Dallas	\$33.67	\$34.61	\$36.83	\$35.04	44.50%	\$50.63	-0.90%
15	Columbus, Ohio	\$34.77	\$37.23	\$38.04	\$36.68	37.83%	\$50.56	0.36%
16	Oakland, Calif.	\$33.28	\$34.89	\$37.93	\$35.37	42.72%	\$50.48	24.92%
17	Philadelphia	\$35.50	\$35.53	\$37.81	\$36.28	39.09%	\$50.46	-7.63%
18	Pittsburgh	\$35.16	\$33.35	\$38.72	\$35.74	41.10%	\$50.43	-2.11%
19	Spokane, Wash.	\$33.50	\$36.02	\$41.43	\$36.98	36.14%	\$50.35	-2.72%
20	Indianapolis	\$33.52	\$34.73	\$36.86	\$35.04	43.59%	\$50.31	3.80%
21	Phoenix	\$33.46	\$33.69	\$37.53	\$34.89	43.96%	\$50.23	2.45%
22	Portland, Ore.	\$32.46	\$34.00	\$38.68	\$35.05	43.25%	\$50.21	12.33%
23	Austin, Texas	\$33.96	\$35.38	\$38.42	\$35.92	39.08%	\$49.96	-10.96%
24	San Antonio	\$35.31	\$35.07	\$37.10	\$35.83	39.25%	\$49.89	-4.44%
24	Corpus Christi, Texas	\$33.09	\$33.71	\$36.13	\$34.31	45.17%	\$49.80	1.49%
26	Omaha, Neb.	\$32.54	\$33.90	\$36.15	\$34.20	45.27%	\$49.68	-8.05%
27	Seattle	\$33.95	\$34.19	\$38.27	\$35.47	39.29%	\$49.40	-2.29%
28	Baltimore	\$35.88	\$34.51	\$36.05	\$35.48	38.70%	\$49.21	-3.51%
29	Sarasota, Fla.	\$32.45	\$34.62	\$35.41	\$34.16	43.95%	\$49.18	15.39%
30	Hartford, Conn.	\$33.50	\$34.41	\$37.97	\$35.29	38.62%	\$48.92	22.33%
31	Memphis, Tenn.	\$33.22	\$33.41	\$38.30	\$34.97	38.41%	\$48.41	4.04%
32	Columbia, S.C.	\$32.41	\$35.60	\$36.48	\$34.83	38.83%	\$48.35	-0.02%
33	Albuquerque, N.M.	\$32.70	\$33.72	\$37.99	\$34.81	38.75%	\$48.29	8.39%
34	Harrisburg, Pa.	\$28.54	\$36.80	\$32.84	\$32.73	46.80%	\$48.04	12.77%
35	Cleveland	\$34.49	\$34.52	\$36.17	\$35.06	35.86%	\$47.63	-0.58%
36	Atlanta	\$33.96	\$35.38	\$38.42	\$35.92	32.30%	\$47.53	-9.19%
37	Tulsa, Okla.	\$35.38	\$33.00	\$37.15	\$35.18	34.67%	\$47.37	-4.88%
38	San Jose, Calif.	\$32.78	\$34.36	\$34.94	\$34.03	38.77%	\$47.22	0.19%
	<b>Average Total</b>	<b>\$33.40</b>	<b>\$34.50</b>	<b>\$37.46</b>	<b>\$35.12</b>	<b>34.07%</b>	<b>\$47.12</b>	<b>0.70%</b>
39	Salt Lake City	\$33.48	\$31.84	\$35.81	\$33.71	39.73%	\$47.11	-1.27%
40	Oklahoma City	\$33.19	\$33.35	\$37.23	\$34.59	36.00%	\$47.04	-4.76%
41	El Paso, Texas	\$32.65	\$31.08	\$33.79	\$32.51	44.69%	\$47.04	2.35%
42	Des Moines, Iowa	\$36.34	\$32.82	\$35.43	\$34.86	34.78%	\$46.99	5.52%
43	Birmingham, Ala.	\$33.12	\$35.50	\$38.60	\$35.74	31.27%	\$46.92	-0.68%
44	Las Vegas	\$31.02	\$32.99	\$36.75	\$33.59	39.42%	\$46.83	-2.60%
45	Buffalo, N.Y.	\$36.21	\$35.79	\$37.27	\$36.42	27.52%	\$46.45	2.74%
46	Denver	\$35.14	\$35.18	\$37.36	\$35.89	29.31%	\$46.42	-0.26%
47	Milwaukee	\$33.98	\$34.72	\$37.84	\$35.51	30.62%	\$46.38	-2.66%
48	Charlotte, N.C.	\$30.40	\$34.49	\$38.20	\$34.36	34.70%	\$46.29	-8.14%
49	Charleston, S.C.	\$32.13	\$33.87	\$38.96	\$34.99	32.22%	\$46.26	1.96%
50	Los Angeles	\$33.68	\$34.70	\$36.38	\$34.92	32.36%	\$46.22	-0.88%

Rank	City	Average Daily Rate January-November 2015				Average Taxes & Fees	Total	Year-over-Year Change
		Compact	Intermediate	Full-Size	Average			
51	Fort Wayne, Ind.	\$35.94	\$36.08	\$36.55	\$36.19	27.47%	\$46.13	0.15%
52	Saint Louis	\$34.90	\$34.68	\$37.49	\$35.69	28.63%	\$45.90	-1.20%
53	Cincinnati	\$33.91	\$35.10	\$37.17	\$35.39	29.55%	\$45.85	0.39%
53	Rochester, N.Y.	\$34.10	\$35.16	\$39.30	\$36.19	26.66%	\$45.83	0.95%
55	San Diego	\$32.19	\$32.64	\$34.77	\$33.20	37.66%	\$45.70	4.36%
56	New Orleans	\$34.47	\$33.64	\$37.86	\$35.32	29.34%	\$45.69	-0.11%
57	Nashville, Tenn.	\$32.35	\$34.71	\$36.80	\$34.62	31.88%	\$45.65	0.89%
58	Charleston, W.Va.	\$32.24	\$36.45	\$39.89	\$36.19	25.63%	\$45.47	4.55%
59	Albany, N.Y.	\$33.48	\$36.70	\$37.37	\$35.85	26.67%	\$45.41	3.65%
60	Wichita, Kan.	\$32.60	\$31.66	\$36.99	\$33.75	34.35%	\$45.34	-4.59%
61	Dayton, Ohio	\$32.90	\$33.86	\$36.07	\$34.28	32.20%	\$45.31	0.85%
62	Syracuse, N.Y.	\$35.21	\$34.71	\$36.64	\$35.52	26.67%	\$44.99	0.58%
63	Madison, Wis.	\$34.21	\$35.89	\$37.66	\$35.92	25.23%	\$44.98	2.30%
63	Chattanooga, Tenn.	\$34.27	\$31.88	\$37.66	\$34.60	29.78%	\$44.91	-1.78%
65	Greenville, S.C.	\$33.82	\$33.18	\$36.49	\$34.50	30.07%	\$44.87	0.20%
66	Richmond, Va.	\$32.09	\$34.38	\$35.52	\$34.00	31.91%	\$44.85	1.56%
67	Baton Rouge, La.	\$33.07	\$33.03	\$37.38	\$34.49	29.90%	\$44.80	7.59%
68	Jackson, Miss.	\$32.74	\$32.92	\$38.19	\$34.62	29.36%	\$44.78	1.22%
69	Peoria, Ill.	\$33.74	\$34.89	\$37.61	\$35.42	25.89%	\$44.58	-1.28%
70	Tampa, Fla.	\$32.03	\$32.59	\$35.46	\$33.36	33.56%	\$44.55	3.12%
71	Tucson, Ariz.	\$32.97	\$31.23	\$34.21	\$32.81	35.76%	\$44.54	0.20%
72	Raleigh, N.C.	\$32.60	\$32.80	\$37.59	\$34.33	29.70%	\$44.52	1.11%
73	Anaheim, Calif.	\$34.90	\$37.87	\$35.04	\$35.94	23.50%	\$44.38	2.75%
74	Washington, D.C.	\$33.27	\$33.43	\$37.92	\$34.87	26.37%	\$44.07	-3.35%
75	Louisville, Ky.	\$31.99	\$34.19	\$36.81	\$34.33	28.34%	\$44.06	-0.88%
75	Roanoke, Va.	\$34.61	\$35.84	\$37.68	\$36.04	22.21%	\$44.05	0.27%
77	Greensboro, N.C.	\$31.58	\$34.09	\$36.63	\$34.10	29.08%	\$44.02	-0.83%
78	Grand Rapids, Mich.	\$34.34	\$34.53	\$38.18	\$35.69	23.04%	\$43.91	-1.01%
79	Shreveport, La.	\$34.64	\$33.99	\$39.24	\$35.96	22.04%	\$43.88	9.05%
80	Fresno, Calif.	\$27.84	\$34.27	\$35.36	\$32.49	35.00%	\$43.86	-2.18%
81	Miami	\$29.78	\$32.48	\$37.72	\$33.33	31.05%	\$43.68	5.15%
82	Allentown, Pa.	\$32.91	\$32.87	\$37.11	\$34.30	27.31%	\$43.67	-7.77%
83	Jacksonville, Fla.	\$32.49	\$34.46	\$36.28	\$34.41	26.74%	\$43.61	2.68%
84	Knoxville, Tenn.	\$32.80	\$32.88	\$37.11	\$34.26	26.28%	\$43.27	-3.10%
85	Toledo, Ohio	\$31.56	\$33.80	\$38.16	\$34.51	24.45%	\$42.94	-4.83%
86	Tallahassee, Fla.	\$31.82	\$35.75	\$34.79	\$34.12	25.60%	\$42.85	0.40%
87	Savannah, Ga.	\$30.60	\$31.55	\$35.81	\$32.65	30.28%	\$42.54	1.94%
88	Fort Lauderdale, Fla.	\$32.50	\$32.86	\$37.04	\$34.13	24.49%	\$42.50	0.66%
89	Lexington, Ky.	\$32.40	\$33.47	\$36.16	\$34.01	24.42%	\$42.32	-1.35%
90	Akron, Ohio	\$33.20	\$33.50	\$35.70	\$34.13	22.76%	\$41.90	7.35%
91	Biloxi, Miss.	\$31.52	\$32.26	\$33.89	\$32.56	28.52%	\$41.84	-2.79%
92	Bakersfield, Calif.	\$33.73	\$33.47	\$35.81	\$34.34	21.75%	\$41.81	6.49%
93	Norfolk, Va.	\$31.97	\$31.78	\$34.21	\$32.65	26.95%	\$41.45	2.07%
94	Detroit	\$27.67	\$32.98	\$37.79	\$32.81	23.32%	\$40.47	1.25%
95	Mobile, Ala.	\$28.33	\$28.78	\$34.34	\$30.48	32.02%	\$40.24	-7.47%
96	Orlando, Fla.	\$31.36	\$31.57	\$33.53	\$32.15	24.56%	\$40.05	-1.64%
97	Sacramento, Calif.	\$26.54	\$31.48	\$36.58	\$31.53	23.50%	\$38.94	-7.15%
98	Providence, R.I.	\$32.95	\$31.58	\$34.24	\$32.92	16.91%	\$38.49	-0.64%
99	Honolulu	\$29.75	\$29.81	\$32.39	\$30.65	24.91%	\$38.29	1.75%
100	Wilmington, Del.	\$31.41	\$31.36	\$36.56	\$33.11	11.72%	\$36.99	-1.36%

# U.S. DAILY FOOD COST BREAKDOWN

	City	Breakfast*	Lunch**	Dinner***	Total	Year-over-Year Change
1	Santa Barbara, Calif.	\$14.92	\$22.92	\$82.04	\$131.77	26.9%
2	Honolulu	\$21.16	\$31.34	\$75.17	\$127.67	-1.8%
3	Washington, D.C.	\$15.82	\$28.18	\$77.22	\$121.21	16.4%
4	San Francisco	\$18.22	\$26.29	\$76.04	\$120.55	9.2%
5	Hartford, Conn.	\$19.07	\$29.20	\$71.89	\$120.17	6.5%
6	Las Vegas	\$19.52	\$26.81	\$71.93	\$118.26	6.1%
7	New York	\$21.58	\$29.65	\$66.84	\$118.06	0.1%
8	Seattle	\$17.83	\$21.53	\$76.89	\$116.25	-0.2%
9	Portland, Ore.	\$19.11	\$31.71	\$63.03	\$113.85	2.4%
10	Miami	\$18.21	\$28.95	\$65.09	\$112.24	-0.2%
11	Minneapolis	\$19.79	\$30.14	\$61.66	\$111.59	2.2%
12	Houston	\$18.34	\$29.34	\$63.63	\$111.31	1.6%
13	Los Angeles	\$22.05	\$29.14	\$59.92	\$111.11	1.3%
14	Denver	\$18.48	\$23.64	\$68.89	\$111.00	0.0%
15	Atlanta	\$17.95	\$24.85	\$67.48	\$110.29	11.4%
16	San Diego	\$18.75	\$28.57	\$62.87	\$110.19	2.8%
17	Memphis, Tenn.	\$16.53	\$25.64	\$66.69	\$108.86	6.1%
18	Providence, R.I.	\$18.78	\$30.62	\$59.42	\$108.82	-3.7%
19	Fort Lauderdale, Fla.	\$17.66	\$24.84	\$65.62	\$108.11	0.2%
20	Dallas	\$15.80	\$28.65	\$63.00	\$107.45	-1.8%
21	Sacramento, Calif.	\$20.00	\$27.42	\$59.60	\$107.02	0.0%
22	Savannah, Ga.	\$17.53	\$24.56	\$64.81	\$106.90	22.8%
23	Philadelphia	\$18.25	\$28.01	\$60.10	\$106.36	1.7%
24	Phoenix	\$17.84	\$26.80	\$61.18	\$105.83	-0.2%
25	Saint Louis	\$16.57	\$24.00	\$65.19	\$105.77	16.9%
26	White Plains, N.Y.	\$13.35	\$26.82	\$65.59	\$105.75	-1.1%
27	Oakland, Calif.	\$18.10	\$28.93	\$58.54	\$105.57	1.4%
28	Detroit	\$17.28	\$24.42	\$63.44	\$105.15	1.8%
29	San Jose, Calif.	\$18.21	\$22.36	\$63.70	\$104.28	-2.9%
30	Chicago	\$19.95	\$26.53	\$57.44	\$103.92	-6.3%
31	Austin, Texas	\$16.19	\$24.93	\$62.68	\$103.80	1.2%
32	Milwaukee	\$15.15	\$22.67	\$65.82	\$103.64	-0.4%
33	Baltimore	\$14.28	\$27.54	\$61.76	\$103.58	1.0%
34	Albany, N.Y.	\$12.52	\$30.26	\$60.26	\$103.03	9.3%
35	Wichita, Kan.	\$16.30	\$25.14	\$60.25	\$101.69	17.0%
36	Pittsburgh	\$17.37	\$26.14	\$58.12	\$101.63	1.0%
37	Greensboro, N.C.	\$15.24	\$26.87	\$58.78	\$100.89	8.1%
38	Little Rock, Ark.	\$18.25	\$26.41	\$56.21	\$100.87	3.6%
39	Spokane, Wash.	\$17.51	\$29.05	\$53.75	\$100.30	14.9%
40	Madison, Wis.	\$17.75	\$21.38	\$61.02	\$100.15	-9.3%
41	San Antonio	\$16.51	\$26.10	\$57.20	\$99.80	-2.4%
42	Rochester, N.Y.	\$12.26	\$28.04	\$59.36	\$99.66	6.8%
43	Harrisburg, Pa.	\$17.30	\$23.48	\$58.78	\$99.57	11.0%
44	Greenville, S.C.	\$14.39	\$24.26	\$60.86	\$99.52	7.3%
45	Orlando, Fla.	\$18.29	\$26.89	\$53.65	\$98.83	-3.6%
	<b>Average Total</b>	<b>\$16.06</b>	<b>\$25.17</b>	<b>\$57.39</b>	<b>\$98.74</b>	<b>1.9%</b>
46	New Orleans, La.	\$16.06	\$18.11	\$64.34	\$98.52	12.6%
47	Peoria, Ill.	\$16.84	\$23.04	\$58.55	\$98.43	3.7%
48	Charleston, S.C.	\$11.38	\$23.07	\$63.72	\$98.17	8.3%
49	Rochester, Minn.	\$17.08	\$26.74	\$54.31	\$98.12	2.5%
50	Charlotte, N.C.	\$14.12	\$26.88	\$57.13	\$98.12	-3.6%

Rank	City	Breakfast*	Lunch**	Dinner***	Total	Year-over-Year Change
51	Tucson, Ariz.	\$15.24	\$26.52	\$56.08	\$97.84	17.3%
52	Springfield, Mo.	\$13.98	\$25.75	\$57.27	\$97.00	8.8%
53	Fresno, Calif.	\$15.95	\$24.44	\$56.32	\$96.71	5.0%
54	Nashville, Tenn.	\$15.94	\$27.13	\$53.39	\$96.46	-1.1%
55	Richmond, Va.	\$18.29	\$24.16	\$53.76	\$96.22	-0.4%
56	Sarasota, Fla.	\$14.33	\$25.27	\$56.37	\$95.96	5.1%
57	Boston	\$15.64	\$18.06	\$62.23	\$95.92	-5.7%
58	Cleveland	\$14.55	\$29.51	\$51.36	\$95.42	2.9%
59	Anaheim, Calif.	\$19.07	\$26.79	\$49.15	\$95.01	-6.0%
60	Columbus, Ohio	\$15.53	\$27.47	\$51.80	\$94.79	-4.5%
61	Tallahassee, Fla.	\$14.69	\$23.31	\$56.79	\$94.79	11.9%
62	Tulsa, Okla.	\$14.19	\$22.36	\$57.12	\$93.67	8.7%
63	Columbia, S.C.	\$15.00	\$22.48	\$56.17	\$93.65	-6.0%
64	Jacksonville, Fla.	\$15.51	\$26.32	\$51.79	\$93.62	4.4%
65	Birmingham, Ala.	\$14.96	\$23.12	\$55.20	\$93.28	4.2%
66	Omaha, Neb.	\$15.51	\$20.88	\$56.83	\$93.23	-9.3%
67	Lexington, Ky.	\$14.35	\$25.32	\$53.43	\$93.09	4.5%
68	El Paso, Texas	\$14.18	\$26.78	\$51.76	\$92.72	-0.2%
69	Cincinnati	\$13.39	\$22.99	\$56.24	\$92.63	-8.9%
70	Grand Rapids, Mich.	\$15.40	\$26.88	\$50.32	\$92.61	-8.2%
71	Oklahoma City, Okla.	\$15.27	\$22.90	\$54.37	\$92.54	-9.6%
72	Buffalo, N.Y.	\$13.20	\$26.31	\$52.65	\$92.15	2.5%
73	Toledo, Ohio	\$13.38	\$24.73	\$54.00	\$92.11	12.0%
74	Syracuse, N.Y.	\$14.30	\$24.63	\$52.73	\$91.66	0.5%
75	Shreveport, La.	\$14.50	\$23.85	\$53.14	\$91.49	7.8%
76	Fort Wayne, Ind.	\$14.10	\$23.54	\$53.61	\$91.25	1.1%
77	Knoxville, Tenn.	\$15.32	\$21.95	\$53.51	\$90.78	9.3%
78	Biloxi, Miss.	\$15.46	\$29.14	\$46.08	\$90.68	9.0%
79	Baton Rouge, La.	\$12.81	\$21.19	\$56.16	\$90.17	-2.1%
80	Indianapolis	\$15.68	\$26.13	\$48.27	\$90.07	5.5%
81	Roanoke, Va.	\$16.06	\$26.64	\$47.06	\$89.77	-3.4%
82	Norfolk, Va.	\$14.75	\$22.23	\$51.58	\$88.56	1.6%
83	Tampa, Fla.	\$14.23	\$21.81	\$52.48	\$88.52	1.5%
84	Mobile, Ala.	\$14.53	\$17.96	\$55.89	\$88.37	-6.9%
85	Akron, Ohio	\$14.80	\$21.19	\$52.31	\$88.30	13.1%
86	Raleigh, N.C.	\$16.64	\$22.85	\$48.46	\$87.95	-0.8%
87	Charleston, W.Va.	\$14.16	\$24.12	\$49.66	\$87.94	3.7%
88	Kansas City, Mo.	\$17.62	\$25.98	\$44.25	\$87.84	1.0%
89	Louisville, Ky.	\$13.95	\$21.07	\$52.41	\$87.43	-9.2%
90	Allentown, Pa.	\$11.54	\$24.69	\$50.92	\$87.15	-3.3%
91	Albuquerque, N.M.	\$15.41	\$24.00	\$47.03	\$86.44	-3.7%
92	Des Moines, Iowa	\$13.57	\$27.07	\$45.45	\$86.09	-2.1%
93	Wilmington, Del.	\$15.80	\$24.99	\$45.04	\$85.83	-3.4%
94	Chattanooga, Tenn.	\$12.90	\$20.35	\$51.98	\$85.23	-3.7%
95	Salt Lake City	\$16.63	\$21.34	\$45.51	\$83.48	-12.9%
96	Bakersfield, Calif.	\$14.63	\$20.31	\$46.23	\$81.16	-9.5%
97	Newark, N.J.	\$16.22	\$20.46	\$44.19	\$80.87	4.7%
98	Dayton, Ohio	\$14.24	\$22.82	\$42.10	\$79.15	-12.8%
99	Jackson, Miss.	\$14.28	\$26.27	\$36.95	\$77.51	-3.5%
100	Corpus Christi, Texas	\$12.76	\$22.50	\$40.42	\$75.68	-4.5%

\*Two eggs and meat (for Starbucks, substitute a breakfast sandwich with eggs and meat), toast, orange juice and coffee \*\*Soup, hamburger or chicken sandwich, slice of pie and soft drink \*\*\*Soup, filet steak, glass of red wine, dessert and coffee. Meals include 15 percent gratuity but no taxes.

# BUSINESS TRAVEL TECH TALK

MARCH 31, 2016



6<sup>th</sup>  
Annual



LOEWS CHICAGO HOTEL

## THE TRAVEL MANAGEMENT TECHNOLOGY CONFERENCE

Join the BTN Group for the industry's sixth annual conference dedicated to travel management technology and designed exclusively for corporate travel buyers. Attendees discuss industry trends and developments, network with peers, and learn new technologies for managing travel and meetings spending.

PRODUCED BY

**BTNGROUP**  
CONFERENCES

SPONSORED BY

**amadeus**



**avis budget group**

Avis  
Budget  
Zipcar  
Payless  
Apex



**cvent**



**LOEWS**  
HOTELS • RESORTS



MasterCard

**roadmap**

**UNITED**  
A STAR ALLIANCE MEMBER

## FEATURED SPEAKERS



**MARY  
BASTRENTAZ**  
Managing Director,  
Global Travel and  
Events  
Accenture



**CHERYL  
BENJAMIN**  
Travel Manager  
Dart Container



**STEVEN  
MANDELBAUM**  
Managing  
Director  
The Advisory  
Board Co.



**STEVE SITTO**  
Global Commodity  
Leader – Travel  
& Fleet  
GE

REGISTER  
TODAY!

[BTNGroupConferences.com/TechTalk](http://BTNGroupConferences.com/TechTalk)

# NON-U.S. CITY PER DIEMS RANKED

FOR MORE DETAIL, TURN TO:

Hotel Cost Breakdown **25** Food Cost Breakdown **26**

KEY:  Americas  EMEA  Asia/Pacific

Rank	City	Hotel	Misc.*	Food	Total	Exchange Rate**	Local Currency
1	Caracas	\$510.48	\$64.88	\$1,127.07	\$1,702.44	6.3	10,691.32
2	London	\$323.29	\$95.29	\$135.01	\$553.58	0.7	365.36
3	Muscat	\$265.16	\$129.41	\$120.66	\$515.23	0.4	195.79
4	Geneva	\$298.27	\$47.34	\$151.20	\$496.81	1.0	511.71
5	Zurich	\$281.25	\$52.00	\$151.21	\$484.46	1.0	498.99
6	Riyadh	\$322.47	\$24.13	\$132.18	\$478.78	3.8	1,795.43
7	Hong Kong	\$295.12	\$47.64	\$130.10	\$472.86	7.8	3,664.67
8	Basel	\$260.69	\$44.34	\$159.45	\$464.48	1.0	478.41
9	Kuwait City	\$306.72	\$31.17	\$115.68	\$453.57	0.3	136.07
10	Tokyo	\$225.36	\$121.16	\$107.03	\$453.55	122.9	55,745.83
11	Lagos	\$306.30	\$36.86	\$100.83	\$443.99	198.9	88,322.93
12	Tel Aviv	\$294.65	\$49.61	\$95.60	\$439.86	3.9	1,702.26
13	Milan	\$238.13	\$107.98	\$82.70	\$428.80	0.9	403.07
14	Stavanger	\$239.34	\$57.60	\$116.99	\$413.94	8.6	3,572.30
15	Nairobi	\$277.64	\$52.67	\$65.72	\$396.02	102.1	40,449.48
16	Paris	\$232.46	\$46.91	\$112.41	\$391.78	0.9	368.27
17	Doha	\$218.25	\$17.41	\$143.82	\$379.48	3.6	1,381.31
18	Dubai	\$225.67	\$18.68	\$132.36	\$376.71	3.7	1,382.53
19	Rome	\$227.15	\$54.79	\$93.15	\$375.09	0.9	352.58
20	Edinburgh	\$225.01	\$49.15	\$94.55	\$368.72	0.7	243.36
21	Shanghai	\$201.62	\$24.61	\$136.69	\$362.92	6.4	2,553.82
22	Abu Dhabi	\$185.50	\$20.18	\$154.68	\$360.36	3.7	1,322.52
23	Stockholm	\$193.80	\$45.42	\$119.79	\$359.01	8.7	3,116.21
24	Taipei	\$212.30	\$32.55	\$97.81	\$342.66	32.7	1,119.28
25	Oslo	\$165.00	\$57.29	\$116.17	\$338.45	8.6	2,920.82
26	Athens	\$190.30	\$54.84	\$93.00	\$338.14	0.9	317.85
27	Copenhagen	\$178.94	\$48.96	\$105.87	\$333.77	7.0	2,343.07
28	Amsterdam	\$172.42	\$61.91	\$97.81	\$332.15	0.9	312.22
29	Osaka-Kobe	\$220.18	\$35.40	\$75.84	\$331.41	122.9	40,733.60
30	Munich	\$162.60	\$64.99	\$99.61	\$327.20	0.9	307.57
31	Glasgow	\$185.62	\$42.08	\$93.65	\$321.35	0.7	212.09
32	Helsinki	\$159.22	\$47.98	\$112.65	\$319.84	0.9	300.65
33	Manchester	\$185.41	\$52.11	\$82.12	\$319.64	0.7	210.96
34	Sydney	\$192.82	\$28.80	\$97.66	\$319.28	0.7	233.07
35	Brussels	\$183.07	\$40.11	\$89.86	\$313.03	0.9	294.25
<b>Average Total</b>		<b>\$178.39</b>	<b>\$36.48</b>	<b>\$97.31</b>	<b>\$312.18</b>		
36	Luxembourg	\$183.81	\$34.52	\$91.22	\$309.55	0.9	290.98
37	Barcelona	\$176.83	\$38.46	\$93.22	\$308.51	0.9	290.00
38	Bratislava	\$124.19	\$86.91	\$93.04	\$304.15	0.9	285.90
39	Birmingham	\$156.23	\$54.38	\$92.44	\$303.05	0.7	200.01
40	Shenzhen	\$174.17	\$22.50	\$104.69	\$301.36	6.4	1,925.69
41	Kiev	\$240.69	\$9.80	\$50.84	\$301.33	23.9	7,201.79
42	Auckland	\$179.21	\$32.89	\$85.61	\$297.71	1.5	446.57
43	Melbourne	\$182.88	\$41.58	\$73.22	\$297.68	1.4	404.84
44	Beijing	\$153.16	\$19.38	\$123.68	\$296.22	6.4	1,892.85
45	Frankfurt	\$159.75	\$29.35	\$102.34	\$291.44	0.9	273.95
46	Singapore	\$142.06	\$30.55	\$117.02	\$289.63	1.4	405.48
47	Nice	\$166.60	\$37.87	\$84.88	\$289.35	0.9	271.99
48	St. Petersburg	\$208.25	\$19.93	\$58.70	\$286.89	66.6	19,092.53
49	Seoul	\$124.03	\$38.46	\$123.14	\$285.63	1,157.4	330,582.45
50	The Hague	\$140.68	\$40.82	\$103.99	\$285.49	0.9	269.36

Rank	City	Hotel	Misc.*	Food	Total	Exchange Rate**	Local Currency
51	Calgary	\$163.66	\$32.59	\$85.96	\$282.22	1.3	378.17
52	Vienna	\$152.45	\$43.46	\$82.20	\$278.11	0.9	261.42
53	Lyon	\$151.55	\$48.51	\$73.53	\$273.59	0.9	257.17
54	Dublin	\$156.49	\$42.77	\$71.04	\$270.29	0.9	254.07
55	Cologne	\$132.78	\$46.37	\$90.16	\$269.31	0.9	253.15
56	Antwerp	\$131.85	\$24.95	\$109.04	\$265.84	0.9	249.89
57	San Salvador	\$193.29	\$25.79	\$44.83	\$263.91	1.0	263.91
58	Toronto	\$138.26	\$44.62	\$79.72	\$262.61	1.3	351.90
59	Lima	\$171.24	\$41.99	\$46.04	\$259.27	3.4	873.74
60	Istanbul	\$157.12	\$18.32	\$82.80	\$258.24	2.9	746.31
61	Lisbon	\$147.76	\$19.68	\$90.25	\$257.69	0.9	242.23
62	Madrid	\$157.71	\$32.61	\$64.92	\$255.23	0.9	239.92
63	Quito	\$168.16	\$35.79	\$51.08	\$255.03	1.0	255.03
64	Sao Paulo	\$186.86	\$20.57	\$47.22	\$254.64	3.9	980.36
65	Berlin	\$124.87	\$31.99	\$95.17	\$252.03	0.9	236.91
66	Vancouver	\$141.87	\$29.49	\$80.56	\$251.92	1.3	337.57
67	Dusseldorf	\$126.27	\$27.09	\$97.62	\$250.97	0.9	235.91
68	Prague	\$131.61	\$26.68	\$91.81	\$250.09	22.4	5,612.02
69	Hamburg	\$127.32	\$37.31	\$83.65	\$248.28	0.9	233.38
70	Grenoble	\$133.27	\$47.45	\$67.22	\$247.93	0.9	233.05
71	Rotterdam	\$127.11	\$24.41	\$90.78	\$242.31	0.9	227.77
72	Ottawa	\$134.79	\$34.47	\$72.68	\$241.95	1.3	324.21
73	Bogota	\$194.83	\$14.44	\$31.66	\$240.92	3122.3	752,219.70
74	Jakarta	\$165.77	\$12.96	\$60.56	\$239.28	13777.5	3,296,675.41
75	San Jose	\$156.15	\$35.12	\$47.58	\$238.85	530.9	126,815.02
76	Stuttgart	\$118.12	\$42.12	\$77.15	\$237.38	0.9	223.14
77	New Delhi	\$165.17	\$5.00	\$65.20	\$235.37	66.5	15,642.69
78	Hanoi	\$164.41	\$8.25	\$59.51	\$232.17	22428.8	5,207,287.53
79	Bangkok	\$138.20	\$17.65	\$73.91	\$229.75	35.8	8,213.56
80	Guangzhou	\$132.00	\$20.16	\$74.86	\$227.01	6.4	1,448.32
81	Santiago	\$145.32	\$29.13	\$52.52	\$226.97	705.3	162,186.34
82	Cairo	\$150.53	\$17.17	\$57.55	\$225.25	7.8	1,763.71
83	Manila	\$155.59	\$9.36	\$59.22	\$224.17	47.2	10,571.86
84	Mexico City	\$132.64	\$24.18	\$65.83	\$222.66	16.5	3,678.34
85	Montreal	\$129.54	\$25.45	\$61.65	\$216.65	1.3	290.31
86	Moscow	\$118.80	\$18.43	\$78.50	\$215.73	66.6	14,356.83
87	Rio de Janeiro	\$138.88	\$24.04	\$52.44	\$215.36	3.9	829.14
88	Panama City	\$127.17	\$39.29	\$48.17	\$214.63	1.0	214.63
89	Budapest	\$119.32	\$30.20	\$62.15	\$211.67	294.1	62,245.80
90	San Juan	\$111.53	\$30.19	\$64.17	\$205.89	1.0	205.89
91	Tianjin	\$103.59	\$13.67	\$87.81	\$205.07	6.4	1,310.40
92	Kuala Lumpur	\$113.52	\$15.79	\$73.94	\$203.25	4.2	861.78
93	Warsaw	\$114.40	\$14.91	\$70.04	\$199.35	4.0	803.38
94	Buenos Aires	\$91.12	\$28.06	\$78.79	\$197.98	9.7	1,916.45
95	Bucharest	\$113.02	\$12.95	\$66.71	\$192.67	4.2	809.21
96	Guatemala City	\$129.98	\$17.69	\$44.55	\$192.22	7.6	1,460.87
97	Cape Town	\$127.63	\$17.62	\$43.65	\$188.90	14.4	2,725.83
98	Mumbai	\$121.17	\$6.62	\$60.09	\$187.88	66.5	12,480.87
99	Johannesburg	\$111.05	\$28.00	\$36.12	\$175.17	14.4	2,527.70
100	Bangalore	\$118.53	\$9.46	\$39.23	\$167.22	66.5	11,113.44

\*One taxi from the main airport to the city center, one taxi from the main train or bus station to the city center and a 33-centileter bottle of Evian water or its equivalent at the airport

# BUSINESS TRAVEL TRENDS & FORECASTS

MINNEAPOLIS

4.28.16

Business Travel Trends & Forecasts Minneapolis is a one-day, buyer-focused conference designed to enhance your corporate travel and meetings program by uniting industry peers and providing a platform for information sharing.

- Discuss original BTN research on traveler priorities and happiness
- Explore hot topics in travel management
- Gain valuable insight on hotel trends and what they mean to buyers



LOEWS MINNEAPOLIS HOTEL



**REX HEINEMAN**  
Director,  
Global Indirect  
Procurement  
Ecolab



**KIM MECK**  
Manager, Travel  
Management  
Services  
3M



**PATTI  
SJUSLSTAD**  
Travel Manager  
Taylor Corp.

AND MORE!

**REGISTER TODAY!**  
[BusinessTravelTrends.com/Minneapolis](http://BusinessTravelTrends.com/Minneapolis)

PRESENTED BY

**BTNGROUP**  
CONFERENCES

SPONSORED BY



# NON-U.S. CITY PER DIEMS ALPHABETIZED

KEY:  Americas  EMEA  Asia/Pacific

Rank	City	Hotel	Misc.*	Food	Total	Exchange Rate**	Local Currency
22	Abu Dhabi	\$185.50	\$20.18	\$154.68	\$360.36	3.7	1,322.52
28	Amsterdam	\$172.42	\$61.91	\$97.81	\$332.15	0.9	312.22
56	Antwerp	\$131.85	\$24.95	\$109.04	\$265.84	0.9	249.89
26	Athens	\$190.30	\$54.84	\$93.00	\$338.14	0.9	317.85
42	Auckland	\$179.21	\$32.89	\$85.61	\$297.71	1.5	446.57
100	Bangalore	\$118.53	\$9.46	\$39.23	\$167.22	66.5	11,113.44
79	Bangkok	\$138.20	\$17.65	\$73.91	\$229.75	35.8	8,213.56
37	Barcelona	\$176.83	\$38.46	\$93.22	\$308.51	0.9	290.00
8	Basel	\$260.69	\$44.34	\$159.45	\$464.48	1.0	478.41
44	Beijing	\$153.16	\$19.38	\$123.68	\$296.22	6.4	1,892.85
65	Berlin	\$124.87	\$31.99	\$95.17	\$252.03	0.9	236.91
39	Birmingham	\$156.23	\$54.38	\$92.44	\$303.05	0.7	200.01
73	Bogota	\$194.83	\$14.44	\$31.66	\$240.92	3122.3	752,219.70
38	Bratislava	\$124.19	\$86.91	\$93.04	\$304.15	0.9	285.90
35	Brussels	\$183.07	\$40.11	\$89.86	\$313.03	0.9	294.25
95	Bucharest	\$113.02	\$12.95	\$66.71	\$192.67	4.2	809.21
89	Budapest	\$119.32	\$30.20	\$62.15	\$211.67	294.1	62,245.80
94	Buenos Aires	\$91.12	\$28.06	\$78.79	\$197.98	9.7	1,916.45
82	Cairo	\$150.53	\$17.17	\$57.55	\$225.25	7.8	1,763.71
51	Calgary	\$163.66	\$32.59	\$85.96	\$282.22	1.3	378.17
97	Cape Town	\$127.63	\$17.62	\$43.65	\$188.90	14.4	2,725.83
1	Caracas	\$510.48	\$64.88	\$1,127.07	\$1,702.44	6.3	10,691.32
55	Cologne	\$132.78	\$46.37	\$90.16	\$269.31	0.9	253.15
27	Copenhagen	\$178.94	\$48.96	\$105.87	\$333.77	7.0	2,343.07
17	Doha	\$218.25	\$17.41	\$143.82	\$379.48	3.6	1,381.31
18	Dubai	\$225.67	\$18.68	\$132.36	\$376.71	3.7	1,382.53
54	Dublin	\$156.49	\$42.77	\$71.04	\$270.29	0.9	254.07
67	Dusseldorf	\$126.27	\$27.09	\$97.62	\$250.97	0.9	235.91
20	Edinburgh	\$225.01	\$49.15	\$94.55	\$368.72	0.7	243.36
45	Frankfurt	\$159.75	\$29.35	\$102.34	\$291.44	0.9	273.95
4	Geneva	\$298.27	\$47.34	\$151.20	\$496.81	1.0	511.71
31	Glasgow	\$185.62	\$42.08	\$93.65	\$321.35	0.7	212.09
70	Grenoble	\$133.27	\$47.45	\$67.22	\$247.93	0.9	233.05
80	Guangzhou	\$132.00	\$20.16	\$74.86	\$227.01	6.4	1,448.32
96	Guatemala City	\$129.98	\$17.69	\$44.55	\$192.22	7.6	1,460.87
50	The Hague	\$140.68	\$40.82	\$103.99	\$285.49	0.9	269.36
69	Hamburg	\$127.32	\$37.31	\$83.65	\$248.28	0.9	233.38
78	Hanoi	\$164.41	\$8.25	\$59.51	\$232.17	22428.8	5,207,287.53
32	Helsinki	\$159.22	\$47.98	\$112.65	\$319.84	0.9	300.65
7	Hong Kong	\$295.12	\$47.64	\$130.10	\$472.86	7.8	3,664.67
60	Istanbul	\$157.12	\$18.32	\$82.80	\$258.24	2.9	746.31
74	Jakarta	\$165.77	\$12.96	\$60.56	\$239.28	13777.5	3,296,675.41
99	Johannesburg	\$111.05	\$28.00	\$36.12	\$175.17	14.4	2,527.70
41	Kiev	\$240.69	\$9.80	\$50.84	\$301.33	23.9	7,201.79
92	Kuala Lumpur	\$113.52	\$15.79	\$73.94	\$203.25	4.2	861.78
9	Kuwait City	\$306.72	\$31.17	\$115.68	\$453.57	0.3	136.07
11	Lagos	\$306.30	\$36.86	\$100.83	\$443.99	198.9	88,322.93
59	Lima	\$171.24	\$41.99	\$46.04	\$259.27	3.4	873.74
61	Lisbon	\$147.76	\$19.68	\$90.25	\$257.69	0.9	242.23
2	London	\$323.29	\$95.29	\$135.01	\$553.58	0.7	365.36
36	Luxembourg	\$183.81	\$34.52	\$91.22	\$309.55	0.9	290.98

Rank	City	Hotel	Misc.*	Food	Total	Exchange Rate**	Local Currency
53	Lyon	\$151.55	\$48.51	\$73.53	\$273.59	0.9	257.17
62	Madrid	\$157.71	\$32.61	\$64.92	\$255.23	0.9	239.92
33	Manchester	\$185.41	\$52.11	\$82.12	\$319.64	0.7	210.96
83	Manila	\$155.59	\$9.36	\$59.22	\$224.17	47.2	10,571.86
43	Melbourne	\$182.88	\$41.58	\$73.22	\$297.68	1.4	404.84
84	Mexico City	\$132.64	\$24.18	\$65.83	\$222.66	16.5	3,678.34
13	Milan	\$238.13	\$107.98	\$82.70	\$428.80	0.9	403.07
85	Montreal	\$129.54	\$25.45	\$61.65	\$216.65	1.3	290.31
86	Moscow	\$118.80	\$18.43	\$78.50	\$215.73	66.6	14,356.83
98	Mumbai	\$121.17	\$6.62	\$60.09	\$187.88	66.5	12,480.87
30	Munich	\$162.60	\$64.99	\$99.61	\$327.20	0.9	307.57
3	Muscat	\$265.16	\$129.41	\$120.66	\$515.23	0.4	195.79
15	Nairobi	\$277.64	\$52.67	\$65.72	\$396.02	102.1	40,449.48
77	New Delhi	\$165.17	\$5.00	\$65.20	\$235.37	66.5	15,642.69
47	Nice	\$166.60	\$37.87	\$84.88	\$289.35	0.9	271.99
29	Osaka-Kobe	\$220.18	\$35.40	\$75.84	\$331.41	122.9	40,733.60
25	Oslo	\$165.00	\$57.29	\$116.17	\$338.45	8.6	2,920.82
72	Ottawa	\$134.79	\$34.47	\$72.68	\$241.95	1.3	324.21
88	Panama City	\$127.17	\$39.29	\$48.17	\$214.63	1.0	214.63
16	Paris	\$232.46	\$46.91	\$112.41	\$391.78	0.9	368.27
68	Prague	\$131.61	\$26.68	\$91.81	\$250.09	22.4	5,612.02
63	Quito	\$168.16	\$35.79	\$51.08	\$255.03	1.0	255.03
87	Rio de Janeiro	\$138.88	\$24.04	\$52.44	\$215.36	3.9	829.14
6	Riyadh	\$322.47	\$24.13	\$132.18	\$478.78	3.8	1,795.43
19	Rome	\$227.15	\$54.79	\$93.15	\$375.09	0.9	352.58
71	Rotterdam	\$127.11	\$24.41	\$90.78	\$242.31	0.9	227.77
75	San Jose	\$156.15	\$35.12	\$47.58	\$238.85	530.9	126,815.02
90	San Juan	\$111.53	\$30.19	\$64.17	\$205.89	1.0	205.89
57	San Salvador	\$193.29	\$25.79	\$44.83	\$263.91	1.0	263.91
81	Santiago	\$145.32	\$29.13	\$52.52	\$226.97	705.3	162,186.34
64	Sao Paulo	\$186.86	\$20.57	\$47.22	\$254.64	3.9	980.36
49	Seoul	\$124.03	\$38.46	\$123.14	\$285.63	1157.4	330,582.45
21	Shanghai	\$201.62	\$24.61	\$136.69	\$362.92	6.4	2,553.82
40	Shenzhen	\$174.17	\$22.50	\$104.69	\$301.36	6.4	1,925.69
46	Singapore	\$142.06	\$30.55	\$117.02	\$289.63	1.4	405.48
48	St. Petersburg	\$208.25	\$19.93	\$58.70	\$286.89	66.6	19,092.53
14	Stavanger	\$239.34	\$57.60	\$116.99	\$413.94	8.6	3,572.30
23	Stockholm	\$193.80	\$45.42	\$119.79	\$359.01	8.7	3,116.21
76	Stuttgart	\$118.12	\$42.12	\$77.15	\$237.38	0.9	223.14
34	Sydney	\$192.82	\$28.80	\$97.66	\$319.28	0.7	233.07
24	Taipei	\$212.30	\$32.55	\$97.81	\$342.66	32.7	1,1191.28
12	Tel Aviv	\$294.65	\$49.61	\$95.60	\$439.86	3.9	1,702.26
91	Tianjin	\$103.59	\$13.67	\$87.81	\$205.07	6.4	1,310.40
10	Tokyo	\$225.36	\$121.16	\$107.03	\$453.55	122.9	55,745.83
58	Toronto	\$138.26	\$44.62	\$79.72	\$262.61	1.3	351.90
66	Vancouver	\$141.87	\$29.49	\$80.56	\$251.92	1.3	337.57
52	Vienna	\$152.45	\$43.46	\$82.20	\$278.11	0.9	261.42
93	Warsaw	\$114.40	\$14.91	\$70.04	\$199.35	4.0	803.38
5	Zurich	\$281.25	\$52.00	\$151.21	\$484.46	1.0	498.99

\*One taxi from the main airport to the city center, one taxi from the main train or bus station to the city center and a 33-centileter bottle of Evian water or its equivalent at the airport



# NON-U.S. FOOD COST BREAKDOWN

KEY:  Americas  EMEA  Asia/Pacific

Rank	City	Breakfast*	Lunch**	Dinner***	Total	Year-over-Year Change****
1	Caracas	\$339.82	\$285.50	\$501.76	\$1,127.07	165.2%
2	Basel	\$29.77	\$58.96	\$70.71	\$159.45	45.0%
3	Abu Dhabi	\$35.06	\$48.37	\$71.25	\$154.68	5.9%
4	Zurich	\$33.66	\$48.87	\$68.69	\$151.21	7.2%
5	Geneva	\$33.17	\$63.66	\$54.37	\$151.20	7.2%
6	Doha	\$26.10	\$35.71	\$82.01	\$143.82	8.1%
7	Shanghai	\$27.55	\$37.67	\$71.47	\$136.69	-29.9%
8	London	\$37.34	\$45.93	\$51.74	\$135.01	-9.4%
9	Dubai	\$32.56	\$40.19	\$59.60	\$132.36	10.3%
10	Riyadh	\$32.62	\$49.47	\$50.09	\$132.18	4.1%
11	Hong Kong	\$31.02	\$45.28	\$53.80	\$130.10	-28.9%
12	Beijing	\$22.06	\$40.59	\$61.04	\$123.68	-24.6%
13	Seoul	\$36.30	\$52.63	\$34.21	\$123.14	-3.8%
14	Muscat	\$34.02	\$43.97	\$42.67	\$120.66	-1.9%
15	Stockholm	\$22.19	\$40.08	\$57.52	\$119.79	6.0%
16	Singapore	\$23.94	\$34.34	\$58.75	\$117.02	-7.1%
17	Stavanger	\$24.56	\$41.28	\$51.15	\$116.99	-10.7%
18	Oslo	\$25.92	\$44.64	\$45.60	\$116.17	-9.9%
19	Kuwait City	\$24.27	\$42.17	\$49.25	\$115.68	21.8%
20	Helsinki	\$25.00	\$47.62	\$40.02	\$112.65	-15.3%
20	Paris	\$28.63	\$35.42	\$48.36	\$112.41	-27.9%
22	Antwerp	\$20.21	\$31.56	\$57.27	\$109.04	-7.6%
23	Tokyo	\$25.16	\$35.19	\$46.68	\$107.03	-29.6%
24	Copenhagen	\$23.79	\$38.26	\$43.82	\$105.87	-23.3%
25	Shenzhen	\$22.33	\$39.04	\$43.32	\$104.69	-8.2%
25	The Hague	\$23.05	\$34.22	\$46.72	\$103.99	-6.3%
27	Frankfurt	\$23.49	\$34.10	\$44.75	\$102.34	10.0%
28	Lagos	\$24.59	\$35.49	\$40.75	\$100.83	-12.3%
29	Munich	\$26.95	\$30.35	\$42.30	\$99.61	-17.7%
30	Taipei	\$21.64	\$35.23	\$40.94	\$97.81	-0.2%
31	Amsterdam	\$26.14	\$29.02	\$42.64	\$97.81	-36.1%
32	Sydney	\$21.67	\$32.07	\$43.91	\$97.66	-15.8%
33	Dusseldorf	\$29.43	\$33.24	\$34.95	\$97.62	-13.6%
34	<b>Average Total</b>	<b>\$24.52</b>	<b>\$31.33</b>	<b>\$41.46</b>	<b>\$97.31</b>	<b>-15.5%</b>
35	Tel Aviv	\$28.95	\$33.23	\$33.42	\$95.60	-2.5%
36	Berlin	\$31.38	\$29.01	\$34.78	\$95.17	-24.5%
37	Edinburgh	\$24.19	\$29.90	\$40.46	\$94.55	-5.4%
37	Glasgow	\$22.26	\$27.18	\$44.22	\$93.65	-7.3%
39	Barcelona	\$24.56	\$27.35	\$41.32	\$93.22	-28.3%
39	Rome	\$28.84	\$32.13	\$32.18	\$93.15	-31.0%
41	Bratislava	\$25.51	\$22.34	\$45.19	\$93.04	-12.2%
41	Athens	\$24.52	\$32.72	\$35.76	\$93.00	-19.1%
41	Birmingham	\$23.68	\$32.11	\$36.65	\$92.44	-11.1%
41	Prague	\$17.85	\$22.30	\$51.65	\$91.81	-15.8%
45	Luxembourg	\$22.87	\$26.68	\$41.67	\$91.22	-22.7%
46	Rotterdam	\$25.18	\$36.26	\$29.34	\$90.78	-24.3%
46	Lisbon	\$26.06	\$30.67	\$33.51	\$90.25	-25.4%
46	Cologne	\$21.81	\$31.56	\$36.79	\$90.16	-14.1%
46	Brussels	\$23.40	\$25.32	\$41.13	\$89.86	-37.2%
50	Tianjin	\$17.92	\$29.10	\$40.79	\$87.81	-26.2%
50	Calgary	\$195	\$28.82	\$40.60	\$85.96	-9.5%

Rank	City	Breakfast*	Lunch**	Dinner***	Total	Year-over-Year Change****
51	Auckland	\$20.50	\$28.48	\$36.63	\$85.61	-23.6%
52	Nice	\$22.84	\$31.03	\$31.01	\$84.88	-22.1%
53	Hamburg	\$23.58	\$28.17	\$31.89	\$83.65	-18.0%
54	Istanbul	\$26.05	\$26.47	\$30.28	\$82.80	-25.4%
55	Milan	\$28.72	\$21.70	\$32.27	\$82.70	-33.3%
56	Vienna	\$26.51	\$23.21	\$32.48	\$82.20	-21.0%
57	Manchester	\$22.05	\$24.41	\$35.67	\$82.12	-8.8%
58	Vancouver	\$13.16	\$25.56	\$41.84	\$80.56	-17.0%
59	Toronto	\$15.01	\$26.62	\$38.10	\$79.72	-22.6%
60	Buenos Aires	\$23.29	\$17.43	\$38.07	\$78.79	-27.7%
61	Moscow	\$22.62	\$31.05	\$24.83	\$78.50	-23.0%
62	Stuttgart	\$22.12	\$25.03	\$30.00	\$77.15	-14.3%
63	Osaka-Kobe	\$15.82	\$23.08	\$36.93	\$75.84	-12.8%
64	Guangzhou	\$20.82	\$29.04	\$25.00	\$74.86	-24.4%
65	Kuala Lumpur	\$12.37	\$24.19	\$37.37	\$73.94	-10.9%
66	Bangkok	\$19.28	\$22.53	\$32.10	\$73.91	-6.4%
67	Lyon	\$19.95	\$25.44	\$28.14	\$73.53	-33.2%
68	Melbourne	\$18.37	\$19.47	\$35.37	\$73.22	-29.6%
69	Ottawa	\$14.54	\$24.31	\$33.83	\$72.68	-16.5%
70	Dublin	\$16.56	\$23.47	\$31.01	\$71.04	-29.7%
71	Warsaw	\$15.72	\$25.39	\$28.93	\$70.04	-14.6%
72	Grenoble	\$9.82	\$20.87	\$36.52	\$67.22	-16.0%
73	Bucharest	\$17.97	\$25.18	\$23.56	\$66.71	-12.2%
74	Mexico City	\$14.20	\$18.33	\$33.30	\$65.83	-11.0%
75	Nairobi	\$23.44	\$21.57	\$20.70	\$65.72	-23.6%
76	New Delhi	\$12.39	\$22.16	\$30.65	\$65.20	-14.2%
77	Madrid	\$18.74	\$18.02	\$28.15	\$64.92	-43.1%
78	San Juan	\$14.91	\$19.22	\$30.04	\$64.17	-25.4%
79	Budapest	\$18.14	\$24.36	\$19.65	\$62.15	-24.2%
80	Montreal	\$15.41	\$17.98	\$28.26	\$61.65	-34.4%
81	Jakarta	\$14.81	\$19.76	\$25.99	\$60.56	-6.8%
82	Mumbai	\$14.75	\$25.45	\$19.89	\$60.09	-10.3%
83	Hanoi	\$16.72	\$23.31	\$19.49	\$59.51	-11.2%
84	Manila	\$15.60	\$22.12	\$21.49	\$59.22	-16.6%
85	St. Petersburg	\$14.26	\$23.93	\$20.51	\$58.70	-20.7%
86	Cairo	\$16.79	\$23.87	\$16.88	\$57.55	-8.7%
87	Santiago	\$15.25	\$15.14	\$22.13	\$52.52	-39.6%
88	Rio de Janeiro	\$17.31	\$13.57	\$21.56	\$52.44	-47.0%
89	Quito	\$13.42	\$15.33	\$22.33	\$51.08	-24.9%
90	Kiev	\$14.87	\$20.29	\$15.67	\$50.84	-26.3%
91	Panama City	\$14.67	\$14.50	\$19.00	\$48.17	-28.1%
92	San Jose	\$11.52	\$16.34	\$19.72	\$47.58	-29.0%
93	Sao Paulo	\$15.19	\$11.20	\$20.82	\$47.22	-49.2%
94	Lima	\$11.65	\$11.65	\$22.75	\$46.04	-38.6%
95	San Salvador	\$8.73	\$14.02	\$22.08	\$44.83	-22.7%
96	Guatemala City	\$12.18	\$12.67	\$19.70	\$44.55	-29.3%
97	Cape Town	\$9.37	\$14.23	\$20.06	\$43.65	-27.2%
98	Bangalore	\$10.99	\$12.23	\$16.01	\$39.23	-23.1%
99	Johannesburg	\$11.35	\$13.23	\$11.54	\$36.12	-29.2%
100	Bogota	\$8.40	\$9.50	\$13.76	\$31.66	-53.4%

\*Continental hotel breakfast \*\*Sandwich, salad and nonalcoholic drink \*\*\*Salad, nonalcoholic drink and fish, chicken or beef. No gratuity or tax is included. \*\*\*\* The year-over-year change is based on 2015 figures rounded to whole dollars.

# PREMIUM SERVICE THAT'S ALL BUSINESS.

Trust Africa's most awarded airline to go the extra mile to let you work or relax in ultimate comfort. With connections from over 30 North American cities to 65 African destinations, our daily flights feature a Premium Business Class service with fully-flat seats for a good rest, gourmet cuisine, award-winning South African wines and a selection of on-demand entertainment. Let us make your business our pleasure.



[www.flysaa.com](http://www.flysaa.com) • 1-800-722-9675  
or your professional travel consultant



**SOUTH AFRICAN AIRWAYS**

A STAR ALLIANCE MEMBER 

# A BUSINESS RENTAL SOLUTION THAT RAISES THE BAR.

With a business rental solution from Enterprise, you can experience the speed, choice, service and reach of one of the industry's leaders – making your company's travel program more efficient while giving your business travelers more options.

And Enterprise Rent-A-Car is ranked “Highest in Rental Car Customer Satisfaction” by J.D. Power.



Visit [www.drivealliance.com/BTN](http://www.drivealliance.com/BTN)  
or call **1-877-439-4504** to learn more.



Enterprise received the highest numerical score among 8 rental car companies in the proprietary J.D. Power 2015 Rental Car Satisfaction Study<sup>SM</sup>. Study based on 12,101 responses, measuring opinions of business and leisure travelers who rented a vehicle at an airport location. Proprietary study results are based on experiences and perceptions of surveyed in September 2014-August 2015. Your experiences may vary. Visit [jdpower.com](http://jdpower.com).

Enterprise Rent-A-Car, Enterprise and the "e" logo are registered trademarks of Enterprise Holdings, Inc. All other trademarks marks are the property of their respective owners © 2016 Enterprise Holdings, Inc. G05177 03.16